

PRESSURE KING

Pressure Washers & Steamers Sales and Service



LEAVE THE BEST FIRST IMPRESSION

Innovative and efficient cleaning solutions for the transportation industry



DESIGNED TO KEEP YOUR FLEET RUNNING.

The trucking industry is diverse with endless cleaning applications and unique cleaning needs. We have the right solutions to help you care for your assets. Kärcher provides solutions to maintain the interior and exterior of your truck and trailer, tidy up fuel stations, keep parking lots free of debris, manage cleaning at a service and repair center, and make clean up quicker and more efficient. We aim to take the guesswork out of cleaning, so your equipment will last for years to come.



- 4 Service
- 6 Trailers
- 7 Cab
- 8 Service Shops
- 9 Fuel Stations & Parking Lots
- 10 Product Recommendations

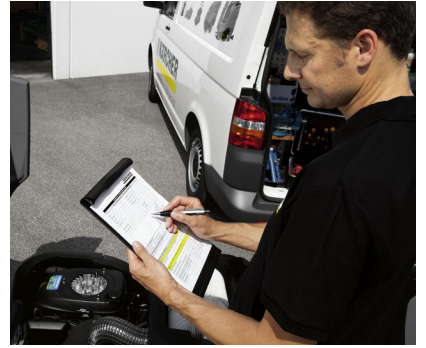
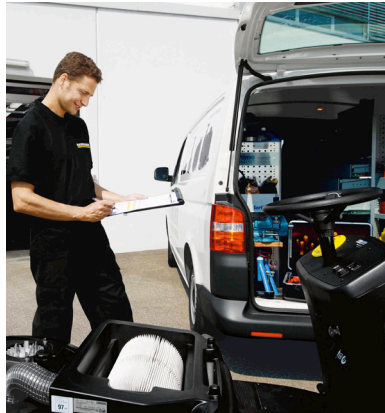


Kärcher Service

- On-site repairs
- Preventative maintenance
- Training and installation

Going the distance

Know your machinery. We provide training and installation for your new equipment purchases.



Proactive maintenance

Schedule regular inspections with our packaged solutions and avoid costly, unplanned equipment servicing.

Successful operation

Increase operator and customer safety with equipment that is reliable and will leave your floors clean and dry.



We are here for you

We offer friendly, local service with nationwide coverage that includes same-day and next-day service. Utilize Kärcher Service to quickly fix equipment that is down.

Stay connected

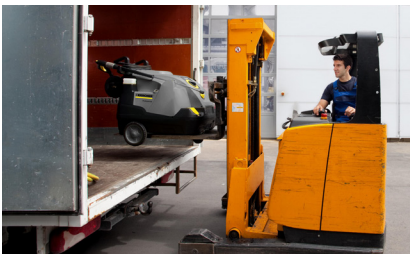
For a simple way to manage your assets, take advantage of Kärcher Service's web portal. You can request service, enter service requests, track open calls and receive historical information all at the click of a button.

TRAILERS



Due to the recent FSMA regulations, sweeping or washing out your trailer between loads is now mandatory. Kärcher has the tools you need to comply with this FDA act to keep you and your load safe.

Use the KM 70/30 sweeper to quickly clean up dirt and debris from an enclosed trailer. It includes a flat pleated filter for dustless sweeping and can hold up to 11 gallons of debris. VitalOxide detergent is a no rinse sanitizer for food contact surfaces. It kills harmful bacteria, mold and mildew, eliminates allergens, and deodorizes upon contact.



Kärcher's HDS Special Class hot water pressure washer should be used anytime you need to disinfect or remove grime from a special application or agricultural trailer. The HD Super Class cold water pressure washer can easily blast away dirt, grease, and grime from any trailer. The trigger gun is ergonomic, efficient, and easy to use.



KM 70/30 C Bp Adv Sweeper

HDS-E 3.3/25-4M Ec Pressure Washer

HD 4.5/32-4S Ec Pressure Washer

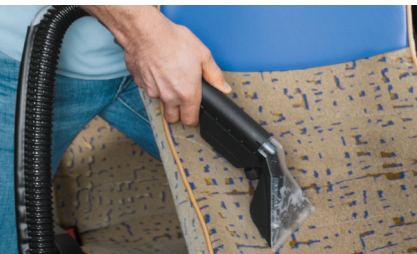
VitalOxide Detergent

CAB



Whether you're traveling over the road or you make local deliveries, your cab is your home away from home. Remove stains from carpets, seats, and mats, clean up wet or dry spills, and remove grime and fingerprints from your dash & windows with ease.

Kärcher makes it easier than ever to extract set in stains in carpets and upholstery in your truck cab with the Puzzi 8/1 C. Our CarpetExpert RM 760 tablet detergent can be added to any extractor to leave your seats, headliners, and upholstery smelling fresh while repelling future stains and spills.



Vacuum up dirt, mud, and debris easily with the NT 48/1 wet/dry vacuum. Use the SG 4/4 steam cleaner to clean dust from vents and your dash, fingerprints and smudges from windows, and remove odors from set in spills or stains.



RM 760 Tablet *Detergent*

Puzzi 8/1 C *Extractor*

NT 48/1 *Wet/Dry Vacuum*

SG 4/4 *Steam Cleaner*

SERVICE SHOPS



We know that a service center is not easy to keep clean. Simple, powerful, and compact equipment allows for a faster and more efficient turn-around time between trucks.

Gear oil, engine oil, fuel, and hydraulic fluid are frequently spilled or splashed on your service center floor. Use the HDS Stationary hot water pressure washer to remove spills and debris between services. The KM 75/40 sweeper can efficiently and quickly remove everything from fine dust to large debris and is simple to operate.



For repairs, consider a Cuda 2412 Top Load parts washer, which easily washes engine parts and components. It's safe, fast, and uses no solvents. Kärcher's Shop Floor Cleaner detergent removes set-in stains from your shop floors.



KM 75/40 Sweeper

2412 Top Load Parts Washer

HDS 3.5/23 Eg ST NG Pressure Washer

Shop Floor Cleaner Detergent

FUEL STATIONS & PARKING LOTS



Routine cleaning of fuel bays, parking areas, and protective awnings at truck stops require extra effort because of their size. Our fleet of cleaning equipment can handle every task you come across.

Fuel spills should be cleaned up quickly, to prevent slip and falls or fire. The TRK-2500 trailer pressure washer can be quickly moved into place to spray away debris, spills, and clean off pumps and handles. Kärcher's Concrete Cleaner detergent removes stains and helps keep the concrete in good condition.



Use the lightweight SG1 C Bp gum remover to blast away gum stains. This easy-to-use backpack model makes clean-up quick and efficient. Kärcher's KM 105/110 R Bp sweeper includes front-wheel steering, making this powerful machine incredibly maneuverable. The waste container can hold up to 29 gallons, so you can clean until the job is done.



KM 105/110 R Bp Sweeper

TRK-2500 HDS 4.7/35 Pressure Washer

SG1 C Bp Gum Remover

Concrete Cleaner Detergent

Cleaning Need	Extractors	Vacuums	Sweepers
Trailers			
<p>Wash trailers both inside and out with our extensive line of hot and cold water pressure washers and detergents to keep your rig looking perfect.</p>		<p>NT 48/1 NT 65/2 NT 68/1</p>	<p>KM 70/30 C Bp Adv</p>
Cab Interior			
<p>Detail the inside of your cab with steam cleaners, suck up dirt & debris with wet/dry vacuums, and spot clean with an extractor for that extra tidy look.</p>	<p>Puzzi 8/1 C</p>	<p>NT 48/1 NT 65/2 NT 68/1</p>	
Service Shops			
<p>Remove debris with a wet/dry vacuum or sweeper, clean all surfaces with a hot or cold pressure washer, wash parts with a Cuda parts washer, and keep floors free of dirt with a top-of-the-line sweeper.</p>		<p>NT 48/1 NT 65/2 NT 68/1</p>	<p>KM 75/40 W Bp KM 90/60 R Bp Adv</p>
Fuel Stations & Parking Lots			
<p>Clean parking lots and fuel station bays with ease. Power wash pumps and handles, sweep debris from sidewalks and parking lots & use our line of detergents to help remove stains.</p>		<p>NT 48/1 NT 65/2 NT 68/1</p>	<p>KM 75/40 W Bp KM 90/60 R Bp Adv KM 105/110 R Bp KM 125/130 R Bp</p>

Pressure Washers

Specialty Equipment

Detergents

HDS E 3.3/25-4M Ec
HDS 3.5/20 Ea Cage
HD 4.5/32-4S Ec
HD 3.7/35 PB Cage
HD 2.3/24 P

Foamer
Truck Brushes
Tractor Brushes
FRV 30

VitalOxide
Fleet Wash Detergent
Heavy Equipment Detergent
Fleet Wash Solvent
Fleet Trailer Cleaner
Fleet Degreaser
Vehicle Wash & Wax Detergent
Vehicle Pre-Soak
Vehicle Wheel and Tire Cleaner
Salt & Ice Melt

SG 4/4
SGV 6/5

CarpetExpert RM 769
CarpetExpert RM 760
Universal Spotter & Stain Remover

HDS 3.5/23 Eg ST NG

CUDA 2412 Parts Washer
SG 4/4
SGV 6/5
Airmover 3
Windhandler 3

Neutral Floor Cleaner
Shop Floor Cleaner
Warehouse Floor Cleaner

TRK-2500 HDS 4.7/35
HDS 5.6/35 Pe Cage
HDS 3.5/35 Pe Cage
HDS 5.0/30-4S Eb
HDS 4.5/22-4M Ea
HD 1.8/13 C
HD 3.0/20 C Ea
HD 4.0/40 Ge

SG1 C Bp
SG2 C Bp
A+ Surface Cleaner SC21

Concrete Cleaner
Industrial Oil & Grease Remover
Heavy Duty Degreaser