



PRESSURE KING

PRESSURE WASHERS

Professional Pressure Washers,
Genuine Kärcher Parts,
Pressure Washer Parts,
Accessories & Detergents



VALUE ADDED ICONS

Throughout the following pages, look for these icons displayed with each Kärcher machine. Find out what makes our professional cleaning equipment some of the most innovative and sought after equipment in the industry.



Tested by a Nationally Recognized Testing Laboratory (NRTL) and meets safety standards.



Puncture proof, flat free tires.



Many Kärcher German machines can be operated using environmentally friendly biodiesel.



Economical and environmental mode for reducing energy consumption while still offering optimal cleaning performance.



International (Canadian Standards Association) tests and certifies electrical, mechanical, plumbing and gas of products.



Trigger gun uses the recoil force of the high-pressure spray to reduce the hold force of the trigger to zero.



Two-way dosing valve for switching between different detergents and for precise and variable cleaning agent dosing.



Many Kärcher North American models come with a Honda Engine.



Most Kärcher pumps come with a 7-year warranty, wear parts excluded.



Quick lock screw connection for pressure washers and accessories.



Pressure and water flow regulation directly at the gun.



Leadership in Energy and Environmental Design and is widely used green building rating system.



Electric start of motor for convenience of easier and faster start-up.



Automatically shuts down the motor and pump when the trigger gun is released.



Complies with Environmental laws.



National Association of Trailer Manufacturers that provides applicable Federal Motor Vehicle Safety Standards for members.



Lithium Ion battery offering a longer life than other batteries, consistent voltage, and energy charging savings.



Easy Operation dial provides self-explanatory symbols to identify cleaning modes.



FACT - Flexible Application Control Technology allows adjustment of brush speed for different applications.



FLEET management system monitors vital functions of a machine and sends updates electronically.



Max Stock Symbol denotes items with fast shipping available. We strive to keep popular items stocked & available at all times.

HDS UPRIGHT CLASS



Mobility at its finest.

This high-performance, robust upright machine offers outstanding maneuverability, easy transport and intuitive operation. Ideal for tradesmen, commercial use and contract cleaners.



Features

- Effortless transport over landings or stairs and space saving storage
- Large, flat-free tires for unpaved surfaces
- Large fine mesh filter reliably protects against dirt particle damage
- Easy!Force gun with cruise control like technology - uses its own recoil force to hold the trigger down – so no more sore hands after hours of use

TECHNICAL DATA

Model	Part No.	GPM	PSI	Drive	HP	Electrical	Amps	Pump	Ship Weight (lbs)	Ship Dimensions (L x W x H) Inches
HDS 1.7/12 U Ed	1.064-907.0	1.7	1200	Direct	2.3	110-120V / 1ph	12.5	Kärcher Axial	178	28 x 28 x 46

ACCESSORIES

Order No.	Description
■ 4.118-005.0	■ EASY!Force trigger gun (German model) - zero force required.
■ 4.112-006.0	■ 33" spray lance
■ 6.110-034.0	■ 33' high-pressure hose
■ 4.117-027.0	■ Triple jet nozzle, 032
□ 2.112-015.0	■ Gutter cleaning lance
□ 4.112-032.0	■ Underbody lance
□ 6.110-051.0	■ High-pressure hose, 33', 10m DN8, suitable for food industry, extension piece
□ 6.110-049.0	■ Pipe cleaning hose
□ 2.111-013.0	■ FR 30 ME surface cleaner
□ 2.111-011.0	■ Surface cleaner FR 30
□ 4.115-000.0	■ Wet blasting attachment
□ 4.113-003.0	■ Rotating washing brush natural fiber bristles
□ 4.113-004.0	■ Rotating washing brush nylon bristles
□ 2.113-000.0	■ Power nozzle 25° spray angle
□ 4.114-019.0	■ Dirtblaster Nozzle 035
□ 4.637-033.0	■ Detergent injector for high pressure
□ 2.115-000.0	■ Quick coupling
□ 2.115-001.0	■ Plug nipple
□ 4.112-000.0	■ 41" Spray lance

■ Included □ Optional ■ Compatible with EASY!Lock

MOJAVE SERIES



Premium model pictured

Robust and innovative.

The new Kärcher Mojave series is the perfect all-around machine for a variety of applications and target groups, including agriculture, automotive and transportation industries. The machines deliver the highest performance for best cleaning results - all combined in a robust package. The components include unique features in the market and combine it with high quality components engineered for a high product lifetime.



New, innovative, features and upgrades

- Standard auto start/stop
- Equipped with EASY!Force accessories, hour meter, status LED, crane hook, and other upgraded features
- Steam stage, Servo Control, and stainless steel side panels included on Premium units

TECHNICAL DATA

Model	Part No.	GPM	PSI	Motor	Electrical	Amps	Steam Mode	Pressure Adjustment	Ship Weight (lbs)	Ship Dimensions (L x W x H) Inches
HDS 3.0/20-4 Ea/Eg Standard	1.109-153.0	3.0	2000	4-pole	208-230V / 1ph	26	No	At unloader	507	50 x 40 x 50
HDS 3.5/30-4 Ea Standard	1.109-155.0	3.5	3000	4-pole	230V / 1ph	35	No	At unloader	507	50 x 40 x 50
HDS 4.0/20-4 Ea Premium	1.109-157.0	4.0	2000	4-pole	230V / 1ph	30	Yes	Servo Control	550	50 x 40 x 50
HDS 4.0/20-4 Eh/Eb Premium	1.109-158.0	4.0	2000	4-pole	208-230V / 3ph	24	Yes	Servo Control	550	50 x 40 x 50
HDS 4.0/20-4 Ec Premium	1.109-159.0	4.0	2000	4-pole	460V / 3ph	12	Yes	Servo Control	550	50 x 40 x 50
HDS 4.0/30-4 Eh/Eb Premium	1.109-163.0	4.0	3000	4-pole	208-230V / 3ph	30	Yes	Servo Control	550	50 x 40 x 50
HDS 4.0/30-4 Ec Premium	1.109-164.0	4.0	3000	4-pole	460V / 3ph	14	Yes	Servo Control	550	50 x 40 x 50
HDS 4.0/30-4 Ef Premium	1.109-165.0	4.0	3000	4-pole	575V / 3ph	12	Yes	Servo Control	550	50 x 40 x 50
HDS 5.0/30-4 Eh/Eb Premium	1.109-166.0	5.0	3000	4-pole	208-230V / 3ph	34	Yes	Servo Control	550	50 x 40 x 50
HDS 5.0/30-4 Ec Premium	1.109-167.0	5.0	3000	4-pole	460V / 3ph	16	Yes	Servo Control	550	50 x 40 x 50
HDS 5.0/30-4 Ef Premium	1.109-168.0	5.0	3000	4-pole	575V / 3ph	13	Yes	Servo Control	550	50 x 40 x 50

ACCESSORIES

Order No.	Description
■ 4.118-005.0 ■	EASY!Force trigger gun (German model) - zero force required
■ 4.112-000.0 ■	41" spray lance
■ 6.110-029.0 ■	50' EASY!Lock Longlife hose with ANTI!Twist connection (included on premium units)
■ 6.110-030.0 ■	50' EASY!Lock hose with ANTI!Twist connection (included on standard units)
■ 2.113-007.0 ■	Power nozzle 25042 for HDS 3.0/20-4 Ea/Eg
■ 2.113-021.0 ■	Power nozzle 25040 for HDS 3.5/30-4 Ea
■ 4.115-020.0 ■	Power nozzle 25058 for HDS 4.0/20-4 Ea Premium
■ 2.114-008.0 ■	Steam nozzle (included on HDS 4.0/20-4 Ea)
■ 4.118-008.0 ■	Servo Control dial (included on HDS 4.0/20-4 Ea)
□ 8.750-685.0	100' pivot reel
□ 9.808-276.0	Hose reel bracket kit (hose reel not included)

■ Included □ Optional ■ Compatible with EASY!Lock

HDS SUPER CLASS



Full-size power.

Super class hot water pressure washers offer optimum cleaning performance, easy handling and the latest technology.



Features

- Service switch offers a choice of five settings to suit local water hardness. This allows optimum metered quantities of anti-scaler and corrosion inhibitor to be added to the water supply, and prevents the buildup of lime scale on the heater coil. Operating data can be called up any time, allowing you to make continual adjustments
- Kärcher burner technology not only translates to more economical operation, but also makes our hot water pressure washers trendsetters in environmental protection thanks to their low emissions and highly efficient operation

TECHNICAL DATA

Model	Part No.	GPM	PSI	Drive	HP	Electrical	Amps	Pump	Ship Weight (lbs)	Ship Dimensions (L x W x H) Inches
HDS 5.0/30-4S Eb	1.071-919.0	2.4-5.0	460-3000	Direct	11	208-240V / 3ph	27	Kärcher Axial	516	51 x 32 x 45
HDS 5.0/30-4S Ec	1.071-920.0	2.4-5.0	460-3000	Direct	11	460-480V / 3ph	15	Kärcher Axial	516	51 x 32 x 45

ACCESSORIES

Order No.	Description
■ 4.118-005.0 ■	EASY!Force trigger gun (German model) - zero force required.
■ 4.112-000.0 ■	41" spray lance
■ 6.110-029.0 ■	50' EASY!Lock Longlife hose with ANTI!Twist connection
■ 2.113-012.0 ■	Power nozzle, 062
□ 4.111-041.0 ■	Adapter for EASY!Force trigger gun connecting to 3/8" hose
□ 4.118-009.0 ■	Servo control
□ 8.750-685.0	100' pivot reel
□ 8.921-775.0	Hose reel bracket (complete with Easy!Lock adapter, street elbow and 6' jumper hose)
■ Included □ Optional ■ Compatible with EASY!Lock	

HDS SPECIAL CLASS



The zero emission specialist.

The emission-free HDS-E 3.3/25-4M Ec with electric heater is ideal where exhaust gases are undesirable or prohibited. Thanks to the unique type of heater insulation and Kärcher ecoefficiency mode, the HDS-E 3.3/25-4M Ec is efficient and eco-friendly. Models are ETL certified to UL & CSA safety standards.



Features

- ecoefficiency mode – economical and environmentally friendly, even during longer periods of use
- Intuitive operation with large single-button selector dial

TECHNICAL DATA

Model	Part No.	GPM	PSI	Drive	HP	Electrical	Amps	Pump	Ship Weight (lbs)	Ship Dimensions (L x W x H) Inches
HDS-E 3.3/25-4M Ec	1.030-902.0	1.6-3.3	465-2520	Direct	7.5	460V / 3ph	35	Kärcher Axial	290	50 x 32 x 45
HDS-E 3.3/25-4M Ef	1.030-903.0	1.6-3.3	465-2520	Direct	7.5	575V / 3ph	28	Kärcher Axial	352	50 x 32 x 45

ACCESSORIES

Order No.	Description
■ 4.118-005.0	■ EASY!Force trigger gun (German model) - zero force required.
■ 4.112-000.0	■ 41" spray lance
■ 6.110-030.0	■ 50' EASY!Lock Longlife hose with ANTI!Twist connection
■ 2.113-009.0	■ Power nozzle, TR 25047
□ 2.111-013.0	■ Surface cleaner, FR 30 ME
□ 4.111-037.0	■ Coupler
□ 4.118-007.0	■ Servo Control
□ 4.111-036.0	■ Adapter for EASY!Lock lance connecting to M18 Dirtblaster nozzle
□ 4.111-041.0	■ Adapter for EASY!Lock gun connecting to 3/8" hose
□ 8.750-685.0	100' pivot reel
□ 8.921-775.0	Hose reel bracket (complete with Easy!Lock adapter, street elbow and 6' jumper hose)

■ Included □ Optional ■ Compatible with EASY!Lock

HDS CABINET



Cleaning technology for indoors.

This Kärcher all-electric hot water pressure washer introduces hot-water tank technology to deliver hot water on demand ideal for indoor cleaning. Water is heated by flowing through a coil inside an 80-gallon water tank. Heating elements generate 138,000 BTU to produce hot water of up to 180°F. All models are ETL and CSA certified.



Features

- Heavy-duty, steel cabinets are protected by an epoxy powder coat finish; upper cabinet ventilated for cool operation
- Thermal pump saver valve prevents damage by venting recirculated water
- Low-water flow switch prevents damage to heating elements due to lack of water
- Easy-to-attach detergent injector and three quick couplers nozzles
- Auto start function allows unit to be turned on with pull of the trigger
- EASY!Force gun with cruise control like technology - uses its own recoil force to hold the trigger down - so, no more sore hands after hours of use

TECHNICAL DATA

Model	Part No.	GPM	PSI	Drive	HP	Electrical	Amps	Pump	Ship Weight (lbs)	Ship Dimensions (L x W x H) Inches
HDS 4.0/20 E Ec	1.109-075.0	4.2	2000	Belt	6.2	460V / 3ph	55	Kärcher KM	640	32 x 24 x 52
HDS 4.0/30 E Ec	1.109-076.0	3.5	3000	Belt	7.5	460V / 3ph	59	Kärcher KM	640	32 x 24 x 52
HDS 4.0/20 E Ef	1.109-956.0	3.5	2000	Belt	5	575V / 3ph	46	Kärcher KM	620	34 x 25 x 52
HDS 4.0/30 E Ef	1.109-957.0	3.5	3000	Belt	7.5	575V / 3ph	49	Kärcher KM	640	34 x 25 x 52

ACCESSORIES

Order No.	Description
■ 8.756-481.0 ■	EASY!Force trigger gun (North American Model) - zero force required. Standard 1/4" connection for wand, 3/8" connection for hose.

OPTIONS (FACTORY INSTALLED)

Order No.	Description
<input type="checkbox"/> 8.925-520.0	Time delay shutdown (replaces auto start-stop) (only for 460V units)
<input type="checkbox"/> 9.801-002.0	Pressure washer stainless steel cabinet (only for 460V units)

■ Included Optional ■ Please Note: NOT compatible with EASY!Lock

TABERNAS SERIES



Innovation inside and out.

The innovative, rugged design of the Kärcher Classic HDS natural gas and LP-heated cabinet pressure washer delivers up to 5 gpm at 3,000 psi of industrial power. Built in the U.S.A., each model is constructed with anodized structural rivets, a water cooled electric motor, standard auto start/stop and Kärcher's axial direct-drive pump backed by a 7-year warranty. All models are ETL certified to UL and CSA safety standards.



Features

- Integrated RM 110 reservoir and steam stage
- Inlet/outlet connections can be moved to either side of the unit
- Auto start-stop for on-demand cleaning
- EASY!Force gun with cruise control like technology - uses its own recoil force to hold the trigger down
- "Stay-in-Place" ignition pilot light with swing out burner ring
- Cool wall cabinet construction and pulsation damper

TECHNICAL DATA

Model	Part No.	GPM	PSI	Drive	HP	Electrical	Amps	Pump	Ship Weight (lbs)	BTU	Ship Dimensions (L x W x H) Inches
Natural Gas											
HDS 3.5/23 Eg ST NG	1.109-797.0	3.5	2300	Direct	8.1	208V / 1ph	26	Kärcher Axial / 1725	695	310000	49 x 24 x 48
HDS 4.5/22 Ea ST NG	1.109-722.0	4.5	2200	Direct	9.5	230V / 1ph	30	Kärcher Axial / 1725	695	393000	49 x 24 x 48
HDS 3.5/30 Ea ST NG	1.109-729.0	3.5	3000	Direct	9.5	230V / 1ph	27	Kärcher Axial / 1725	695	310000	49 x 24 x 48
HDS 5.0/30 Eb ST NG	1.109-742.0	5.0	3000	Direct	11	230V / 3ph	27	Kärcher Axial / 1725	700	398000	49 x 24 x 48
HDS 5.0/30 Ec ST NG	1.109-743.0	5.0	3000	Direct	11	460V / 3ph	19	Kärcher Axial / 1725	700	398000	49 x 24 x 48
LP Gas-Heated											
HDS 3.5/23 Eg ST LP	1.109-798.0	3.5	2300	Direct	8.1	208V / 1ph	26	Kärcher Axial / 1725	695	310000	49 x 24 x 48
HDS 4.5/22 Ea ST LP	1.109-763.0	4.5	2200	Direct	9.5	230V / 1ph	30	Kärcher Axial / 1725	695	393000	49 x 24 x 48
HDS 3.5/30 Ea ST LP	1.109-770.0	3.5	3000	Direct	9.5	230V / 1ph	27	Kärcher Axial / 1725	695	310000	49 x 24 x 48
HDS 5.0/30 Eb ST LP	1.109-783.0	5	3000	Direct	11	230V / 3ph	27	Kärcher Axial / 1725	700	398000	49 x 24 x 48
HDS 5.0/30 Ec ST LP	1.109-784.0	5	3000	Direct	11	460V / 3ph	19	Kärcher Axial / 1725	700	398000	49 x 24 x 48

ACCESSORIES

Order No.	Description
■ 4.118-005.0 ■	EASY!Force trigger gun (German model) - zero force required.
□ 2.744-008.0	Remote Kit single station
□ 6.685-195.0	Chemical solenoid valve (brass) for use with remote kit
□ 8.708-846.0	Chemical solenoid valve (stainless steel) for use with remote kit
□ 9.801-040.0	Draft diverter, 10"
□ 8.753-474.0	Damper, draft 10"
□ 8.925-154.0	Hose 3/8" x 50', 4000 PSI
□ 6.392-106.0	Self-winding hose reel, 66'
□ 2.639-931.0	Swivel wall mount bracket
□ 8.923-213.0	Hot water discharge outlet relocation

■ Included □ Optional ■ Compatible with EASY!Lock

SECHURA SERIES



High cleaning performance.

The North American Kärcher HDS natural gas and LP-heated cabinet pressure washer delivers up to 9.5 gpm at 3000 psi of industrial power. Built in the U.S.A., each model is constructed with anodized structural rivets, industrial motors and Kärcher pumps that are backed by a 7-year warranty.



Features

- All-access cabinet design with six lift out panels and easy lock fasteners provides easy access to components for maintenance in tight situations
- Swing-out cast iron burner ring with separate “stay-in-place” ignition pilot light allows easy access and removal of the burner ring
- Improved “Stay-Tite” belt tensioning system maintains belt tension on the pump with a torsion bar for precise tension adjustment
- The heating coil is made of leak-free, cold rolled, schedule 80 steel pipe and is wrapped with a thick foil blanket insulation that keeps cabinet walls cool to the touch
- EASY!Force gun with cruise control like technology - uses its own recoil force to hold the trigger down - so, no more sore hands after hours of use

ACCESSORIES

Order No.	Description
■ 4.118-005.0 ■	EASY!Force trigger gun (German model) - zero force required.
□ 8.917-509.0	Kit, wireless remote pump/burner/detergent
□ 8.921-832.0	Wireless hand-held transmitter
□ 8.917-817.0	Kit, wall bracket wireless transmitter
□ 8.921-774.0	NG kit, wired remote station - pump and burner (note: cord length is 20 ft)
□ 8.921-773.0	NG kit, wired remote detergent
□ 8.922-157.0	Remote control box (wired) (Pump / burner switch Included, add 8.921-773.0 for detergent switch). For additional remote only.
□ 8.917-507.0	Snap-N-Go Auto Start/Stop Kit w/ Lock Out (no remote, or wireless remote)
□ 9.807-646.0	Snap-N-Go Auto Start/Stop Kit w/o Lock Out (wired remote, requires 8.921-774.0)
□ 8.917-508.0	Snap-N-Go Time Delay Kit
□ 8.921-776.0	Kit, steam combo
□ 9.801-040.0	Draft diverter, 10", up to 5 gpm
□ 8.717-730.0	Draft diverter, 12", over 5 gpm
□ 8.753-474.0	Draft damper, 10"
□ 8.753-478.0	Draft damper, 12"
□ 8.753-706.0	Reducer, stack 12" to 10"
□ 8.753-707.0	Reducer, stack 10" to 8"
□ 8.923-213.0	Outlet relocater

■ Included □ Optional ■ Compatible with EASY!Lock

HDS VHP



For dirt and grime indoors and out.

Looking for a heavy-duty pressure washer that can handle the dirt and grime indoors and out? Then the versatile VHP is the right machine for the task. Available in both 120V and 230V configurations, this hot water pressure washer features cleaning power up to 2.5 GPM and 2000 PSI. And, since the VHP is built with tubed pneumatic tires, this heavy-duty series delivers power wherever the job takes you. It is designed for vapor type propane only.



Features

- Belt-driven Kärcher pump with a 7-year warranty
- Four tubed pneumatic tires provide excellent maneuverability
- Extra-durable heating coil is made of leak-free, cold-rolled steel pipe and features a 5-year warranty
- Features a rugged 10 gauge steel chassis with polyester powder coat finish
- EASY!Force gun with cruise control like technology - uses its own recoil force to hold the trigger down - so, no more sore hands after hours of use

TECHNICAL DATA

Model	Part No.	GPM	PSI	HP	Electrical	Amps	Pump RPM	Pump	BTU	Ship Weight (lbs)	Ship Dimensions (L x W x H) Inches
VHP2-15024D	1.109-556.0	1.8	1500	2	120V / 1ph	17	1100	KP3030R	140,000	470	50" x 26" x 41"
VHP3-20024A	1.109-557.0	2.5	2000	5	230V / 1ph	20	1375	KP3030R	245,000	500	50" x 26" x 41"

ACCESSORIES

Order No.	Description
■ 8.756-481.0 ■	EASY!Force trigger gun (North American Model) - zero force required. Standard 1/4" connection for wand, 3/8" connection for hose.

OPTIONS (FACTORY INSTALLED)

Order No.	Description
<input type="checkbox"/> 8.903-538.0	Stainless-steel motor cover
<input type="checkbox"/> 8.903-501.0	Electronic ignition (convenience in lighting pilot) for 120V machine
<input type="checkbox"/> 8.925-856.0	Electronic ignition (convenience in lighting pilot) for 230V machine
■ Included <input type="checkbox"/> Optional ■ Please Note: NOT compatible with EASY!Lock	

HDS P / PE CAGE



Outstanding on all terrains.

Built on a rugged 1-1/4" powder coated steel frame, these compact gas roll cage models are designed for construction sites, farms and factories. The different models deliver hot water cleaning of up to 3500 PSI. Each features a Kärcher pump with limited 7-year warranty, industrial-grade motor and flat-free tires.



POWERED by
HONDA



Features

- Flat-free tires
- 7-year pump warranty
- EASY!Force gun with cruise control like technology - uses its own recoil force to hold the trigger down - so, no more sore hands after hours of use

TECHNICAL DATA

Model	Part No.	GPM	PSI	Drive	CC	Engine	Start	Pump	Burner	CARB*	Ship Weight (lbs)	Ship Dimensions (L x W x H) inches
HDS 2.8/25 P Cage	1.575-555.0	2.7	2400	Direct	196	Honda GX200	Recoil	Kärcher KG	12V DC	No	406	50 x 40 x 50
HDS 2.6/30 P Cage	1.575-550.0	3.0	3000	Direct	270	Honda GX270	Recoil	Kärcher KP	12V DC	No	500	50 x 40 x 58
HDS 3.5/30 P Cage	1.575-551.0	3.5	3000	Direct	337	Honda GX340	Recoil	Kärcher KS	12V DC	No	550	50 x 40 x 58
HDS 3.5/30 Pe Cage	1.575-552.0	3.5	3000	Direct	337	Honda GX340	Electric	Kärcher KS	12V DC	No	560	50 x 40 x 58
HDS 3.5/35 Pe Cage	1.575-553.0	3.5	3500	Direct	389	Honda GX390	Electric	Kärcher KS	12V DC	No	595	50 x 40 x 58
HDS 3.5/35 Pe Cage	1.110-085.0	3.5	3500	Direct	389	Vanguard 400	Electric	Kärcher KS	12V DC	Yes	595	50 x 40 x 58

ACCESSORIES

Order No.	Description
■ 8.756-481.0 ■	EASY!Force trigger gun (North American Model) - zero force required. Standard 1/4" connection for wand, 3/8" connection for hose.
■ Included □ Optional ■ Please Note: NOT compatible with EASY!Lock *CARB compliance required for sale in California	

BARDENAS SERIES



Performance at remote locations

These durable, skid-mounted models are designed for optimum cleaning performance at remote locations and feature Kärcher's unique 12V downdraft burner system. It's 92% efficient top-fired burner delivers more heat from less fuel, resulting in the lowest operating costs in the industry, and these skids feature belt-drive crankcase-style pumps. Certified to UL and CSA safety standards.



POWERED by
HONDA



Features

- Industrial-duty, tri-plunger, oil-bath, belt-drive Kärcher KT pump with 7-year warranty, brass pump head, and Tru-Trak belt adjustments; operates at a low RPM for low-maintenance operation and long life
- Proprietary scale inhibiting system prevents build-up of mineral deposits inside the coil
- Rust-free 11 gallon polyethylene diesel and gasoline tanks.
- Infinitely variable operating pressure, water volume, temperature control, and detergent metering
- Safety features include: pressure switches, rupture disk, low-water and low-fuel protection that shuts down burner when incoming water and fuel are insufficient or interrupted
- EASY!Force gun with cruise control like technology - uses its own recoil force to hold the trigger down - so, no more sore hands after hours of use

TECHNICAL DATA

Model	Part No.	GPM	PSI	Drive	CC	Engine	Fuel	Pump	CARB*	Ship Weight (lbs)	Ship Dimensions (L x W x H) Inches
HDS 5.5/35 Pe Cage	1.575-617.0	5.5	3500	Belt	11	Honda GX630	Gas	Kärcher KT	Yes	741	51 x 33 x 45

ACCESSORIES

Order No.	Description
■ 4.118-005.0 ■	EASY!Force trigger gun (German model) - zero force required.
■ 4.112-000.0 ■	41" spray lance
■ 6.110-029.0 ■	50' EASY!Lock Longlife hose with ANTI!Twist connection
■ 2.113-026.0 ■	Power Nozzle 25060 (Fits HDS 5.5/35 Pe Cage)
□ 4.111-041.0 ■	Adapter for EASY!Force trigger gun connecting to 3/8" hose

■ Included □ Optional ■ Compatible with EASY!Lock *CARB compliance required for sale in California

JALAPAO SERIES



The industrial workhorse.

Kärcher Jalapao series oil-fired skids are the workhorses of the pressure washer industry. Delivering up to 8.0 GPM of hot water and up to 3500 PSI, these rugged gas and diesel-powered machines are built on an open frame using heavy-gauge 1-1/4" powder coated steel and are ideal for mounting in a truck or on a trailer. The electric-start engine and powerful belt-drive Kärcher KT and KX pumps are isolated from the rest of the machine on a shock-mounted sub-frame to reduce vibration. Steam combination comes standard with all models.



Features

- Honda, Vanguard and Kubota engines with electric start
- Kärcher belt-drive tri-plunger pumps with 7-year warranty
- EASY!Force gun with cruise control like technology - uses its own recoil force to hold the trigger down - so, no more sore hands after hours of use

TECHNICAL DATA

Model	Part No.	GPM	PSI	Drive	CC	Engine	Fuel	Pump	Burner	CARB*	Ship Weight (lbs)	Ship Dimensions (L x W x H) Inches
HDS 4.8/30 Pe Cage	1.575-601.0	4.8	3000	Belt	570	Vanguard 18	Gas	Kärcher KT	12V DC	Yes	800	54 x 56 x 55
HDS 4.8/30 Pe Cage	1.575-602.0	4.8	3000	Belt	570	Vanguard 18	Gas	Kärcher KT	120V AC	Yes	945	54 x 56 x 55
HDS 4.7/35 Pe Cage	1.575-603.0	4.7	3500	Belt	688	Honda GX630	Gas	Kärcher KT	12V DC	Yes	855	54 x 56 x 55
HDS 4.7/35 Pe Cage	1.575-604.0	4.7	3500	Belt	688	Honda GX630	Gas	Kärcher KT	120V AC	Yes	890	54 x 56 x 55
HDS 5.6/35 Pe Cage	1.575-605.0	5.6	3500	Belt	688	Honda GX690	Gas	Kärcher KT	12V DC	Yes	852	54 x 56 x 55
HDS 5.6/35 Pe Cage	1.575-606.0	5.6	3500	Belt	688	Honda GX690	Gas	Kärcher KT	120V AC	Yes	970	54 x 56 x 55
HDS 5.6/35 De Cage	1.110-622.0	5.4	3500	Belt	1123	Kubota D1105-E3B	Diesel	Kärcher KT	12V DC	Yes	1214	54 x 56 x 55
HDS 5.6/35 De Cage	1.110-623.0	5.4	3500	Belt	1123	Kubota D1105-E3B	Diesel	Kärcher KT	120V AC	Yes	1300	54 x 56 x 55
HDS 8.0/30 Ge Cage	1.575-611.0	8.0	3000	Belt	688	Honda GX690	Gas	Kärcher KX	12V DC	Yes	805	54 x 56 x 55
HDS 8.0/30 Ge Cage	1.575-612.0	8.0	3000	Belt	688	Honda GX690	Gas	Kärcher KX	120V AC	Yes	865	54 x 56 x 55

ACCESSORIES

Order No.	Description
■ 8.756-481.0 ■	EASY!Force trigger gun (North American Model) - zero force required. Standard 1/4" connection for wand, 3/8" connection for hose.

OPTIONS

Order No.	Description
<input type="checkbox"/> 8.904-051.0	Battery (for use with GX630 and GX690 models only, field installed)
<input type="checkbox"/> 8.903-430.0	Stackless flue adapter (field installed)
■ Included <input type="checkbox"/> Optional ■ Please Note: NOT compatible with EASY!Lock *CARB compliance required for sale in California	

TRK-2500 HDS 4.7/35



Convenient cleaning performance.

Kärcher's TRK-2500 HDS 4.7/35 pressure washer trailer package includes the TRK-200 trailer, HDS 4.7/35 Pe Cage pressure washer, mounting kit, battery and high and low-pressure hose reels. This package is rugged, affordable, versatile, and easy to ship and store.

The TRK-2500 is made of rugged 10-gauge steel. The wheel and axle assembly features leaf-spring suspension of up to 3,500 lbs. The 39-inch tongue features a swing-away hinge that saves on storage space.



POWERED by
HONDA



Features

- Electrical wiring recessed within tubular frame
- Lighted license plate holder and recessed tail lights
- 1,000 lb. swivel jack with a 2-inch ball coupler for quick and easy hook up of the trailer
- 3-way ball valve for easy switching of the water flow from the holding tank to a faucet
- High-density, polyethylene 200-gallon water tank with a 12-inch access port, 1 1/2-inch drain valve, 3/4-inch float valve and a 50-mesh inlet filter; and two 5/16-inch chains for additional safety
- Electric or hydraulic brakes and break away kit

HDS 4.7/35 Features

- Honda engine and stainless steel coil wrap
- 1-1/4" full steel skid frame and electric start engine
- Burner available in 120V AC
- Kärcher belt-drive tri-plunger pump
- North American-style accessories
- EASY!Force trigger gun with cruise control like technology – uses its own recoil force to hold the trigger down – so, no more sore hands after hours of use.



TECHNICAL DATA

Model	Part No.	Axle	Breaks	(GVWR) lbs.	Water Tank (Gallons)	Ship Weight (lbs)	Ship Dimensions (L x W x H) Inches
TRK-2500 HDS 4.7/35	1.103-843.0	Single	Electric	3500	200	1815	123 x 76 x 70
TRK-2500 HDS 4.7/35	1.103-846.0	Single	Hydraulic	3500	200	1815	123 x 76 x 70

OPTIONS (FIELD INSTALLED)

Order No.	Description
<input type="checkbox"/> 8.917-558.0	Saddle Box (each)
<input type="checkbox"/> 8.917-559.0	Rock Guard
<input type="checkbox"/> 8.917-560.0	Utility Rack

TRK-2500 HDS 4.7/35 PACKAGE INCLUDES

Product	Description
TRK-2500	Single axle trailer, 3500 lbs GVWR, 200 gallon water tank
HDS 4.7/35 Pe Cage	Hot water pressure washer, 4.7 GPM, 3500 PSI, 688 CC, Honda GX630 engine, gas, 120V AC burner
Mounting Kit	Skid mounting kit
Battery	Battery installed on pressure washer
Hose Reels	Factory installed high-pressure and low-pressure hose reels

ACCESSORIES

Order No.	Description
■ 8.756-481.0 ■	EASY!Force trigger gun (North American Model) - zero force required. Standard 1/4" connection for wand, 3/8" connection for hose.
■ Included □ Optional ■ Please Note: NOT compatible with EASY!Lock	

TRK-2500



Shown with optional hot water pressure washer skid

High cleaning performance.

Kärcher's TRK-2500 pressure washer trailer is designed to accommodate a variety of pressure washer skids. This trailer package is rugged, affordable, versatile, and easy to ship and store.

The TRK-2500 is made of rugged 10-gauge steel. The wheel and axle assembly features leaf-spring suspension of up to 3,500 lbs. The 39-inch tongue features a swing-away hinge that saves on storage space.



Features

- Electrical wiring recessed within tubular frame
- Lighted license plate holder and recessed tail lights
- 1,000 lb. swivel jack with a 2-inch ball coupler for quick and easy hook up of the trailer
- 3-way ball valve for easy switching of the water flow from the holding tank to a faucet
- High-density, polyethylene 200-gallon water tank with a 12-inch access port, 1 1/2-inch drain valve, 3/4-inch float valve and a 50-mesh inlet filter; and two 5/16-inch chains for additional safety
- Electric brakes and break away kit

TECHNICAL DATA

Model	Part No.	Axle	(GVWR) lbs.	Water Tank (Gallons)	Ship Weight (lbs)*	Ship Dimensions (L x W x H) Inches
TRK-2500	1.103-819.0	Single	3500	200	1072	123 x 76 x 70

*Trailer and water tank only

OPTIONS

Order No.	Description
<input type="checkbox"/> 8.917-294.0	North American Engineered Series Skid mounting kit (required for mounting pressure washer to trailer)

OPTIONS (FACTORY INSTALLED)

Order No.	Description
<input type="checkbox"/> 8.917-398.0	Hydraulic Brakes
<input type="checkbox"/> 8.917-554.0	High Pressure Hose Reel Kit
<input type="checkbox"/> 8.924-493.0	2-5/16" Ball Hitch Coupler
<input type="checkbox"/> 8.917-555.0	Low Pressure Hose Reel Kit
<input type="checkbox"/> 8.917-556.0	Saddle Boxes (2)
<input type="checkbox"/> 8.917-557.0	Rock Guard
<input type="checkbox"/> 8.904-051.0	Battery Installed on Pressure Washer
<input type="checkbox"/> 8.917-583.0	Chrome wheels
<input type="checkbox"/> 8.924-368.0	3" Lunette coupler

OPTIONS (FIELD INSTALLED)

Order No.	Description
<input type="checkbox"/> 8.917-558.0	Saddle Box (each)
<input type="checkbox"/> 8.917-559.0	Rock Guard
<input type="checkbox"/> 8.917-560.0	Utility Rack

■ Included □ Optional ■ Please Note: NOT compatible with EASY!Lock

TRK-6000



TRK-6000 - shown with options and gas-powered hot water pressure washer; accommodates both gas and diesel-powered pressure washers. Tool box shown is no longer available on this unit.

Customizable mobile solution.

Kärcher has made customizing a mobile wash system for on-site cleaning easy.

1. Choose a compatible skid-mounted hot water pressure washer for the dual-axle TRK-6000 trailer. The trailer comes with a 330-gallon water tank.
2. Customize your trailer with a broad selection of options and accessories, such as hose reels, chrome coverings, etc.



Features

- Electrical wiring recessed within tubular frame
- Lighted license plate holder and recessed tail lights
- 1,000 lb. swivel jack with a 2-5/16 inch ball coupler for quick and easy hook up of the trailer
- Two 3-way ball valve for easy switching of the water flow from the holding tank to a faucet
- High-density, polyethylene 200-330 gallon water tank with a 12-inch access port, 1 1/2-inch drain valve, 3/4-inch float valve and a 50-mesh inlet filter; and two 5/16-inch chains for added safety
- Electric brakes and break away kit
- Rugged steel cage for security while transporting

TECHNICAL DATA

Model	Part No.	Axle	(GVWR) lbs.	Water Tank (Gallons)	Ship Weight (lbs)*	Ship Dimensions (L x W x H) Inches
TRK-6000	1.103-807.0	Tandem	6000	330	1080	185 x 82 x 65

*Trailer and water tank only

OPTIONS (FACTORY INSTALLED)

Order No.	Description
<input type="checkbox"/> 8.904-051.0	Battery installed on pressure washer
<input type="checkbox"/> 8.902-438.0	Hydraulic brakes, two axles, 2-5/16" ball coupler
<input type="checkbox"/> 8.902-452.0	Hydraulic brakes, two axles, 3" Lunette eye coupler
<input type="checkbox"/> 8.902-471.0	3" Lunette eye hitch coupler
<input type="checkbox"/> 8.912-409.0	2-5 gallon bucket chemical rack (factory installed only)
<input type="checkbox"/> 8.902-447.0	Hose reel kit for 100 ft. Of 3/8-inch high-pressure hose (no hose included)
<input type="checkbox"/> 8.902-448.0	Hose reel kit for 200 ft. Of 3/8-inch high-pressure hose (no hose included)
<input type="checkbox"/> 8.902-449.0	Hose reel kit for 75 ft. Of 3/4-inch industrial garden hose (no hose included)
<input type="checkbox"/> 8.902-455.0	Skid mounting & plumbing kit (required for mounting pressure washer to trailer)
<input type="checkbox"/> 8.902-469.0	Sign plate
<input type="checkbox"/> 8.902-466.0	Chrome wheels, pair, (2 pair required)
<input type="checkbox"/> 8.902-468.0	Chrome fenders, pair
<input type="checkbox"/> 8.924-475.0	2" ball coupler

■ Included □ Optional ■ Please Note: NOT compatible with EASY!Lock

PRO HD 400 ED



Practical anywhere.

The PRO HD 400 ED is a light weight, durable and compact cold water pressure washer that offers ultimate mobility for on-site applications and is designed to be stored, transported and operated in the vertical and horizontal position. It's features include a reliable 3-piston axial-pump with a brass cylinder head, an automatic pressure relief system for protecting the pump and storage options for accessories.



Features

- Vertical and horizontal operation for maximum flexibility and stability
- Rubber strap for secure storage of high-pressure hose
- EASY!Force gun with cruise control like technology - uses its own recoil force to hold the trigger down - so, no more sore hands after hours of use

TECHNICAL DATA

Model	Part No.	GPM	PSI	Drive	Electrical	Amps	Pump	Ship Weight (lbs)	Ship Dimensions (L x W x H) Inches
Pro HD 400 ED	1.520-990.0	1.7	1300	Direct	120V / 1ph ~ / 60 Hz	14	Kärcher Axial	45	36 x 14 x 13

ACCESSORIES

Order No.	Description
■ 4.118-005.0 ■	EASY!Force trigger gun
■ 4.112-006.0 ■	33" Spray lance
■ 6.110-034.0 ■	33' EASY!Lock hose
■ 2.113-062.0 ■	Power nozzle, 030
□ 4.113-003.0 ■	Rotating washing brush natural fiber bristles
□ 4.111-022.0 ■	Nozzle connector
□ 4.111-037.0 ■	Coupling
□ 2.115-000.0 ■	Quick-release coupling
□ 2.115-001.0 ■	Nipple
□ 4.114-018.0 ■	Performance Dirtblaster
□ 4.112-000.0 ■	41" Spray lance
□ 2.111-016.0 ■	Surface cleaner FR TR Classic
□ 2.111-017.0 ■	Surface cleaner FR Classic DIY
□ 4.111-032.0 ■	Adapter M 22 Swivel
□ 4.112-011.0 ■	Screw connector part
□ 6.110-034.0 ■	Extension hose 33'

■ Included □ Optional ■ Compatible with EASY!Lock

HD COMPACT CLASS



Designed to move.

The HD 1.8/13 C compact cold water pressure washer offers maximum portability, maneuverability and smart features. It can be stored, transported and operated in the vertical and horizontal position, and at 55.6 lbs, this professionally built unit can easily be moved by one person in and out of vehicles and around a cleaning site. It also includes storage options for accessories.



Features

- Vertical and horizontal operation for maximum flexibility and stability
- Additional carrying handle for easy loading, unloading and moving
- Removable and easy to clean water inlet filter that protects the pump from debris
- Rubber strap for secure storage of high-pressure hose.
- EASY!Force gun with cruise control like technology - uses its own recoil force to hold the trigger down - so, no more sore hands after hours of use

TECHNICAL DATA

Model	Part No.	GPM	PSI	Drive	Electrical	Amps	Pump	Ship Weight (lbs)	Ship Dimensions (L x W x H) Inches
HD 1.8/13 C	1.520-916.0	1.8	1300	Direct	120V / 1ph ~ / 60 Hz	14	Kärcher Axial	55.6	37 x 15 x 14

ACCESSORIES

Order No.	Description
■ 4.118-005.0	EASY!Force trigger gun
■ 4.112-006.0	33" Spray lance
■ 6.110-034.0	33' EASY!Lock hose
■ 4.117-027.0	Triple jet nozzle, 032
□ 2.112-000.0	Inno Foam kit
□ 2.112-010.0	Easy Foam set
□ 4.112-035.0	Flexible spray lance
□ 6.110-049.0	Pipe cleaning hose 65', 1740 psi
□ 6.110-050.0	Pipe cleaning hose 98', 1740 psi
□ 6.110-008.0	Pipe cleaning hose 65', 3625 psi
□ 4.113.004.0	Rotating washing brush nylon bristles
□ 4.113-003.0	Rotating washing brush natural fiber bristles
□ 2.111-011.0	Surface cleaner FR 30
□ 2.111-016.0	Surface cleaner FR TR Classic
□ 2.111-010.0	Surface cleaner FRV TR 30
□ 4.115-006.0	Wet blasting attachment
□ 4.111-022.0	Nozzle connector
□ 4.111-037.0	Coupling
□ 2.115-000.0	Quick-release coupling
□ 2.115-001.0	Nipple

■ Included □ Optional ■ Compatible with EASY!Lock

HD MID CLASS CAGE



For commercial use under tough conditions.

Whether in vertical or horizontal use: the unheated Cage mid class can cope with any situation in tough, daily commercial use. These mobile, very robust machines are equipped with a 3-piston axial pump with brass cylinder head, which makes possible an improvement of up to 15 percent in cleaning performance and energy efficiency.



Features

- Automatic pressure relief for protecting the components to extend their life
- Easy-to-access pump and electric box
- Sturdy, tubular steel frame protects all components and can be used to fasten the machine to a service vehicle

TECHNICAL DATA

Model	Part No.	GPM	PSI	Drive	Electrical	Amps	Pump	Ship Weight (lbs)	Ship Dimensions (L x W x H) Inches
HD 2.3/15 M Cage Ed	1.150-936.0	2.3	1500	Direct	110V / 1ph	19	Kärcher Axial	86	18 X 16 X 39
HD 3.0/20 M Cage Ea	1.150-939.0	3	2000	Direct	230V / 1ph	18	Kärcher Axial	86	18 X 16 X 39

ACCESSORIES

Order No.	Description
■ 4.118-005.0	EASY!Force trigger gun
■ 4.112-006.0	Jet pipe TR 33"
■ 2.113-043.0	Power nozzle TR 25036 (standard on 1.150-936.0)
■ 2.113-007.0	Power nozzle TR 25042 (standard on 1.150-939.0)
■ 6.110-034.0	High-pressure hose, 2 x EASY!Lock, DN 6, 3600 PSI, 33'
□ 6.110-035.0	High-pressure hose 2 x EASY!Lock DN 6, ANTI!Twist, 3600 PSI, 33'
□ 6.110-014.0	High-pressure hose, 2 x EASY!Lock, DN 8, ANTI!Twist, 4500 PSI, 100'
□ 6.110-030.0	High-pressure hose 2 x EASY!Lock DN 8, ANTI!Twist, 4500 PSI, 50'
□ 6.110-027.0	Longlife 400 high-pressure hose, 2 x EASY!Lock, DN 8, ANTI!Twist, 5800 PSI, 66'
□ 6.110-023.0	Longlife 400 high-pressure hose, 2 x EASY!Lock, DN 8, ANTI!Twist, 5800 PSI, 100'
□ 6.110-029.0	Longlife 400 high-pressure hose, 2 x EASY!Lock, DN 8, ANTI!Twist, 5800 PSI, 50'
□ 2.115-001.0	Male coupling
□ 2.115-000.0	Quick coupling
□ 4.114-041.0	Dirt blaster, large, size: 040
□ 2.111-013.0	Hard Surface Cleaner FR 30 Me
□ 2.111-010.0	FRV 30 Surface Cleaner
□ 2.640-401.0	Nozzle kit for FR 30 Me
□ 2.642-431.0	Nozzle kit for FRV 30

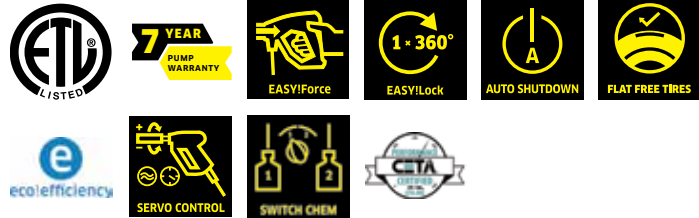
■ Included □ Optional ■ Compatible with EASY!Lock

HD MID CLASS



Loaded with features.

This medium class machine is extremely mobile and user-friendly with low-speed four-pole single phase motor for continuous use.



Features

- Unique CHEM switch system allows operator to switch between two on-board detergent tanks without interruption; includes precise two-way metering valve to accurately vary detergent volume
- Robust, three-piston axial pump feature detergent-resistant brass cylinder head and stainless valves; pump is protected by pressure switch and overflow valve
- Features ground-fault circuit interrupter (GFCI) for operator safety

TECHNICAL DATA

Model	Part No.	GPM	PSI	Drive	HP	Electrical	Amps	Pump	Ship Weight (lbs)	Ship Dimensions (L x W x H) Inches
HD 3.0/20-4M Ea	1.524-905.0	1.3-3.0	435-2000	Direct	4.7	220-240V / 1ph	20	Kärcher Axial	105	44 x 18 x 20

ACCESSORIES

Order No.	Description
■ 4.118-005.0 ■	EASY!Force trigger gun
■ 4.112-000.0 ■	33" spray lance
■ 6.110-035.0 ■	33' EASY!Lock hose
■ 2.113-009.0 ■	Power nozzle TR 25047
■ 4.118-007.0 ■	Rotary controller
□ 2.112-000.0 ■	Inno Foam kit
□ 2.112-010.0 ■	Easy foam set
□ 2.111-013.0 ■	FR 30 ME surface cleaner
□ 2.111-023.0 ■	FR TR 50 ME hard surface cleaner
□ 2.111-011.0 ■	Surface cleaner FR 30
□ 2.111-010.0 ■	FRV TR 30 hard surface cleaner
□ 4.115-000.0 ■	Wet blasting attachment
□ 4.115-006.0 ■	Wet blasting attachment
□ 2.111-009.0 ■	Nozzle kit
□ 2.113-003.0 ■	Power nozzle 40° spray angle

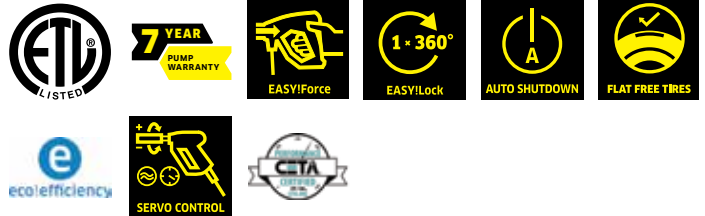
■ Included □ Optional ■ Compatible with EASY!Lock

HD SUPER CLASS



For tough jobs in non-stop use.

Where vast amounts of dirt accumulate every day, reliable Kärcher super class models provide indispensable services. Ideal for use in the construction, agricultural and forestry sectors as well as industrial and municipal facilities.



Features

- Robust, three-piston axial pumps features detergent-resistant brass cylinder head and stainless valves; pumps is protected by pressure switch and over flow valve
- Low-speed, 4-pole, air-cooled motor runs quieter and cooler than conventional motors thus prolonging its service life
- EASY!Force gun with cruise control like technology – uses its own recoil force to hold the trigger down – so, no more sore hands after hours of use

TECHNICAL DATA

Model	Part No.	GPM	PSI	Drive	HP	Electrical	Amps	Pump	Ship Weight (lbs)	Ship Dimensions (L x W x H) Inches
HD 3.5/30-4S Ea	1.286-908.0	1.8-3.5	435-3000	Direct	9	220/240V / 1ph	28	Kärcher Axial	178	47 x 21 x 23
HD 4.5/32-4S Eb	1.286-909.0	2.2-4.5	435-3200	Direct	10	230V / 3ph	25	Kärcher Axial	178	47 x 21 x 23
HD 4.5/32-4S Ec	1.286-910.0	2.2-4.5	435-3200	Direct	10	460V / 3ph	14	Kärcher Axial	160	47 x 21 x 23

ACCESSORIES

Order No.	Description
■ 4.118-005.0	EASY!Force trigger gun
■ 4.112-000.0	41" spray lance
■ 6.110-030.0	50' EASY!Lock hose with ANTI!Twist connection
■ 2.113-022.0	Power nozzle, 045 (for machine 1.286-908.0)
■ 2.113-025.0	Power nozzle, 055 (for machine 1.286-909.0)
□ 4.118-008.0	Servo control
□ 2.112-000.0	Inno Foam kit
□ 2.112-015.0	Gutter cleaning lance
□ 4.112-035.0	Flexible spray lance
□ 6.110-049.0	Pipe cleaning hose 65', 1740 psi
□ 6.110-050.0	Pipe cleaning hose 98', 1740 psi
□ 6.110-008.0	Pipe cleaning hose 65', 3625 psi
□ 2.111-023.0	FR TR 50 ME hard surface cleaner
□ 2.111-012.0	FRV TR 30 ME
□ 2.111-011.0	Surface cleaner FR 30
□ 2.111-010.0	FRV TR 30 hard surface cleaner
□ 4.115-000.0	Wet blasting attachment
□ 2.113-020.0	25° power nozzle for applying cleaning agent
□ 4.114-019.0	Dirtblaster Nozzle 035
□ 4.637-033.0	Detergent injector for high pressure
□ 4.111-037.0	Coupling

■ Included □ Optional ■ Compatible with EASY!Lock

HD SPECIAL CLASS



For strict hygiene requirements.

Cold water high-pressure cleaner was designed specifically for all-purpose industrial use in the sanitary/food industry. This top-of-the-range machine from the compact class allows you to regulate pressure and water flow seamlessly.



Features

- Food-safe, non-marking high-pressure hose.
- Wear-resistant and non-marking gray wheels
- Accepts inlet water at temperatures up to 180oF
- Easy access to the variable pressure and water flow regulation and the "Inno Foam Set" high-pressure foam system can be used.
- EASY!Force gun with cruise control like technology - uses its own recoil force to hold the trigger down - so, no more sore hands after hours of use

TECHNICAL DATA

Model	Part No.	GPM	PSI	Drive	HP	Electrical	Amps	Pump	Ship Weight (lbs)	Ship Dimensions (L x W x H) Inches
HD 2.3/14 C Ed Food	1.150-912.0	2.3	1400	Direct	3.2	120V / 1ph	20	Kärcher Axial	78	39 x 15 x 28

ACCESSORIES

Order No.	Description
■ 4.118-015.0 ■	EASY!Force trigger gun for food applications
■ 4.112-006.0 ■	33" spray lance
■ 6.110-063.0 ■	50' EASY!Lock food grade hose with AVS hose reel connection
■ 4.117-033.0 ■	Triple jet nozzle, 040
□ 2.112-009.0 ■	Inno Foam (food grade - including nozzle inserts)

■ Included □ Optional ■ Compatible with EASY!Lock

HD WALL MOUNTED



Convenient and quiet.

Kärcher's wall-mount unit has a durable steel frame, uses a quiet 1725 RPM motor, and is perfect for in-shop uses. A remote on/off switch with a 10' electrical cord allows the machine to be mounted high on a wall away from backspray.



Shown with optional wall mount bracket part no. 8.920-952.0

Features

- Accepts hot water up to 180 degrees
- Remote on/off switch
- Kärcher Triplex crankcase pump

TECHNICAL DATA

Model	Part No.	GPM	PSI	Drive	HP	Electrical	Amps	Pump	Ship Weight (lbs)	Ship Dimensions (L x W x H) Inches
HD 2.0/14 Ed +	1.107-088.0	1.8	1400	Direct	2	120V / 1ph	20	Kärcher KE	123	20 x 19 x 17

ACCESSORIES

Order No.	Description
<input type="checkbox"/> 8.920-952.0	Wall mount bracket
<input checked="" type="checkbox"/> Included <input type="checkbox"/> Optional	

HD SERIES ELECTRIC



Designed for versatility.

Kärcher's cold water carts are corrosion-resistant aluminum pressure washers that easily convert from a cart to a skid for maximum cleaning versatility and durability. These reliable electric powered pressure washers have a low profile handle and compact footprint, making them easy to maneuver, and they offer a bypass loop for additional pump protection. 7-year pump warranty and flat-free tires.



Features

- Durable, corrosion resistant aluminum frame
- Modular design - weld free frame easily converts from cart to skid
- Flat free tires
- VRT3 Unloader with bypass loop - pump protection
- Commercial-duty Leuco crankcase pump

TECHNICAL DATA

Model	Part No.	GPM	PSI	Drive	HP	Electrical	Amps	Pump	Pump RPM	Ship Weight (lbs)	Ship Dimensions (L x W x H) Inches
HD 2.0/1000 Ed	9.801-814.0	2.0	1000	Direct	1.5	120V / 1ph	15	Kärcher KF	1725	161	41 x 22 x 25
HD 1.9/1300 Ed	9.801-794.0	1.9	1300	Direct	2	120V / 1ph	20	Kärcher KF	1725	175	41 x 22 x 25
HD 3.0/1000 Ed	9.801-795.0	3.0	1000	Direct	2	120V / 1ph	20	Kärcher KF	1725	180	41 x 22 x 25
HD 3.5/2000 Ea	9.801-796.0	3.5	2000	Direct	5	230V / 1ph	22	Kärcher KF	3450	181	41 x 22 x 25

ACCESSORIES

Order No.	Description
■ 8.750-247.0	Gun
■ 8.925-129.0	Hose
■ 8.783-040.0	Lance
■ 9.802-216.0	Chemical injector
■ 8.712-398.0	Nozzle, QCEM-6540 Brass (Chem)
■ 8.712-337.0	Nozzle, red, 035
■ 8.712-338.0	Nozzle, yellow, 035
■ 8.712-339.0	Nozzle, green, 035
■ 8.712-340.0	Nozzle, white, 035
□ 8.712-429.0	Rotary nozzle
□ 8.925-229.0	Legacy, 100' x 3/8" ID, 4500 PSI, 2-wire, smooth cover, black high pressure hose
□ 8.753-572.0	A+ Surface Cleaner SC21
□ 8.753-573.0	A+ Surface Cleaner SC24
□ 9.302-243.0	Legacy Turbo Nozzle, 4.0, 4350 PSI
□ 8.710-620.0	Legacy Superlite stainless steel, 72" - 56.0 oz
□ 9.807-754.0	Skid mount feet
□ 9.807-750.0	37.5" long handle
□ 9.807-753.0	Lance holder
□ 9.807-752.0	Hose storage hook
□ 9.807-751.0	Handle with hose reel

■ Included □ Optional

HD ROLL CAGE



Specialty applications.

These belt-drive, electric roll cage models feature cleaning power of 5000 PSI and are available with either 230/3 phase or 460/3 phase motors. These units are specialty machines perfect for use in the marine market cleaning the bottom of boats or in the concrete industry, mixers, forms and handling equipment. Both models are ETL safety certified.



Features

- Rugged steel chassis & roll cage
- Kärcher Belt-drive crankcase pump
- Cleaning power of 5000 PSI
- Flat-free tires
- 20 HP motor
- 50' high-pressure hose

TECHNICAL DATA

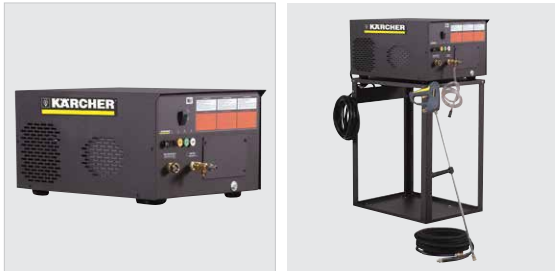
Model	Part No.	GPM	PSI	Drive	HP	Electrical	Amps	Pump	Ship Weight (lbs)	Ship Dimensions (L x W x H) Inches
HD 5.0/50 Eb Cage	1.107-084.0	5.0	5000	Belt	20	230V / 3ph	48	Kärcher KX	524	42 x 26 x 30
HD 5.0/50 Ec Cage	1.107-087.0	5.0	5000	Belt	20	460V / 3ph	26	Kärcher KX	524	42 x 26 x 30

ACCESSORIES

Order No.	Description
<input type="checkbox"/> 9.801-029.0	100' hose reel kit, 5000 PSI (hose not Included)

■ Included Optional

HD CABINET - BELT DRIVE



Industrial throughout.

Our cold-water cabinet units accept pre-heated water up to 145°F. Protected in durable steel cabinets, they demonstrate industrial strength throughout, including belt-drive Kärcher crankcase pumps, industrial motors, and magnetic starters for operator safety.



Features

- Hour Meter is standard on all models
- A thermal pump protector to prevent the buildup of excessive pressures or heat.
- High-Pressure Pump (with 7-year warranty) by dual, V-cogged belts.
- EASY!Force gun with cruise control like technology - uses its own recoil force to hold the trigger down - so, no more sore hands after hours of use

TECHNICAL DATA

Model	Part No.	GPM	PSI	Drive	HP	Electrical	Amps	Pump	Ship Weight (lbs)	Ship Dimensions (L x W x H) Inches
HD 2.8/10 ST Ed B	1.575-300.0	2.8	1000	Belt	2	120V / 1ph	20	Kärcher KM	210	31 x 21 x 16
HD 4.2/20 ST Ea B	1.575-301.0	4.2	2000	Belt	6	230V / 1ph	29	Kärcher KM	285	31 x 21 x 16
HD 4.2/20 ST Eb B	1.575-302.0	4.2	2000	Belt	6	230V / 3ph	22	Kärcher KM	255	31 x 21 x 16
HD 4.2/20 ST Ec B	1.575-303.0	4.2	2000	Belt	6	460V / 3ph	11	Kärcher KM	260	31 x 21 x 16
HD 4.2/20 ST Eh B	1.575-305.0	4.2	2000	Belt	6	208V / 3ph	16	Kärcher KM	265	31 x 21 x 16
HD 3.5/30 ST Ea B	1.575-306.0	3.5	3000	Belt	7.5	230V / 1ph	36	Kärcher KM	330	31 x 21 x 16
HD 3.5/30 ST Eb B	1.575-307.0	3.5	3000	Belt	7.5	230V / 3ph	19	Kärcher KM	275	31 x 21 x 16
HD 3.5/30 ST Ec B	1.575-308.0	3.5	3000	Belt	7.5	460V / 3ph	11	Kärcher KM	270	31 x 21 x 16
HD 3.5/30 ST Eg B	1.575-309.0	3.5	3000	Belt	7.5	208V / 1ph	38	Kärcher KM	332	31 x 21 x 16
HD 3.5/30 ST Eh B	1.575-310.0	3.5	3000	Belt	7.5	208V / 3ph	23	Kärcher KM	271	31 x 21 x 16

ACCESSORIES

Order No.	Description
■ 8.756-481.0 ■	EASY!Force trigger gun (North American Model) - zero force required. Standard 1/4" connection for wand, 3/8" connection for hose.
■ 9.801-013.0	Hour Meter (factory included)

OPTIONS (FACTORY INSTALLED)

Order No.	Description
<input type="checkbox"/> 9.802-197.0	Conversion to Stainless Steel Cabinet (for HD 2.8/10 ST Ed B model)
<input type="checkbox"/> 9.801-002.0	Conversion to Stainless Steel Cabinet (for HD 3.5/30 and HD 4.2/20 models)
<input type="checkbox"/> 8.903-045.0	Kit Time Delay Shutdown (for HD 2.8/10 ST Ed B model)
<input type="checkbox"/> 8.929-374.0	Kit Time Delay Shutdown (for HD 4.2/20 ST Ea B model)
<input type="checkbox"/> 8.903-041.0	Kit Time D)
<input type="checkbox"/> 8.929-376.0	Kit Auto Start/Stop (for HD 2.8/10 ST Ed B model)
<input type="checkbox"/> 8.929-377.0	Kit Auto Start/Stop (for HD 4.2/20 ST Ea B model)
<input type="checkbox"/> 8.903-047.0	Kit Auto Start/Stop (for HD 3.5/30 and HD 4.2/20 models, excluding HD 4.2/20 ST Ea B)

OPTIONS (FIELD INSTALLED)

Order No.	Description
<input type="checkbox"/> 9.801-033.0	Wall Mount Kit
<input type="checkbox"/> 8.903-043.0	Stainless Steel Wall Mount Kit
<input type="checkbox"/> 8.903-040.0	Floor Stand, 24" short
<input type="checkbox"/> 9.801-034.0	Floor Stand, 36" Tall
<input type="checkbox"/> 8.903-617.0	Stainless Steel Floor Stand, 36" Tall

OPTIONS (FIELD INSTALLED)

Order No.	Description
<input type="checkbox"/> 8.941-546.0	Stainless Steel Floor Stand, without Hose Hanger
<input type="checkbox"/> 9.801-036.0*	Hose Reel Kit, Floor Stand Only, 100 ft, No Hose
<input type="checkbox"/> 8.750-682.0*	100' x 3/8" fixed base hose reel
<input type="checkbox"/> 8.919-437.0*	Wall Mount
<input type="checkbox"/> 8.903-039.0*	Kit, Hose Reel w/Bracket for Stand, Wall Mount Kits

■ Included □ Optional ■ Please Note: NOT compatible with EASY!Lock

JARVIS SERIES



Quick and easy outdoor cleaning solution.

The Jarvis series is a complete solution for quick, streak-free cleaning of businesses' entrances, parking lots, tennis courts, pool decks and sidewalks. This easy to use cold water surface cleaner pressure washer is an all-in-one unit with the pump and engine attached to the surface cleaner.

Designed to attack the superficial dirt sweeping alone does not get. The Jarvis surface cleaner pressure washer is perfect for all operators - simple on / off operation and flat free tires. Choose between the Jarvis with a folding handle for easy transport and storage or a conveniently mounted hose reel with 50' of non-marking hose to have a more flexible and wider cleaning radius. Either way productivity is in your corner.



NEW Jarvis 28" (L) with original Jarvis 21" (R)



Features

- 21" or 28" corrosion-resistant stainless steel surface cleaner housing and a professional grade swivel design
- Solid, powerful engines on both models with the Kärcher engine's 4-year warranty or the Honda GX engine's 3-year warranty
- Flat free tires
- Simple on / off operation
- EASY!Force gun with cruise control like technology - uses its own recoil force to hold the trigger down - so, no more sore hands after hours of use

TECHNICAL DATA

Model	Part No.	GPM	PSI	Drive	CC	Engine	Pump	CARB*	Ship Weight (lbs)	Ship Dimensions (L x W x H) Inches
SCW 2.4/25 G	1.107-380.0	2.4	2500	Direct	200	Honda GX 200	KP3035G	Yes	159	44.04" x 27.6" x 34.2"
SCW-4.0/40 G	1.107-437.0	4.0	4000	Direct	408	Karcher	KS4040G.3	Yes	212	52.5" x 34.5" x 35.1"

ACCESSORIES

Order No.	Description
■ 8.756-481.0 ■	EASY!Force trigger gun (North American Model) - zero force required. Standard 1/4" connection for wand, 3/8" connection for hose.
■ 8.711-370.0	Nozzle used on wand
■ 8.707-537.0	Nozzle used on spray arm of surface cleaner (2 needed)
■ 8.925-467.0	Hose
■ 9.802-214.0	Wand

■ Included □ Optional ■ Please Note: NOT compatible with EASY!Lock *CARB compliance required for sale in California

TETON SERIES



Cleaning versatility and durability.

Corrosion-resistant and light-weight, Kärcher's direct or belt drive, Teton Series aluminum pressure washers can be utilized as a cart or a skid for maximum cleaning versatility and durability. These reliable Kärcher powered pressure washers offer a 4-year engine warranty, bypass loop for additional pump protection, 7-year pump warranty and flat-free tires.



Features

- Reliable Kärcher engine with an extended 4-year warranty
- Direct and belt drive models
- Durable VRT3 unloader with bypass loop diverts water flow when trigger gun is not activated
- Aluminum frame - modular design - converts easily from cart to skid
- CARB Compliant

TECHNICAL DATA

Model	Part No.	GPM	PSI	Drive	CC	Engine	Pump	CARB*	Ship Weight (lbs)	Ship Dimensions (L x W x H) inches
HD 3.0/27 G Teton	1.107-398.0	3.0	2700	Direct	212	Kärcher	Crankcase	Yes	112	45 x 28 x 29
HD 4.0/40 G Teton	1.107-399.0	4.0	4000	Direct	420	Kärcher	Crankcase	Yes	130	45 x 28 x 29
HD 4.0/40 Ge Teton†	1.107-400.0	4.0	4000	Direct	420	Kärcher	Crankcase	Yes	158	45 x 28 x 29
HD 3.5/35 G Teton	1.107-440.0	3.5	3500	Direct	302	Kärcher	Crankcase	Yes	132	45 x 28 x 29
HD 3.0/27 GB Teton	1.107-441.0	3.0	2700	Belt	212	Kärcher	Crankcase	Yes	123	45 x 28 x 29
HD 3.5/35 GB Teton	1.107-442.0	3.5	3500	Belt	302	Kärcher	Crankcase	Yes	158	45 x 28 x 29
HD 4.0/40 GB Teton	1.107-443.0	4.0	4000	Belt	420	Kärcher	Crankcase	Yes	169	45 x 28 x 29
HD 4.0/40 GeB Teton	1.107-444.0	4.0	4000	Belt	420	Kärcher	Crankcase	Yes	205	45 x 28 x 29
HD 5.0/30 GB Teton	1.107-445.0	5.0	3000	Belt	420	Kärcher	Crankcase	Yes	169	45 x 28 x 29

ACCESSORIES

Order No.	Description
■ 8.750-247.0	Trigger Gun, model M407
■ 8.925-129.0	Hose, 50' x 3/8", 1w, 4,000 PSI SWXSO
■ 8.783-039.0	Lance 30" Zinc plated, handle & coupler (for HD 3.0/27 G Classic)
■ 8.783-040.0	Lance 44" Zinc plated, handle & coupler (for HD 4.0/40 G Classic and HD 4.0/40 Ge Classic)
■ 9.802-216.0	Injector, Chem, NON ADJ, 0.083
□ 8.712-429.0	Nozzle
□ 8.925-229.0	Legacy, 100' x 3/8" ID, 6000 PSI, 2-wire, smooth cover, black high pressure hose
□ 8.753-572.0	A+ Surface Cleaner SC21
□ 8.753-573.0	A+ Surface Cleaner SC24
□ 9.302-243.0	Legacy Turbo Nozzle, 4.0, 4350 PSI
□ 8.710-620.0	Legacy Superlite stainless steel wand, 72" - 56.0 oz
□ 9.807-754.0	Skid mount feet
□ 9.807-750.0	37.5" long handle
□ 9.807-753.0	Lance holder
□ 9.807-752.0	Hose storage hook
□ 9.807-751.0	Handle with hose reel (mild steel anthracite handle)

■ Included □ Optional †Electric start available on select models. *CARB compliance required for sale in California

HD SERIES GAS



Easily converts from cart to skid.

Corrosion-resistant and light-weight, Kärcher's HD Series Gas aluminum pressure washers have a durable weldless, modular frame that can be utilized as a cart or converted to a skid (optional - sold separately) for maximum cleaning versatility and durability. Easy to maneuver with puncture proof, flat free tires. These reliable Vanguard powered pressure washers offer a bypass loop for additional pump protection, 7-year pump warranty on the oil end of the pump. The simple design of the HD Gas helps get the job done quickly and without hassle.



Features

- Up to 4.0 GPM, 4000 PSI
- Belt or direct drive models with a reliable Vanguard engine
- Durable VRT3 unloader with bypass loop diverts water flow when trigger gun is not activated
- Compact Footprint with aluminum frame - modular design - converts easily from cart to skid†

TECHNICAL DATA

Model	Part No.	GPM	PSI	Drive	Start	Pump	CC	Engine	CARB*	Ship Weight (lbs)	Ship Dimensions (L x W x H) Inches
HD 3.5/35 G	1.107-421.0	3.5	3500	Direct	Recoil	Crankcase	270	Vanguard 300	Yes	130	45 x 28 x 29
HD 4.0/40 G	1.107-429.0	4.0	4000	Direct	Recoil	Crankcase	389	Vanguard 400	Yes	149	45 x 28 x 29
HD 4.0/40 Ge	1.107-435.0	4.0	4000	Direct	Electric	Crankcase	389	Vanguard 400	Yes	158	45 x 28 x 29
HD 3.5/35 GB	1.107-422.0	3.5	3500	Belt	Recoil	Crankcase	270	Vanguard 300	Yes	156	45 x 28 x 29
HD 4.0/40 GB	1.107-430.0	4.0	4000	Belt	Recoil	Crankcase	389	Vanguard 400	Yes	160	45 x 28 x 29
HD 4.0/40 GeB	1.107-434.0	4.0	4000	Belt	Electric	Crankcase	389	Vanguard 400	Yes	196	45 x 28 x 29
HD 5.0/30 GB	1.107-446.0	5.0	3000	Belt	Recoil	Crankcase	389	Vanguard 400	Yes	160	45 x 28 x 29

ACCESSORIES

Order No.	Description
■ 8.750-247.0	Trigger Gun, model M407
■ 8.925-129.0	Hose, 50' x 3/8", 1w, TS, SOXSW
■ 8.783-039.0	Lance 30" Zinc plated, handle & coupler (for HD 3.0/27 AG, HD 3.0/27 AGB)
■ 8.783-040.0	Lance 44" Zinc plated, handle & coupler (for HD 3.4/35 G, HD 4.0/41 G, HD 4.0/41 Ge, HD 3.3/35 GB, HD 4.0/40 GB, HD 4.0/40 GeB)
■ 9.802-216.0	Injector, Chem, NON ADJ, 0,083
□ 8.712-429.0	Nozzle
□ 8.925-229.0	Legacy, 100' x 3/8" ID, 6000 PSI, 2-wire, smooth cover, black high pressure hose
□ 8.753-572.0	A+ Surface Cleaner SC21

ACCESSORIES

Order No.	Description
□ 8.753-573.0	A+ Surface Cleaner SC24
□ 9.302-243.0	Legacy Turbo Nozzle, 4.0, 4350 PSI
□ 8.710-620.0	Legacy Superlite stainless steel, 72" - 56.0 oz
□ 9.807-754.0	Skid mount feet
□ 9.807-750.0	37.5" long handle
□ 9.807-753.0	Lance holder
□ 9.807-752.0	Hose storage hook
□ 9.807-751.0	Handle with hose reel
□ 8.929-509.0	Hose reel kit for direct driven machines
□ 8.929-511.0	Hose reel kit for belt driven machines

■ Included □ Optional *CARB compliance required for sale in California
†Models shown with Honda engine not currently available

HD SERIES GAS SKID



*Pressure washer sold separate.

Cleaning on the go.

The perfect accompaniment to Kärcher's HD Series Gas and Teton Series direct drive pressure washers - these mild steel skids offer two configurations:

1. Skid with a 50 gallon water tank and one 100' hose reel
or
2. Skid with two 100' hose reels.

The HD Series Gas skids fit within a standard UTV / ATV bed and work with three different direct drive aluminum pressure washers to offer ultimate portability and usability for various applications.



Features

- 50 gallon water tank (HD Pallet Skid with Tank only)
- Forklift holes
- Includes skid feet
- 1 to 2, 100' hose reels
- Fits within standard UTV/ATV bed
- Assembly required

TECHNICAL DATA

Model	Part No.	Frame Material	Description	Compatible Pressure Washer (sold separately)	Ship Weight (lbs)	Ship Dimensions (L x W x H) Inches
HD Pallet Skid with Tank	9.807-833.0	Mild Steel	50 gal water tank and 1 hose reel	HD Series Gas direct drive HD 3.5/35 G (1.107-421.0) HD 4.0/40 G (1.107-429.0) HD 4.0/40 Ge (1.107-435.0)	185	40 x 48 x 35
HD Pallet Skid with 2 Hose Reels	9.807-838.0	Mild Steel	2 hose reels	Teton Series direct drive HD 3.0/27 G Teton (1.107-398.0) HD 4.0/40 G Teton (1.107-399.0) HD 4.0/40 Ge Teton (1.107-400.0) HD 3.5/35 G Teton (1.107-440.0)	172	40 x 48 x 35

OPTIONS (FACTORY INSTALLED)

Order No.	Description
<input type="checkbox"/> 8.923-105.0	Rubber feet kit
<input type="checkbox"/> 8.923-107.0	Inlet filter kit
<input type="checkbox"/> 8.923-106.0	Lifting eye bolts kit
<input type="checkbox"/> 8.923-108.0	Three-way valve kit

■ Included Optional

HD CART



Compact and dependable.

The HD Carts are tough gasoline-powered direct-drive cold water machines that deliver cleaning power of up to 2400 PSI. Built on compact sturdy steel frames, each unit features a dependable industrial-grade Honda engine, Kärcher crankcase pump, hose/gun rack, detergent injection, and tubed pneumatic tires.



Features

- Steel frame with powder coat finish
- Commercial grade Honda GX engine
- Cleaning power up to 2400 PSI
- Industrial direct-drive Kärcher crankcase pump

TECHNICAL DATA

Model	Part No.	GPM	PSI	Drive	CC	Engine	Pump	CARB*	Ship Weight (lbs)	Ship Dimensions (L x W x H) Inches
HD 2.3/24 P	1.575-100.0	2.3	2400	Direct	163	Honda GX160	Kärcher KP	Yes	130	35 x 21 x 24

OPTIONS (FIELD INSTALLED)

Order No.	Description
■ 9.801-026.0	100' EZEE Hose Reel kit (hose not Included)

■ Included □ Optional *CARB compliance required for sale in California

HD PB / D CAGE



Extra rugged and powerful.

Our roll cage models are the most powerful units in our cold water line, with cleaning power of up to 5000 PSI. Protected by either a rugged powder coated roll cage built of 1-1/4" steel or a corrosion-resistant stainless steel cage, these units feature powerful Vanguard or Kohler engines, tri-plunger oil bath Kärcher pumps, flat-free tires, and an extra rugged belt-drive assembly with notched V belts and cast iron pulleys.



Features

- Belt-drive
- Rugged steel chassis & roll cage for PB model. Corrosion-resistant stainless steel frame for D Cage model only
- Vanguard or new Kohler engine - model HD 3.4/30 D Cage (Shown to the left)
- Electric start on dual-axle models
- Industrial belt-drive Kärcher pump with 7-year warranty
- Flat-free tires on all models

TECHNICAL DATA

Model	Part No.	GPM	PSI	Drive	CC	Engine	Fuel	Pump	CARB*	Ship Weight (lbs)	Ship Dimensions (L x W x H) Inches
HD 4.0/40 PB Cage	1.575-207.0	4.0	4000	Belt	479	Vanguard 16	Gas	Kärcher KT	Yes	470	42 x 26 x 30
HD 3.4/30 D Cage	1.107-373.0	3.4	3000	Belt	442	Kohler KD440	Diesel	LM3540R.3	Yes	195	50 x 40 x 50

OPTIONS (FIELD INSTALLED)

Order No.	Description
<input type="checkbox"/> 9.801-028.0	100' EZEE Hose Reel kit, single axle (hose not Included)
<input type="checkbox"/> 9.801-029.0	100' Hose Reel kit, 5000 psi, double axle (hose not Included)
<input type="checkbox"/> 8.750-682.0	100' capacity Hose Reel fixed base (for HD 3.4/30 D Cage model only)
<input type="checkbox"/> 8.929-070.0	Skid feet (for HD 3.4/30 D Cage model only)

■ Included □ Optional *CARB compliance required for sale in California

HD 7.9/72-4 CAGE EC



Maximum power in a compact package.

The HD 7.9/72-4 Cage Ec high pressure cleaner features one-button operation and an automatic pressure relief valve, making it easy to use, while delivering the most powerful cleaning performance in its class for a variety of applications.



Features

- Built-in pressure relief valve reduces pressure in the hose, remaining flexible when the trigger gun is closed
- Pressure increases gradually when activating the trigger gun prevents sudden jolts
- Large wheels, crane hook and an optimal center of gravity ensure easy transportation, even over rough terrain

TECHNICAL DATA

Model No.	Part No.	PSI	GPM	Max. Inlet Temp	Pump	Drive	Motor Rating	Ship Weight (lbs)	Ship Dimensions (L x W x H) Inches
HD 7.9/72-4 Cage Ec	1.367-163.0	7,200	7.9	140° F	Crankshaft	E-Motor 460 V / 60 Hz	30 kW / 41 HP	699	51.9 x 29.4 x 43

ACCESSORIES

Order No.	Item Description
■ 4.775-824.0	Kärcher industry gun
■ 4.760-679.0	28" spray lance (up to 9,280 PSI)
■ 6.391-847.0	66' pressure hose (up to 8,990 PSI)
■ 5.765-263.0	Flat jet nozzle, 060
□ 2.637-017.0	Add-on kit pre pressure pump
□ 2.639-251.0	Shoulder support
□ 4.760-653.0	41" spray lance (up to 9,280 PSI)
□ 4.760-675.0	60" spray lance (up to 9,280 PSI)
□ 4.760-677.0	81" spray lance (up to 9,280 PSI)
□ 4.403-004.0	Hose coupling
□ 6.391-846.0	33' pressure hose (up to 8,990 PSI)
□ 6.391-019.0	100' pressure hose (up to 8,990 PSI)
□ 2.113-073.0	Flat jet nozzle, 075 (5,075 PSI)
□ 2.113-075.0	Flat jet nozzle, 095 (3,625 PSI)
□ 2.113-077.0	Flat jet nozzle, 120 (2,175 PSI)
□ 5.765-264.0	Point jet nozzle, 060
□ 2.113-074.0	Point jet nozzle, 075 (5,075 PSI)
□ 2.113-076.0	Point jet nozzle, 095 (3,625 PSI)
□ 2.113-078.0	Point jet nozzle, 120 (2,175 PSI)

■ Included □ Optional

ACCESSORIES

Order No.	Item Description
□ 6.415-060.0	F9 power rotary jet (7,200 PSI)
□ 6.025-526.0	F9 power rotary jet repair kit
□ 6.025-233.0	Tool for changing rotor seat
□ 6.392-401.0	33' pipe cleaning hose
□ 6.392-402.0	66' pipe cleaning hose
□ 6.392-403.0	100' pipe cleaning hose
□ 6.470-223.0	Foot valve
□ 6.025-527.0	Pipe cleaning nozzle, Standard 060
□ 6.025-528.0	Pipe cleaning nozzle, Quattro 060
□ 6.025-529.0	Pipe cleaning nozzle, Rotary 060
□ 6.025-257.0	Mounting tool for nozzle kit
□ 9.917-716.0	Abrasive blaster
□ 9.886-552.0	F98 3-nozzle kit for abrasive blaster
□ 6.025-308.0	Abrasive material hose
□ 6.025-258.0	Suction lance
□ 5.401-325.0	Adapter M20 to UNF
□ 2.643-577.0	FRI 50 Me industrial surface cleaner, 20"
□ 6.415-059.0	Nozzle kit for FRI 50 Me

MOBILE HOT WATER GENERATOR



Hot water heater.

For attaching to a cold water pressure washer.

Our Kärcher Series water heater provides supplemental heat to cold water machines, giving users the benefits of hot water cleaning when it's needed. An electric-powered, diesel heated unit, the Heater 5.0/30 Ed effectively heats water at a rate of up to 5 gallons per minute.



Features

- Effective heating of up to 5 GPM
- Heavy-duty, steel cabinet protected by an epoxy powder coat finish
- Portable

TECHNICAL DATA

Model	Part No.	GPM	PSI	Electrical	Amps	Heated By	Ship Weight (lbs)	Ship Dimensions (L x W x H) Inches
Heater 5.0/30 Ed	1.575-650.0	to 5	up to 3000	120V / 1ph	5	Diesel	330	35 x 47 x 50

STATIONARY HOT WATER GENERATOR SERIES



Model 9452



Model 9462

Heating modules.

The 9400 Series heating modules give customers the flexibility to “convert” a cold water pressure washer into a hot water unit. By attaching the heating module to a cold water pressure washer the pressurized water is now heated to produce all the benefits of hot water cleaning. The four models use fuel oil, diesel or natural gas to heat the water using Kärcher’s high-efficiency, vertical heating coil.



Features

- Fuel burner types available: diesel, kerosene, home heating oil, natural gas, LP gas (optional)
- All models are equipped with a flow switch to control the burner
- Heavy-duty, steel cabinet

TECHNICAL DATA

Model	Part No.	GPM	PSI	Volt / PH	CC	BTU / Hour	AMP	Fuel	Ship Weight (lbs)	Ship Dimensions (L x W x H) Inches
9450	1.103-905.0	10	3200	115/1	389	700,000	8	Oil-Fired	525	32.5 x 25 x 50.5
9452	1.103-906.0	10	3200	115/1	479	540,000	1	Natural - Gas- Fired	500	32.5 x 25 x 50.5
9460	1.103-907.0	10	3200	115/1	688	920,000	8	Oil-Fired	920	40.5 x 32 x 65
9462	1.103-908.0	10	3200	115/1	688	920,000	1	Natural - Gas- Fired	935	40.5 x 32 x 65

OPTIONS (FIELD INSTALLED)

Order No.	Description
<input type="checkbox"/> 8.903-076.0	Natural-Gas to LP Conversion for Model 9452 (Factory Installed)
<input type="checkbox"/> 8.903-075.0	Natural-Gas to LP Conversion for Model 9462 (Factory Installed)
<input type="checkbox"/> 9.801-040.0	10" Natural Gas-Fired Draft Diverter for Model 9452
<input type="checkbox"/> 8.717-730.0	12" Natural Gas-Fired Draft Diverter for Model 9462
<input type="checkbox"/> 8.749-806.0	10" Power Dampener
<input type="checkbox"/> 8.753-171.0	12" Power Dampener
<input type="checkbox"/> 8.749-807.0	Power Dampener Wiring Harness

■ Included Optional

MISSISSIPPI RECOVERY



Siphon muddy waters away.

Stop wash water from flowing down a drain or away from your area by collecting the wastewater from pressure washing. As EPA laws become more prevalent and strive to conserve water quality, contract cleaners and construction sites will need to recover their wash water and runoff. Eliminate the problem with the Mississippi Recovery series that is capable of recovering and transferring up to 30 GPM of water and transferring to a holding tank. Its small footprint allows the Mississippi to be mounted on a trailer. Be fully in control of water flow with the optional water dikes and drain covers to stop water from flowing down a drain or away from your site. Comes standard with 50' feet of vacuum hose and a scupper head.



Features

- 3 stage vacuum motor delivers 100 CFM 100" sealed lift vacuum
- Simple curbside controls for easy use
- Rated for water up to 120°F
- Compatible with hot water machines and surface cleaners
- Bolt-on mounting system configured on the base to mount to a trailer for portability from site to site or optional caster wheel kit
- Drain port and filter basket together to keep sludge from clogging

TECHNICAL DATA

Model	Part No.	Electrical	Tank	Vac Motor	AMP	Recovery	Ship Weight (lbs)	Ship Dimensions (L x W x H) Inches
Mississippi Recovery	1.103-516.0	120V	27 Gallon	3 Stage 100 CFM 100" sealed lift	15	30 GPM	127	24 x 27 x 59

ACCESSORIES

Order No.	Description
■ 8.618-451.0	50' of High Temp 2" Vacuum Hose
■ 8.928-850.0	Scupper Head

OPTIONS (FIELD INSTALLED)

Order No.	Description
<input type="checkbox"/> 9.113-972.0	21" Vac Recovery Surface Cleaner
<input type="checkbox"/> 8.928-887.0	Caster Wheel Kit
<input type="checkbox"/> 8.925-858.0	Vacuum Discharge Hose Kit

DRAIN COVERS AND WATER DIKES

Order No.	Description
<input type="checkbox"/> 8.751-135.0	Drain Cover, 36" x 36", 30oz PVC
<input type="checkbox"/> 8.751-136.0	Drain Cover, 48" x 48", 30oz PVC
<input type="checkbox"/> 8.751-137.0	Drain Cover, 48" x 48", Urethane
<input type="checkbox"/> 8.751-138.0	Water Dike, 10', 22oz PVC
<input type="checkbox"/> 8.751-139.0	Water Dike, 10', 40oz Urethane
<input type="checkbox"/> 8.751-140.0	Water Dike, 20', 22oz PVC
<input type="checkbox"/> 8.751-141.0	Water Dike, 20', 40oz Urethane

■ Included Optional

POWERING A CLEANER FUTURE

We're producing equipment with energy saving lithium-ion batteries which provide longer life, better warranty, more consistent voltage, the ability to opportunity charge, while offering better productivity than lead acid batteries. Let us help you power a cleaner future - for you, your community, the environment and your customers.



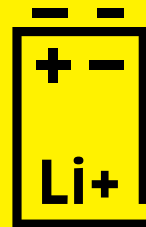
LITHIUM-ION CELLS

**4.8
BILLION**

**8
BILLION**

**MANUFACTURED
IN 2013**

**FORECASTED
BY 2025**



**ON AVERAGE, LITHIUM-ION
BATTERY LIFE IS 6-10 TIMES
LONGER THAN ITS AGM
COUNTERPART.**

EB 30/1



The quick clean-up tool.

This ultra-quiet and compact sweeper is perfect for quick clean-ups in busy and crowded areas. The rechargeable battery pack ensures safety by eliminating trip hazards. The RB 30/1 is built to handle small cleaning jobs in professional working environments.

Designed for high-traffic environments

- Cordless electric sweeper designed for commercial applications.
- Flexible and professional interim clean-up
- Powerful, rechargeable battery provides for up to 45 minutes of operation on hard surface and up to 30 minutes on carpet.
- Extremely quiet operation allows for cleaning even during business hours, making it ideal for use in noise sensitive areas
- Optional high-speed battery charger available for complete charging in 50 minutes.

EB 30/1

TECHNICAL SPECIFICATIONS

Cleaning path	in	12
Container capacity	in ³	67
Operating noise level	dBA	56
Battery runtime	min	30 - 45
Standard battery charge time	hr	1
Weight	lbs	6
Dimensions (L x W x H)	in	10 x 12 x 43

EQUIPMENT

Order No.	Description
1.545-121.0	EB 30/1, lithium-ion battery-operated sweeper

ACCESSORIES

Order No.	Description
■ 6.654-328.0	Lithium-ion battery
■ 6.654-197.0	Quick battery charger for EB 30/1
■ 4.762-400.0	Cylindrical brush
□ 4.762-401.0	Cylindrical stiff red brush, for hard-wearing surfaces

■ Included □ Optional

CVS 65/1 BP



The carpet specialist for different carpet styles.

The CVS 65/1 BP Pack is an impressive battery-operated carpet sweeper. The 36 V lithium-ion battery allows for up to 60 minutes of continuous operation, or 19,375 sq ft, on a single charge. The efficient, two-step filter system comprising of a pre-filter and a PTFE-coated flat pleated filter for dust classes L and M ensures dust-free working, while its low operating noise of just 56 dB(A) also allows for use in noise-sensitive areas.

Optimized sweeping

- High productivity
- Big carpet surfaces can be cleaned up efficiently in short time

36/75 Power+ Battery

- Easily note remaining battery capacity
- Productive and efficient use of the machine
- Possible to run several machines on the same battery platform

CVS 65/1 BP

TECHNICAL SPECIFICATIONS

Cleaning path/width- main broom	in	18
Cleaning path/width with 1 sb	in	26
Side broom diameter	in	10
Debris container capacity	gal	5
Practical productivity	sq. ft/hr	19,375
Operating noise level	dB(A)	56
Sweeping method	direct/overthrow	direct
Weight	lbs	88
Dimensions (LxWxH)	in	30 x 26.5 x 21

EQUIPMENT

Order No.	Description
1.517-302.0	CVS 65/1 Bp Pack

ACCESSORIES

Order No.	Description
■ 2.886-002.0	Main broom antistatic
■ 2.884-355.0	Side brush standard
■ 6.907-449.0	Flat dust filter
□ 5.745-280.0	Pre-filter
□ 5.032-196.0	Homebase bag
□ 2.884-358.0	Set of 10 disposal bags

■ Included □ Optional

KM 70/20 C



Superior performance with manual power.

Speedy sweeping and painless maintenance rolled into one convenient package. This sweeper provides superior sweeping performance in a compact manual push sweeper. It is built to be rugged and durable for long life.

Fast and efficient

- Push sweepers are the easy way to clean paths, halls, sidewalks and warehouses quickly and conveniently.
- Main cylindrical brush is driven by both wheels so that it sweeps equally well in either right or left turns.

Built to last

- Rugged metal pinion drive for long life.
- Durable design

Easy to use

- Height of cylindrical brush can be easily adjusted in five positions by a knob on the handle.

KM 70/20 C

TECHNICAL SPECIFICATIONS

Cleaning path/width- main broom	in	19
Cleaning path/width with 1 sb	in	28
Cleaning path/width with 2 sb	in	36
Side broom diameter	in	13
Debris container capacity	gal	11
Practical productivity	sq. ft/hr	30,000
Weight	lbs	50.7
Dimensions (LxWxH)	in	51.2 x 30.14 x 40.7

EQUIPMENT

Order No.	Description
1.517-106.0	KM 70/20 C, twenty eight inch walk-behind sweeper
1.517-107.0	KM 70/20 C 2SB, thirty six inch walk-behind sweeper, dual brushes

ACCESSORIES

Order No.	Description
■ 6.966-005.0	Side broom, water-resistant bristles, extremely durable, suitable for all types of surfaces
■ 6.906-041.0	Main broom, water-resistant bristles, extremely durable, suitable for all types of surfaces
■ 4.040-772.0	Dust Filter
□ 2.640-908.0	Litter picker—for picking up waste

■ Included □ Optional

KM 70/30 C BP ADV



Efficient sweeping on hard or soft floors.

Fast and efficient for sweeping indoors or outdoors—on hard floor or carpet for those that need to get the job done right the first time. Rely on this sweeper to make quick work of any sweeping needs with its highly productive electronic driven broom. It also features active dust control for optimum air quality. User-friendly features such as an easy adjust broom height and an adjustable handle height make this a popular machine with those who use it.

Productive sweeping

- Delivers fast, efficient sweeping for hard and soft floor surfaces
- 28 inch cleaning path

We thought of you

- For a wide range of applications indoors and outdoors, with a particularly quiet battery drive system at 69 dBA.
- Features Active Dust Control with a separate fan and flat pleated filter for dustless sweeping indoors
- Simple adjustment of the main cylindrical broom and side broom.

KM 70/30 C BP ADV

TECHNICAL SPECIFICATIONS

Cleaning path/width- main broom	in	19
Cleaning path/width with 1 sb	in	28
Side broom diameter	in	13
Debris container capacity	gal	11
Practical productivity	sq. ft/hr	30,800
Operating noise level	dBa	59
Sweeping method	direct/overthrow	direct
Weight	lbs	105.8
Dimensions (LxWxH)	in	48.8 x 28 x 45.2

EQUIPMENT

Order No.	Description
1.517-218.0	KM 70/30 C Bp Adv, twenty eight inch walk-behind sweeper

ACCESSORIES

Order No.	Description
■ 6.966-005.0	Side broom, water-resistant bristles, extremely durable, suitable for all types of surfaces
■ 6.906-041.0	Main broom, water-resistant bristles, extremely durable, suitable for all types of surfaces
■ 6.904-367.0	Flat dust filter
□ 2.640-908.0	Litter picker—for picking up waste
□ 5.731-625.0	Filter element - plastic filter, water resistant, washable, saves maintenance costs
□ 6.907-041.0	Standard cylindrical broom - water-resistant universal bristles, extremely durable, suitable for all types of surfaces.

■ Included □ Optional

KM 75/40 W BP



Self-propelled for increased productivity.

Big enough to get the job done, but maneuverable to clean congested areas, count on the KM 75/40 W Bp for your sweeping needs. This machine provides the versatility to clean anywhere—carpet or hard floors, indoors or out. We built it to perform day in and day out in the toughest commercial applications.

Highly productive

- Cleans effectively indoors and out for increased versatility
- Self-propelled, 30 inch cleaning path for increased productivity
- Easy to understand controls increase operator effectiveness
- Over throw sweeping system with an easily removed hopper make emptying quick and efficient

Improved air quality

- Active dust control system provides better air quality
- Air is vacuumed through a high-efficiency automotive style filter
- Manual filter shaker for easy cleaning and consistent results
- Wet-sweep bypass for cleaning wet surfaces



KM 75/40 W BP

TECHNICAL SPECIFICATIONS

Cleaning path/width- main broom	in	22
Cleaning path/width with 1 sb	in	30
Side broom diameter	in	16.5
Debris container capacity	gal	10.5
Practical productivity	sq. ft/hr	36,328
Operating noise level	dBA	64
Sweeping method	direct/overthrow	overthrow
Weight	lbs	172
Dimensions (LxWxH)	in	56 x 30 x 46.5

EQUIPMENT

Order No.	Description
9.840-739.0	KM 75/40 W Bp, thirty inch walk-behind sweeper

ACCESSORIES

Order No.	Description
■ 8.631-173.0	Battery, 12V AGM 70 Ah
■ 8.629-377.0	Automatic shelf charger, 24V, 24A, 115V, standard on AGM models
■ 6.905-626.0	Side Broom, Soft Bristle
■ 6.906-884.0	Main Broom
■ 5.731-635.0	Flat pleated filter—plastic filter, water resistant, washable, reduces maintenance costs
□ 6.905-625.0	Side broom, hard for heavy-duty cleaning
□ 6.906-885.0	Main Broom, Hard Bristle
□ 6.906-950.0	Anti-Static Rolling Brush
□ 2.641-571.0	Carpet Sweeping Kit (includes fluff filter, anti-static cylindrical brush and triple caster)
□ 6.906-886.0	Main cylindrical broom, soft/natural - specifically designed with natural bristles for sweeping fine dust on smooth indoor floors.

■ Included □ Optional

KM 85/50 R BP



Compact, agile and intuitive.

The KM 85/50 R Bp is a battery-powered ride-on sweeper perfect for confined and congested areas. Its compact design and high maneuverability make cleaning faster than ever in narrow corridors and around sharp corners. It is extremely easy to operate and maintain, and boasts impressive area performance outdoors.

Efficient filter system

- Polyester flat pleated filter
- Effective cleaning with dual scraper

Ergonomic design for enhanced performance and comfort

- Clear and simple operation for all components
- Easy, tool-free seat adjustment for operator comfort
- Adjustable rotation speed depending on type of dirt
- Drives through door openings as narrow as 36"



KM 85/50 R BP

TECHNICAL SPECIFICATIONS

Cleaning path/width- main broom	in	24.2
Cleaning path/width with 1 sb	in	33.5
Cleaning path/width with 2 sb	in	41.3
Side broom diameter	in	16.5
Debris container capacity	gal	13.2
Practical productivity - 1 / 2 sb	sq. ft/hr	32,940 / 40,685
Operating noise level	dBA	69
Sweeping method	direct/overthrow	direct
Weight	lbs	555
Dimensions (LxWxH)	in	50 x 35 x 46

EQUIPMENT

Order No.	Item Description
9.841-453.0	KM 85/50 R Bp Wet, 1 side broom, shelf charger
9.841-454.0	KM 85/50 R Bp AGM, 1 side broom, shelf charger

ACCESSORIES

Order No.	Item Description
■ 4.762-430.0	Main brush, standard
■ 6.906-132.0	1-side brush, standard
■ 6.435-773.0	Pneumatic tire (1 each)
■ 5.731-585.0	Flat Filter complete
□ 6.435-431.0	Solid rubber non-marking wheel
□ 4.762-442.0	Main brush, soft
□ 4.762-443.0	Main brush, hard
□ 4.762-441.0	Main brush, antistatic
□ 6.905-626.0	Side brush, soft
□ 6.905-625.0	Side brush, hard
□ 2.852-499.0	Carpet cleaning kit
□ 2.852-321.0	Additional left side brush kit
□ 2.852-500.0	Warning beacon
□ 5.035-488.0	Home Base kit (adapter and cable hook)
□ 6.980-077.0	Double Hook (requires 5.035-488.0)

■ Included □ Optional

KM 90/60 R BP ADV



Built for tough environments.

Sweep large areas quickly with this highly maneuverable, ride-on sweeper that increase productivity and safety. This machine cleans multiple surfaces, from tough industrial flooring to soft carpet. Its innovative Tact filter cleaning system extends the filter life, saving you money.

Highly productive sweeping

- Automatic, continuous sweeping
- Overthrow sweeping



KM 90/60 R BP ADV

TECHNICAL SPECIFICATIONS

Cleaning path/width- main broom	in	24.2
Cleaning path/width with 1 sb	in	35.4
Cleaning path/width with 2 sb	in	45.3
Side broom diameter	in	16.5
Debris container capacity	gal	16
Practical productivity - 2 sb	sq. ft/hr	47,520
Operating noise level	dBA	69
Sweeping method	direct/overthrow	direct
Weight	lbs	782
Dimensions (LxWxH)	in	64 x 38.5 x 49.5

EQUIPMENT

Order No.	Description
9.841-246.0	KM 90/60 R Bp Adv, 1SB, 2 x 12V/225 Ah wet batteries, shelf charger
9.841-247.0	KM 90/60 R Bp Adv, 1SB, 2 x 12V/234 Ah AGM batteries, shelf charger
9.841-248.0	KM 90/60 R Bp Adv, 2SB, 2 x 12V/225 Ah wet batteries, shelf charger
9.841-249.0	KM 90/60 R Bp Adv, 2SB, 2 x 12V/234 Ah AGM batteries, shelf charger

ACCESSORIES

Order No.	Description
■ 4.762-430.0	Main broom
■ 6.906-132.0	Side broom
■ 6.907-519.0	TACT Filter (2 required)
□ 5.035-488.0	Home Base kit (adapter and cable hook)
□ 6.980-078.0	Mop clip (requires 5.035-488.0)
□ 6.980-080.0	Bottle Hook (requires 5.035-488.0)
□ 6.907-023.0	Anti-static rolling brush
□ 4.762-443.0	Main cylindrical brush, hard
□ 4.762-442.0	Main cylindrical brush, soft/natural
□ 6.905-625.0	Side broom, hard for heavy-duty cleaning
□ 2.642-693.0	Side brush kit, left
□ 2.851-334.0	Carpet sweeping kit (includes anti-static rolling brush)
□ 2.642-989.0	Warning beacon revolving signal light
□ 6.414-532.0	Round filter - plastic filter, water-resistant, washable, saves maintenance costs. (Fits previous KM 90/60 R Bp without Tact)
□ 4.762-442.0	Main cylindrical brush, soft/natural-with natural bristles, ideal for sweeping fine dust on smooth surfaces both indoors and outdoors
□ 8.622-843.0	Battery pack 234 Ah AGM, 3 required

■ Included □ Optional

PUZZI™ 8/1 C



Handy and compact for easy spot cleaning.

The handy, compact and powerful Puzzi™ 8/1 C spray extraction cleaner is ideal for small areas and interim cleaning with excellent cleaning results.

Easy to use

- Foot switch makes it easy to turn on and off – no bending required.
- Transparent dome lid for easy-to-verify operation.

Easy to transport

- Swivel casters for easy maneuvering.
- Lightweight – at less than 20 lbs., it can be carried up and down stairs without strain.

Smart features

- 8' high-pressure solution and vacuum hose
- Removable dirty water tank.

PUZZI™ 8/1 C

TECHNICAL SPECIFICATIONS

Solution/recovery capacity	gal	2.1/1.8
Operating noise level	dBA	71
Power cord length	ft	33
Vacuum	hp, stage	1.5 hp
Water lift	in	88
Pump pressure	psi	14.5 - 43.5
Flow rate	gpm	0.26
Weight	lbs	22
Dimensions (L x W x H)	in	22.5 x 13 x 17.3

EQUIPMENT

Order No.	Description
1.100-228.0	Puzzi™ 8/1 C, with 98-inch spray hose with integrated water feed and hand tool

ACCESSORIES

Order No.	Description
■ 6.391-410.0	8-foot hose, complete with couplings
■ 4.130-116.0	4-inch upholstery hand tool
□ 4.130-127.0	Floor wand, 2-part with aluminum tube
□ 4.130-394.0	Floor wand, quick-action coupling, aluminum tube and metal nozzle
□ 4.762-220.0	Hard surface kit (attaches to 4.130-127.0 & 4.130-394.0 wands)
□ 2.638-778.0	Window cleaning kit with 6.5Ft hose, (requires 2.389-293.0 coupler)
□ 4.130-083.0	Venetian blind kit (requires 6.389-293.0 coupler)
□ 4.130-444.0	Stair cleaning tool, 9-inch
□ 6.391-411.0	13-foot high pressure solution & vacuum hose
□ 4.130-117.0	Stone & hard surface nozzle
□ 4.762-219.0	Hard surface adapter for standard hand tool
□ 4.130-010.0	Crevice nozzle
□ 4.130-007.0	Carpet nozzle set 240 mm

■ Included □ Optional

BRC 30/15 C



Compact, fast and simple extraction.

Get acquainted with the faster, simpler solution for small area extraction. The BRC 30/15 C is designed to productively clean carpet with less effort, resulting in time-saving productivity gains. In interest of simplicity this machine requires minimal service. It is lightweight and compact for ease of use and transportability.

Compact deep cleaning solution

- High performance vacuum motor for faster drying time

Extraction is no sweat

- Quiet, lightweight, easy to use
- Designed for minimal service

Portable and mobile

- Large 10 inch non-marking wheels for easy transport and maneuverability
- Fold-down handle for easy transportation in any vehicle

BRC 30/15 C

TECHNICAL SPECIFICATIONS

Cleaning path/width	in	10.5
Solution/recovery capacity	gal	4.5/4
Operating noise level	dBa	77
Power cord length	ft	25
Vacuum	hp, stage	1.5, 3
Water lift	in	120
Pump pressure	psi	26
Flow rate	gpm	0.38
Weight	lbs	79
Dimensions (L x W x H)	in	23 x 14 x 28

EQUIPMENT

Order No.	Description
1.008-058.0	BRC 30/15 C, 4 gallon carpet extractor

ACCESSORIES

Order No.	Description
■ 8.621-604.0	Brush, chevron, 10-inch
■ 8.629-552.0	Brush, extractor, natural bristles
■ 8.631-030.0	Assembly, adapter (1/8"m x 1/4" fpt nipple)
□ 8.629-036.0	Hose and hand tool kit, bag Included
□ 8.600-075.0	Adapter 1/8 to 1/4 quick-disconnect for accessory solution hose

■ Included □ Optional

CADET™ 7



Nothing matches the value and ease-of-use of the Cadet™ 7 self-contained extractor.

It is easy to see why the Cadet™ 7 is such a popular extractor. It has proven itself as a reliable, robust machine that deep cleans carpets to like-new. Operator controls are intuitive and ergonomic for hours of pain-free operation.

Brilliant deep clean

- Efficiently deep cleans carpet
- Floating vacuum shoe for superior recovery

Unmatched value

- The deep cleaning value choice
- Robust design built for reliability

Easy-to-use

- No-hose design makes it simple to fill and empty
- Ergonomic design reduces operator fatigue

CADET 7

TECHNICAL SPECIFICATIONS

Cleaning path/width	in	15
Solution/recovery capacity	gal	7/7
Practical productivity	sq.ft/hr	2,100
Operating noise level	dBa	69
Power cord length	ft	50
Vacuum	hp, stage	1.5, 3
Water lift	in	120
Pump pressure	psi	90
Flow rate	gpm	0.57
Weight	lbs	87
Dimensions (L x W x H)	in	41 x 17.5 x 34

EQUIPMENT

Order No.	Description
1.008-022.0	Cadet™ 7, seven gallon carpet extractor

ACCESSORIES

Order No.	Description
<input type="checkbox"/> 9.808-240.0	Air quality MicroFilter™ kit for Clipper™ 12/Admiral™ 8/Cadet™ 7, includes 2 filters and stainless steel bracket
<input type="checkbox"/> 8.623-611.0	One air quality MicroFilter™ refill
<input type="checkbox"/> 8.623-411.0	Power cord

■ Included □ Optional

NT 22/1 AP BP



Cordless, quiet, and lightweight.

The NT 22/1 Ap Bp is the first wet/dry vac in the market that offers professional suction performance in a battery machine. It has the same air flow as the equivalent corded machine - unprecedented in the cleaning and power tool industry. Its compact design and low weight make it the ideal wet and dry vac for all mobile applications. Whether for BSC customers, in hotels, retail outlets, in the car cleaning business or for craftsmen: this machine offers unlimited mobility since users can now do their work independent of power socket availability.

Productive & lightweight

- Equipped with powerful 36V, 7.5 Ah Battery Power+ battery and fast charger - only 50-80 minutes to a full charge
- Low weight and compact dimensions for outstanding mobility
- Semi-automatic filter cleaning system for uninterrupted working
- Flat pleated filter guarantees high usable container volume
- Dust class L certification (99.0% efficiency)

NT 22/1

TECHNICAL SPECIFICATIONS

Vacuum width, floor tool	in	12
Vacuum hose length	ft	6.2
Battery runtime	min	31
Waste container capacity	gal	5.8
Operating noise level	dba	71
Air flow rate	cfm	121
Waterlift	in of water	61
Weight	lbs	19.4
Dimensions (LxWxH)	in	16 x 15 x 20

EQUIPMENT

Order No.	Description
1.528-128.0	NT 22/1 Ap Bp

ACCESSORIES

Order No.	Description
■ 2.445-053.0	Battery+ 36/75
■ 2.445-075.0	Fast battery charger
■ 6.904-156.0	Flat pleated filter
■ 6.907-469.0	Fleece filter bag - pack of 5 (1 included with machine)
■ 2.889-263.0	Floor tool
■ 2.889-218.0	Suction tube set
■ 2.889-159.0	Crevice nozzle
■ 2.889-199.0	Elbow
□ 2.889-134.0	Vacuum hose, 8.2 feet (6.2 ft hose not sold separately)

■ Included □ Optional

NT 25/1 AP



Mobile, all-purpose vacuuming.

The NT 25/1 AP delivers powerful wet/dry cleaning in one compact package. This mobile all-purpose vacuum is easy and comfortable to transport to any job site. Designed for function, our vacuum features a light weight construction. Enjoy knowing that you can pick up anything wet or dry with this handy, practical machine.

Portable & Practical

- Comfortable and easy to handle
- Five caster wheel design provides superior movement and stability
- Complete accessory holder and cord hook
- On-board accessory storage
- Convenient additional storage area on the turbine head
- Mobile and lightweight, perfect for transport to multiple locations
- Easy, safe and quickly exchangeable clip hose connections
- Ergonomically designed hose for operator comfort

NT 25/1 AP

TECHNICAL SPECIFICATIONS

Vacuum width, floor tool	in	11
Vacuum hose length	ft	8
Power cord length	ft	25
Waste container capacity	gal	6.6
Operating noise level	dB(A)	70
Air flow rate	cfm	123
Waterlift	in of water	88
Motor	watts	1,170
Weight	lbs	24
Dimensions (LxWxH)	in	20 x 14.5 x 19

EQUIPMENT

Order No.	Description
1.184-868.0	NT 25/1 AP, 6.6 gallon wet / dry vacuum

ACCESSORIES

Order No.	Description
■ 4.440-626.0	Suction hose C DN35
■ 6.906-240.0	Crevice nozzle DN35
■ 6.903-284.0	Floor tool DN35
■ 6.900-514.0	Suction tube DN35
■ 6.907-478.0	Set of 5 filter bags - fleece 25L

■ Included □ Optional

NT 30/1 TACT TE



Stronger and sturdier than ever.

This powerful vacuum cleaner picks up coarse dirt and liquids as well as large quantities of fine dust. Tact, the fully automatic cleaning system, cleans the filter with strong air blasts. It is ideal for long periods of uninterrupted use and constant high suction power. It is fully compliant with OSHA silica dust regulations.

Tact system (Auto Filter Clean System)

- Blasts of air clean the filter resulting in lower maintenance costs and a longer filter life ultimately saving you money.

Convenient and easy to use

- On-board storage for all accessories, includes two hooks for the suction hose and power cord.
- No filters to install or remove
- Bayonet and clip connections guarantee easy and secure connection of all accessory parts to the vacuum.



NT 30/1 TACT TE

TECHNICAL SPECIFICATIONS

Vacuum width, floor tool	in	14
Vacuum hose length	ft	13
Power cord length	ft	25
Waste container capacity	gal	8.2
Operating noise level	dB(A)	68
Air flow rate	cfm	150
Waterlift	in of water	102
Motor	watts	1,380
Weight	lbs	30
Dimensions (LxWxH)	in	22 x 14.5 x 22.2

EQUIPMENT

Order No.	Description
1.148-216.0	NT 30/1 Tact Te, 8-gallon wet/dry vacuum with Tact

ACCESSORIES

Order No.	Description
■ 2.889-192.0	Stainless steel vacuum tube set
□ 2.889-135.0	Vacuum hose 13 ft
■ 2.889-134.0	Vacuum hose 8 ft
■ 2.889-170.0	Ergonomic bend
■ 2.889-152.0	Wet and dry floor nozzle
■ 2.889-159.0	Crevice nozzle
■ 2.889-151.0	Power tool adapter
■ 2.889-154.0	Fleece filter bags - 30 liter
■ 6.907-629.0	HEPA filter

■ Included □ Optional

NT 48/1



A tough and versatile clean.

This machine is a tough and versatile wet/dry vacuum. Built to handle difficult wet or dry dirt, this vac is the machine that will stand up to tough everyday use. The optional front mounted squeegee provides even more productive water pickup. The large filter provides impressive suction power and long work intervals improving your productivity.

Portable

- Mobile, all-purpose wet/dry vacuum for small to medium jobs and multiple locations.
- Integrated handle ensures easy and comfortable transport.

Real-world convenience

- Optional front mounted squeegee for more productive pickup.

NT 48/1

TECHNICAL SPECIFICATIONS

Vacuum width, floor tool	in	12
Vacuum hose length	ft	8
Power cord length	ft	25
Waste container capacity	gal	12
Operating noise level	dBa	72
Air flow rate	cfm	142
Waterlift	in of water	80
Motor	watts	1,380
Weight	lbs	22
Dimensions (LxWxH)	in	19 x 15.3 x 30.3

EQUIPMENT

Order No.	Description
1.428-623.0	NT 48/1, 13-gallon wet/dry vacuum
9.840-844.0	NT 48/1, 13-gallon wet/dry vacuum with front mounted squeegee

ACCESSORIES

Order No.	Description
■ 6.414-789.0	Cylindrical Dust Filter
■ 6.904-285.0	Paper filter bag (5-pack, 1 bag Included with machine)
■ 6.906-512.0	All-Purpose Nozzle
■ 6.900-385.0	8.3-inch all purpose crevice nozzle
■ 4.440-626.0	8 feet x 1.375 inch hose with comfortable hand grip
■ 6.900-514.0	Metal suction tube, 1.4 inch X 1.6 feet
■ 6.906-240.0	Crevice nozzle, 1.4-inch
□ 6.904-211.0	Wet Filter Bag
□ 6.906-384.0	14.6" Aluminum All-Purpose Nozzle with Height-Adjustable Cylindrical, Brush Strips and Oil Resistant Squeegees
□ 6.907-409.0	10.2-inch plastic all-purpose nozzle
□ 6.907-408.0	14.2-inch plastic all-purpose head with cylindrical, brush strips and standard squeegee
□ 6.906-383.0	17.7" Aluminum All-Purpose Head with Height-Adjustable cylindrical, Brush Stripes and oil-resistant Squeegees
□ 2.860-113.0	Upholstery hand tool
□ 2.860-114.0	10-inch turbo nozzle with reducer 35/32
□ 6.903-033.0	11.4" Crevice Tool
□ 6.905-988.0	4.7" Plastic Upholstery Nozzle, 35 mm ID
□ 6.903-034.0	Radiator Brush for use with 6.900-385.0
□ 6.903-035.0	Plastic, Pipe Diameter 3.9"
□ 6.903-862.0	Suction Brush, Natural Hair, Pivotal, 35 mm ID
□ 2.860-116.0	Nozzle Set, Crevice Tool, Upholstery Tool, Round Brush, 35 mm ID
□ 2.863-147.0	All-Purpose Brush, Soft Bristles 35 mm ID
□ 8.622-960.0	Replacement 15-inch squeegee blade

■ Included □ Optional

NT 68/1



Utility with ease.

Easily tackle medium to large jobs with this wet/dry vac. Designed with a robust 1.8 hp vac motor to handle any task you throw at it. If even more productivity is desired, the optional front mounted squeegee makes quick work of water recovery. Thoughtful features such as no-tipping dumping and on-board storage make this the operator's choice for wet/dry vacs.

Performance

- Optional front-mounted squeegee offers more productive water pick-up
- 18 gallon capacity offers easy mobility for medium to large jobs

Thoughtful design

- Complete with on-board tool storage compartment with safety sign storage bracket
- Self-adjusting squeegee assembly

NT 68/1

TECHNICAL SPECIFICATIONS

Vacuum width, floor tool	in	24.5
Power cord length	ft	50
Waste container capacity	gal	18
Operating noise level	dB(A)	71
Air flow rate	cfm	142
Waterlift	in of water	80
Motor	watts	1,200
Weight	lbs	64
Dimensions (LxWxH)	in	35.5 x 24.5 x 37.5

EQUIPMENT

Order No.	Description
1.103-494.0	NT 68/1, eighteen gallon wet/dry vacuum with 24" front squeegee, with tools
1.103-495.0	NT 68/1, eighteen gallon wet/dry vacuum with 24" front squeegee
1.013-021.0	NT 68/1, eighteen gallon wet/dry vacuum with hose and wand only

ACCESSORIES

Order No.	Description
<input type="checkbox"/> 5.731-595.0	Cartridge Filter (Wet)
<input type="checkbox"/> 6.414-552.0	Cartridge Filter (Dry)
<input type="checkbox"/> 6.900-385.0	8.3-inch all purpose crevice nozzle
<input type="checkbox"/> 6.906-240.0	Crevice nozzle, 1.4-inch
<input type="checkbox"/> 6.906-384.0	14.6" Aluminum All-Purpose Nozzle with Height-Adjustable Cylindrical, Brush Strips and Oil Resistant Squeegees
<input type="checkbox"/> 6.907-409.0	Floor tool package: 10.2-inch plastic all-purpose nozzle, basalt grey
<input type="checkbox"/> 6.903-018.0	14.6" Aluminum All-Purpose Head with Height-Adjustable Cylindrical, Brush Stripes and squeegee blades
<input type="checkbox"/> 6.907-408.0	Floor tool package: 14.2-inch plastic all-purpose head with cylindricals, brush strips and standard squeegee, basalt grey
<input type="checkbox"/> 6.906-383.0	17.7" Aluminum all-purpose head with height-adjustable cylindrical, brush stripes and oil-resistant Squeegees
<input type="checkbox"/> 2.860-113.0	Upholstery hand tool
<input type="checkbox"/> 2.860-114.0	10-inch turbo nozzle with reducer 35/32
<input type="checkbox"/> 6.903-033.0	11.4" Crevice Tool
<input type="checkbox"/> 6.900-922.0	14.6" Crevice Nozzle, Metal
<input type="checkbox"/> 6.902-154.0	Wand
<input type="checkbox"/> 8.635-292.0	Front mount squeegee assembly
<input type="checkbox"/> 6.906-512.0	Squeegee head

■ Included □ Optional

BV/VAC PAC™ HEPA SERIES



Breathe easy with HEPA filtration.

The BV/VAC PAC HEPA series are portable back mounted vacuums great for increasing productivity, efficiency, while saving you money. Breathe easier with HEPA-level filtration standard on these vacuums. They also have an ergonomic harness system, allowing the operator to move around quickly and easily for maximum productivity.

Meets your needs

- HEPA filtration is now standard, providing optimum air quality by filtering with 99.9% effectiveness to 0.3 microns
- Vacuum hose is a top-mounted swivel design for left-hand and right-hand operation



BV 7/1 VAC PAC 6 HEPA

BV 11/1 VAC PAC 10 HEPA

TECHNICAL SPECIFICATIONS

Specification	Unit	BV 7/1 VAC PAC 6 HEPA	BV 11/1 VAC PAC 10 HEPA
Vacuum width, floor tool	in	13	13
Vacuum hose length	ft	60	60
Power cord length	ft	50	50
Waste container capacity	qt	6	10
Operating noise level	dBa	67	67
Air flow rate	cfm	112	112
Waterlift	in of water	104	104
Motor	watts	1,200	1,200
Weight	lbs	10	11
Dimensions (LxWxH)	in	8.5 x 8.8 x 19.8	8.5 x 8.8 x 23.7

EQUIPMENT

Order No.	Description
1.014-013.0	BV 7/1 VAC PAC 6 HEPA backpack vacuum, 6 qt. (includes hose and tool kit)
1.014-014.0	BV 11/1 VAC PAC 10 HEPA backpack vacuum, 10 qt. (includes hose and tool kit)

ACCESSORIES

Order No.	Description
■ 8.628-666.0	Wand, 2 PC Aluminum Double Curve
■ 8.619-894.0	Hose Assembly
■ 8.639-285.0	HEPA pleated filter
■ 8.619-884.0	Cloth bag for VAC PAC™ HEPA 10 / BV 11/1
■ 8.619-885.0	10-quart paper bags, 10-pack for BV 11/1
■ 8.619-891.0	Paper bags for VAC PAC™ HEPA 6 / BV 7/1
■ 8.619-890.0	Cloth bags for VAC PAC™ HEPA 6 / BV 7/1
■ 8.619-887.0	Filter Dome
■ 8.604-141.0	VAC PAC™ tool kit (#02293 crevice tool, #02083 dusting brush, #02084 upholstery tool, #02085 upholstery tool brush, #02086 extension tube)
□ 8.628-451.0	Crevice Tool
□ 8.600-008.0	5" Upholstery Tool
□ 8.628-360.0	Upholstery Brush
□ 8.600-007.0	3-inch dusting tool with adapter
□ 8.628-445.0	Tool, Carpet
□ 8.628-444.0	Tool, bristle shod dry pick-up
□ 8.619-876.0	VAC PAC™ Crevice Tool
□ 8.631-254.0	Harness assembly for VAC PAC™ HEPA 6 & 10 and BV 11/1
□ 8.642-914.0	15" sidewinder carpet tool with 1.5" neck
□ 8.642-915.0	15" sidewinder hard floor brush with 1.5" neck
□ 8.642-916.0	18" sidewinder carpet tool with 1.5" neck
□ 8.642-917.0	18" sidewinder hard floor brush with 1.5" neck

■ Included □ Optional

CV 300



The sanitary choice that lasts.

Many of our competitors sell low-cost upright vacuums, the only problem is that they fall apart quickly and then you are left with another broken vac to toss in the dump. If you are tired of throwing away your money then consider our CV 300 upright vacuum. The CV 300 provides power, reliability, and clean air quality all for a price that will not break the bank. This model features a traditional non-steerable joint between the base and the body for ergonomics and all-day usability.

Sturdy and robust

- Built to last for years. The reliable, affordable upright vac.
- Lower total cost of ownership

Breathe easier

- CRI approved for cleaner, healthier carpets



CV 300

TECHNICAL SPECIFICATIONS

Cleaning path	in	12
Productivity (practical)	ft ² /hr	3,104
Power cord length	ft	40
Operating noise level	dBA	69.5
Air flow rate	cfm	102
Voltage	110v/220v	110V
Motor	hp	0.24
Debris bag size	qt	3.7
Dimensions (LxWxH)	in	11 x 12 x 48
Weight	lbs	17

EQUIPMENT

Order No.	Item Description
1.012-059.0	CV 300, 120V/60 Hz

ACCESSORIES

Order No.	Description
■ 8.632-214.0	Filter, exhaust
■ 8.628-477.0	Filter, motor protection
■ 8.630-933.0	Vacuum fan exhaust filter
□ 8.600-495.0	12-Inch replacement double row brush
□ 8.628-479.0	3-Ply filter dust bags, 10-pack
□ 8.633-398.0	Filter bag, package of 10
□ 8.634-975.0	Tool, 20" extension tool
□ 8.632-244.0	Tool, clips for tools, dark gray
□ 8.632-245.0	Tool, crevice tool, dark gray
□ 8.614-100.0	Dusting brush, dark gray
□ 8.614-629.0	Upholstery nozzle, dark gray
□ 8.604-147.0	Vacuum tools kit (crevice nozzle, upholstery nozzle, and mounting clip)

■ Included □ Optional

BR 35/12 C BP



The race is always won in the corners.

Thanks to our innovative steerable scrub deck, the BR 35/12 C Bp can clean up to the wall at a 90° angle. It can also clean in reverse, or in any direction. The height-adjustable, telescoping steering column allows optimal ergonomics for any operator. The folding steering column also makes it easy to secure for transport.

Steer your way to cleaner floors

- Our innovative steerable scrub deck allows for scrubbing in any direction, and provides perfect scrubbing right up to the edge.
- The telescoping handle adjusts to any operator's height
- Brush height is adjustable for multiple floor types
- Kärcher's unique ecoefficiency mode features increases operating time by 50%, and reduces noise by 40%.



BR 35/12 C BP

TECHNICAL SPECIFICATIONS

Cleaning path/width	in	14
Brush type	cylindrical/disc/pad	cylindrical
Brush quantity	units	1
Brush diameter	in	3.8
Suction bar (squeegee) width	in	18
Drive	pad-assist/traction	brush-assist
Solution/recovery capacity	gal	3/3
Theoretical/practical productivity	sq. ft/hr	11,000/6,600
Operating noise level - std/Eco! mode	dBA	66/62
Battery charger	shelf/on-board	on-board
Battery runtime - std/Eco! mode	min	66/90
Battery charging time	hrs	1-3
Battery lifetime-est charging cycles	x thousands	3
Brush contact pressure	lbs	29
Brush speed	rpm	700-1,050
Vac motor rating	watts	280
Vac motor suction	cfm	42
Waterlift	in of water	32
Weight with batteries	lbs	77
Dimensions (LxWxH)	in	39 x 18 x 51

EQUIPMENT

Order No.	Description
1.783-470.0	BR 35/12 C Bp, fourteen inch scrubber with cylindrical brushes

ACCESSORIES

Order No.	Description
■ 4.037-031.0	Cylindrical Brush, red, medium
□ 4.037-036.0	Cylindrical Brush, white, soft
□ 4.037-037.0	Cylindrical Brush, orange, high/low
□ 4.037-038.0	Cylindrical Brush, green, hard
□ 4.037-039.0	Cylindrical Brush, black, very hard
□ 4.762-009.0	Cylindrical Pad cylindrical shaft
□ 6.369-053.0	Cylindrical Pads on sleeve, yellow, soft
□ 6.369-047.0	Cylindrical Pads on sleeve, red, medium
□ 6.369-052.0	Cylindrical Pads on sleeve, green, hard
□ 4.037-040.0	Cylindrical microfiber pad, for daily cleaning of delicate surfaces including LVT and stone tile
□ 4.037-127.0	Squeegee blade set, optional, Linatex
■ 4.037-035.0	Squeegee blade set, standard, oil-resistant, polyurethane
■ 6.654-294.0	Lithium-ion battery, 21 Ah

■ Included □ Optional

BD 38/12 C BP



Steer your way to cleaner floors.

Think of the BD 38/12 as a 15 inch disc version of the popular BR 35/12. The design allows for the easiest driving of a walk-behind disc scrubber on the market. The squeegee follows behind the disc to ensure 100% solution pickup even through the corners.

Steerable, innovative disc scrubber

- Extremely agile for efficient cleaning of small and very furnished areas.
- Easy to use—scrub right up to the wall

Real world practicality

- Quick charging lithium-ion battery has a longer lifetime than normal batteries.
- Very compact, light and easy to transport and roll over steps.
- Application also in noise sensitive areas possible due of significantly reduced noise level.

BD 38/12 C BP

TECHNICAL SPECIFICATIONS

Cleaning path/width	in	15
Brush type	cylindrical/disc/pad	disc
Brush quantity	units	1
Brush diameter	in	15
Suction bar (squeegee) width	in	16
Drive	pad-assist/traction	brush-assist
Solution/recovery capacity	gal	3.2/3.2
Theoretical/practical productivity	sq. ft/hr	11,210/6,725
Operating noise level - std/Eco! mode	dBA	65/62
Battery charger	shelf/on-board	on-board
Battery runtime - std/Eco! mode	min	60/120
Battery charging time	hrs	2-3
Battery lifetime-est charging cycles	x thousands	3
Brush contact pressure	lbs	35-46
Brush speed	rpm	180/150
Vac motor rating	watts	280
Vac motor suction	cfm	42
Waterlift	in of water	32
Weight with batteries	lbs	79
Dimensions (LxWxH)	in	37 x 30 x 51

EQUIPMENT

Order No.	Item Description
1.783-431.0	BD 38/12 C, compact scrubber with fifteen inch disc brush

ACCESSORIES

Order No.	Item Description
■ 6.907-151.0	Disc brush, red
■ 6.654-294.0	Lithium-ion battery, 21 Ah
■ 4.037-059.0	Squeegee blades, made from transparent and oil-resistant polyurethane, includes front and rear blade
□ 6.907-150.0	Pad driver plate
□ 6.369-003.0	Red disc pads, set of 5
□ 6.369-002.0	Green disc pads, medium soft, green, set of 5
□ 6.369-001.0	Black disc pads, hard, set of 5
□ 6.905-060.0	Disc microfiber pad, for daily cleaning of delicate surfaces including LVT and stone tile, set of 5

■ Included □ Optional

BD 50/50 C CLASSIC BP



Professional cleaning, now made easier.

This economically-designed scrubber provides you all the cleaning power to take on large jobs—perfect for retail environments, schools and health care facilities.

Easy to use

- Three cleaning modes make it simple for any operator to get the job done right
- The slim design of the Kärcher BD 50/50 allows you to see in front of the scrubber easier
- Home Base kit allows for carrying of other essentials on the machines, for less visits to the supply closet.



BD 50/50 CLASSIC BP

TECHNICAL SPECIFICATIONS

Cleaning path/width	in	20
Brush type	cylindrical/disc/pad	pad
Brush quantity	units	1
Brush diameter	in	20
Suction bar (squeegee) width	in	33
Drive	pad-assist/traction	pad-assist
Solution/recovery capacity	gal	13.2/13.2
Theoretical/practical productivity	sq. ft/hr	21,530/13,995
Operating noise level	dBA	66
Battery charger	shelf/on board	shelf
Brush contact pressure	lbs	59-62
Brush speed	rpm	180
Vac motor rating	watts	500
Vac motor suction	cfm	51
Waterlift	in of water	48
Weight with batteries	lbs	306
Dimensions (LxWxH)	in	47 x 21 x 39

EQUIPMENT

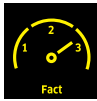
Order No.	Description
9.841-369.0	BD 50/50 C Classic Bp, pad driver, 24V/105 Ah wet batteries
9.841-370.0	BD 50/50 C Classic Bp, pad driver, 24V/100 Ah AGM batteries

ACCESSORIES

Order No.	Description
■ 4.762-534.0	Pad driver, 20 inch, features a quick-change coupling and centerlock
■ 4.777-179.0	V-Shaped squeegee, 900 mm, with caster, polyurethane
□ 6.273-023.0	Replacement Blades V-Shaped Squeegee 1010mm
□ 4.905-029.0	Brush, hard black - For stubborn dirt and basic cleaning. For hard wearing surfaces.
□ 4.905-026.0	Disc brush, medium grit, red, for general cleaning (standard on brush machines)
□ 6.369-079.0	Red disc pad, 20-inch, medium soft red for cleaning all types of floors, 5-pack
□ 6.369-078.0	Green disc pad, 20-inch, aggressive for cleaning heavily soiled floors and for deep cleaning, 5-pack
□ 6.369-077.0	Black pad, 20-inch, hard, for cleaning heavily soiled floors and for deep cleaning, 5 pack
□ 6.369-468.0	Beige disc pad, 20-inch, light grit, for polishing and refreshing of hard and elastic smooth floor coverings, 5 pack
□ 4.777-179.0	Suction bar v-shaped 900mm CN
□ 6.273-023.0	Rubber lip set corrugated oil resistant
□ 6.371-146.0	Beige disc pad, 20 inch, soft, natural hair, for polishing
□ 4.777-401.0	Squeegee, 33.5 inch, straight, made of oil-resistant transparent polyurethane, for smooth floors
□ 5.035-488.0	Home Base kit (adapter and cable hook)
□ 6.980-077.0	Double Hook (requires 5.035-488.0)
□ 4.035-406.0	Home Base kit carrying case
□ 6.980-078.0	Mop clip (requires 5.035-488.0)
□ 6.980-080.0	Bottle Hook (requires 5.035-488.0)
□ 4.070-075.0	Universal hook
□ 8.641-483.0	Charger for wet batteries
□ 8.629-377.0	Charger for AGM batteries

■ Included □ Optional

B 40 W BP



Quiet, compact, innovative and customizable

We built this machine to be easy to operate, safe and easy to maintain. Our Kärcher Intelligent Key (KIK) and our advanced EASY operation are some of the many reasons why the B 40 W family offers a full spectrum of safety and protection for operators, machines and your floors.

Complete control

- 100% control of the speed of your scrub brushes allows you to balance scrubbing power, noise levels and power consumption.

Interchangeable decks

- Choose disc and cylindrical decks from 17 to 22 inches
- Each can be changed quickly and without tools.

		B 40 W DISC	B 40 W CYLINDRICAL
TECHNICAL SPECIFICATIONS			
Cleaning path/width	in	17-20	18-22
Brush type	cylindrical/disc/pad	disc	cylindrical
Brush quantity	units	1	2
Brush diameter	in	17-20	3.75
Suction bar (squeegee) width	in	33.5	33.5
Drive	pad-assist/traction	traction	traction
Solution/recovery capacity	gal	10.6/10.6	10.6/10.6
Theoretical productivity	sq. ft/hr	17,200-21,530	18,210-23,680
Operating noise level - std/Eco! mode	dBa	69/60	69/60
Battery charger	shelf/on-board	on-board	on-board
Brush contact pressure	lbs	135-160	80-86
Brush speed	rpm	180	1,200
Drive / vac motor rating	watts	130/500	130/500
Vac motor suction	cfm	47	47
Waterlift	in of water	48	48
Weight with batteries	lbs	307-384	307-384
Dimensions (LxWxH)	in	49 x 20.5 x 45	49 x 20.5 x 45

EQUIPMENT

Order No.	Description
9.841-372.0	B 40 W Bp, traction drive, R 55 cylindrical scrub deck, 24V/105 Ah wet batteries
9.841-373.0	B 40 W Bp, traction drive, D 51 disc scrub deck, 24V/105 Ah batteries
9.841-374.0	B 40 W Bp, traction drive, R 55 cylindrical scrub deck, 24V/138 Ah AGM batteries
9.841-375.0	B 40 W Bp, traction drive, D 51 disc scrub deck, 24V/138 Ah AGM batteries

See Cleaning Heads & Brushes section for available scrub decks.

B 40 W ACCESSORIES

ACCESSORIES

Order No.	Description
<input checked="" type="checkbox"/> 4.777-411.0	Curved squeegee assembly, 33.5 inches, with caster, polyurethane
<input checked="" type="checkbox"/> 5.035-488.0	Home Base kit (adapter and cable hook)
<input checked="" type="checkbox"/> 6.980-077.0	Double hook (requires 5.035-488.0)
<input checked="" type="checkbox"/> 5.035-344.0	Operator key, yellow
<input checked="" type="checkbox"/> 5.035-348.0	Foreman key, gray
<input type="checkbox"/> 4.035-369.0	Lid with tank rinsing system
<input type="checkbox"/> 4.035-345.0	Quick fill tank system (requires 9.083-003.0)
<input type="checkbox"/> 9.083-003.0	Hose coupling
<input type="checkbox"/> 6.273-207.0	Squeegee blade set, oil resistant (standard w/ 4.777-411.0)
<input type="checkbox"/> 6.273-229.0	Squeegee blade set, anti stripe oil resistant
<input type="checkbox"/> 6.273-290.0	Squeegee blade set, for textured floors
<input type="checkbox"/> 6.273-213.0	Squeegee blade set, EPDM
<input type="checkbox"/> 4.777-401.0	Squeegee assembly with straight polyurethane reversible blades
<input type="checkbox"/> 4.777-416.0	Squeegee assembly with curved EPDM blades
<input type="checkbox"/> 4.035-374.0	Home Base kit (includes mop support, mop clip and bottlehook)
<input type="checkbox"/> 4.035-406.0	Home Base kit carrying case
<input type="checkbox"/> 6.980-078.0	Mop clip (requires 5.035-488.0)
<input type="checkbox"/> 5.035-655.0	Plate mop bracket
<input type="checkbox"/> 5.035-656.0	Retaining bracket mop bracket
<input type="checkbox"/> 6.980-080.0	Bottle hook (requires 5.035-488.0)
<input type="checkbox"/> 4.035-408.0	Operator key, yellow, set of 5

SERVICES

Order No.	Description
<input type="checkbox"/> 7.000-270.0	Fleet one year premium subscription
<input checked="" type="checkbox"/> Included <input type="checkbox"/> Optional	

B 80 W BP



This large scrubber easily goes anywhere.

The B 80 W BP scrubbers cover a lot of area quickly, but are still easily maneuverable. They feature a robust, interchangeable, maintenance-friendly scrub deck. Choose from cylindrical or disc in 22", 26", or 30" widths. Kärcher Fleet comes pre-installed on this machine to provide you with complete visibility of your machine.

Thoughtfully designed scrub decks

- Decks automatically raise and lower as necessary
- Interchangeable decks changed quickly and without tools.

Four color LCD screen

- Easily select your cleaning mode with the easy-to-read symbols on the large 4-color display



B 80 W BP + R 65

B 80 W BP + D 65

TECHNICAL SPECIFICATIONS

		B 80 W BP + R 65	B 80 W BP + D 65
Cleaning path/width	in	26	26
Brush type	cylindrical/disc/pad	Cylindrical	Disc
Brush quantity	units	2	2
Suction bar (squeegee) width	in	39	39
Drive	pad-assist/traction	Traction	Traction
Solution/recovery capacity	gal	21/21	21/21
Theoretical/practical productivity	sq. ft/hr	27,980/18,180	27,980/18,180
Operating noise level - std/Eco! mode	dBa	69/66	69/66
Battery charger	shelf/on-board	On-Board	On-Board
Brush contact pressure	lbs	213	117
Brush speed	rpm	400-1,550	180
Drive/vac motor rating	watts	350/580	350/580
Vac motor suction	cfm	53	53
Waterlift	in of water	67	67
Weight (excluding battery/ with battery)	lbs	282 / 617	289 / 617
Dimensions (L x W x H)	in	61 x 29 x 45	62 x 29 x 45

EQUIPMENT

Order No.	Description
9.841-204.0	B 80 W Bp, D 65 disc scrub deck, 24V/260 Ah wet batteries, with curved squeegee
9.841-198.0	B 80 W Bp, R 65 cylindrical scrub deck, 24V/225 Ah wet batteries, on-board charger, with curved squeegee
9.841-200.0	B 80 W Bp, R 65 cylindrical scrub deck, 24V/255 Ah AGM batteries, on-board charger, with curved squeegee
9.841-201.0	B 80 W Bp, D 65 disc scrub deck, 24V/255 Ah AGM batteries, on-board charger, with curved squeegee
9.841-203.0	B 80 W Bp, R 65 cylindrical scrub deck, 24V/260 Ah wet batteries, on-board charger, with curved squeegee

BD 70/75 W BP CLASSIC



Smaller, but still mighty.

This economically-designed scrubber provides you all the cleaning power to take on large jobs—perfect for retail environments, grocery stores, municipalities, and BSC's.

Easy to use

- Adaptable to specific floor type cleaning needs
- Large aluminum brush deck is tough and durable
- Wet and AGM battery options are available



BD 70/75 W BP CLASSIC

TECHNICAL SPECIFICATIONS			
Cleaning path/width		in	28
Brush type	cylindrical/disc/pad		pad
Brush quantity		units	2
Brush diameter		in	14
Suction bar (squeegee) width		in	41
Drive	pad-assist/traction		traction
Solution/recovery capacity		gal	19.8 / 19.8
Theoretical/practical productivity		sq. ft/hr	30,645 / 19,920
Operating noise level		dBa	63
Battery charger	shelf/on board		shelf
Brush contact pressure		lbs	66 - 150
Brush speed		rpm	180
Vac motor rating		watts	500
Vac motor suction		cfm	51
Waterlift		in of water	64
Weight with batteries		lbs	512 wet / 556 AGM
Dimensions (LxWxH)		in	57 x 30 x 42

EQUIPMENT

Order No.	Description
9.841-466.0	BD 70/75 W Bp Classic, 185 Ah wet batteries, shelf charger
9.841-467.0	BD 70/75 W Bp Classic, 190 Ah AGM batteries, shelf charger

ACCESSORIES

Order No.	Description
■ 4.762-590.0	Pad drive board STRONG (standard)
■ 6.369-003.0	Pad red, medium-soft (standard), set of 5
■ 8.663-291.0	Battery 6V/190 Ah AGM (standard with 9.841-467.0) (4 REQUIRED)
■ 8.622-835.0	Battery 6V/185 Ah wet (standard with 9.841-466.0) (4 REQUIRED)
■ 8.643-374.0	Shelf charger for 190Ah AGM batteries
■ 8.644-222.0	Shelf charger for 185Ah Wet batteries
■ 4.777-108.0	Squeegee, 1030mm (standard w/suction blades)
■ 4.037-144.0	Suction blades, 1030mm, blue (standard)
□ 4.905-010.0	Disc brush, red, medium
□ 4.905-013.0	Disc brush, black, hard
□ 4.905-012.0	Disc brush, natural, soft
□ 4.905-011.0	Disc brush, white, very soft
□ 4.037-145.0	Suction blades, 1030 mm (polyurethane)
□ 9.753-088.0	Squeegee transport plate
□ 2.644-140.0	Warning beacon add-on kit

■ Included □ Optional

BD 80/100 W BP CLASSIC



Quality and durability in a cost effective package.

This economically-designed scrubber provides you all the cleaning power to take on large jobs—perfect for retail environments, grocery stores, and BSC's.

Easy to use

- Storage compartment in the back for shelf charger and other accessories.
- An automatic brake is integrated into the transaxle and a cost effective, large aluminum brush deck is included.

BD 80/100 W BP CLASSIC

TECHNICAL SPECIFICATIONS

Cleaning path/width	in	32
Brush type	cylindrical/disc/pad	pad
Brush quantity	units	2
Brush diameter	in	16
Suction bar (squeegee) width	in	43
Drive	pad-assist/traction	traction
Solution/recovery capacity	gal	26.4 / 26.4
Theoretical/practical productivity	sq. ft/hr	35,025/22,770
Operating noise level	dBA	63
Battery charger	shelf/on board	shelf
Brush contact pressure	lbs	88 - 200
Brush speed	rpm	180
Vac motor rating	watts	600
Vac motor suction	cfm	53
Waterlift	in of water	67
Weight with batteries	lbs	705
Dimensions (LxWxH)	in	59 x 33 x 42

EQUIPMENT

Order No.	Description
9.841-456.0	BD 80/100 W Bp Classic, 295 Ah wet batteries, shelf charger
9.841-457.0	BD 80/100 W Bp Classic, 285 Ah AGM batteries, shelf charger

ACCESSORIES

Order No.	Description
■ 4.762-591.0	Pad drive board (standard)
■ 6.371-332.0	Pad, red, medium-soft (standard)
■ 8.629-184.0	Battery, Discover 6V/285 Ah AGM (standard with 9.841-457.0)
■ 8.622-837.0	Battery, Trojan 6V/271 Ah wet (standard with 9.841-456.0)
■ 8.643-373.0	Shelf charger for wet batteries (standard with 9.841-456.0)
■ 8.643-374.0	Shelf charger for AGM batteries (standard with 9.841-457.0)
■ 4.777-102.0	Squeegee, 1100 mm (standard with suction blades)
■ 4.037-138.0	Suction blades, 1230 mm, blue (standard)
□ 4.905-000.0	Disc brush, red, medium
□ 4.905-032.0	Disc brush, black, hard
□ 4.905-031.0	Disc brush, natural, soft
□ 4.905-030.0	Disc brush, white, very soft
□ 4.037-140.0	Suction blades 1230 mm, transparent
□ 9.753-088.0	Squeegee transport plate
□ 2.644-140.0	Warning beacon add-on kit

■ Included □ Optional

B 110 R

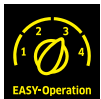


Outstanding suction performance.

The brand-new B 110 R is perfect for all floors. The robust front bumper prevents damage to the machine and other objects, while speed dependent water supply saves on water and detergents. The newly designed squeegee picks up more water and requires less attention and the adjustable seat allows workers to feel more comfortable during long shifts.

Advanced updates for a top-of-the-line machine

- Front bumper and driving lights
- Side scrub deck for close to the edge cleaning
- Adjustable comfort seat
- Hill driving assistant and automatic electronic brake



B 110 R

TECHNICAL SPECIFICATIONS

Cleaning path/width	in	30
Brush type	cylindrical/disc/pad	Cylindrical and disc
Brush quantity	units	2
Brush diameter	in	4" cylindrical, 15" disc
Suction bar (squeegee) width	in	37
Drive	pad-assist/traction	Traction
Solution/recovery capacity	gal	29/29
Theoretical/practical productivity - 30" deck	sq. ft/hr	48,440/31,485
Operating noise level	dba	59-74
Battery charger	shelf/on board	Shelf
Brush contact pressure	lbs	165
Brush speed	rpm	180/1200
Drive /vac motor rating	watts	600
Vac motor suction	cfm	53
Waterlift	in of water	68
Weight with batteries	lbs	1190
Dimensions (LxWxH)	in	65 x 30 x 52
Minimum turning radius	ft	2.87
Climbing ability - maximum slope	% grade	10
Max. working speed	mph	3.8

EQUIPMENT

Order No.	Description
9.841-441.0	BD 75/110 R Bp Wet, 30" disc scrub deck
9.841-444.0	BD 75/110 R Bp AGM, 30" disc scrub deck
9.841-445.0	BR 75/110 R Bp Wet, 30" cylindrical scrub deck
9.841-449.0	BR 75/110 R Bp AGM, 30" cylindrical scrub deck

See Cleaning Heads & Brushes section for available scrub decks.

B 150 R BP



Race into efficiency with the B 150.

The B 150 R can cover up to 58,125 ft²/hr making this one impressively productive scrubber. Although it can cover large areas quickly, we made sure that it has great visibility for safety. Our KIK operating system and the color coded controls make operation simple and intuitive. KIK allows managers to control what functions and settings their employees can use and adjust.

Advanced model features all-wheel drive (special order)

- Clean ramps with grades up to 18%
- Features a unique all-wheel brake system for safety
- Utilize the large color LCD screen to adjust everything to your needs including contact pressure, water volume, brush speed, etc.

Let the machine do the work

- Auto tank-rinsing and auto-fill come standard to allow the operator to do other tasks while rinse and fill are taking place



		B 150 R + R 75	B 150 R + D 75	B 150 R + R 90	B 150 R + D 90
TECHNICAL SPECIFICATIONS					
Cleaning path/width	in	30	30	35	35
Brush type	cylindrical/disc/pad	Cylindrical	Disc	Cylindrical	Disc
Brush quantity	units	2	2	2	2
Brush diameter	in	3.5	7.5	3.5	17.7
Suction bar (squeegee) width	in	37	37	42	42
Drive	pad-assist/traction	Traction	Traction	Traction	Traction
Solution/recovery capacity	gal	40/40	40/40	40/40	40/40
Theoretical/practical productivity	sq. ft/hr	48,438/31,485	48,438/31,485	58,125/37,780	58,125/37,780
Operating noise level - std/Eco! mode	dBA	67/64	67/64	67/64	67/64
Battery charger	shelf/on board	Shelf	Shelf	Shelf	Shelf
Brush contact pressure	lbs	245	224	275	238
Brush speed	rpm	1,200	140	1,200	140
Drive /vac motor rating	watts	600/750	600/750	600/750	600/750
Vac motor suction	cfm	55	55	55	55
Waterlift	in of water	72	72	72	72
Weight without batteries	lbs	959-1,146	959-1,146	959-1,146	959-1,146
Dimensions (LxWxH)	in	65 x 31 x 56	65 x 31 x 56	65 x 31 x 56	65 x 31 x 56
Minimum turning radius	ft	2.9	2.9	2.9	2.9
Climbing ability - maximum slope	% grade	10	10	10	10
Max. working speed working	mph	3.7	3.7	3.7	3.7

PS 4/7 BP OBC MISTER & ELECTROSTATIC SPRAYER

Prevention is the best medicine.

PS 4/7 Bp OBC Mister

Achieve a higher level of efficacy with the Kärcher PS 4/7 Bp OBC Mister. This hospital-grade spraying system is specifically designed for use with Vital Oxide® disinfectant. Reduce the risks of Health Care Acquired Infections by killing virus, bacteria and mold faster, safer and more effectively.

PS 4/7 Electrostatic Sprayer

- NEW - our Electrostatic PS 4/7 sprayer adds the static charge to the particles to allow them to “wrap around” objects and provide even better coverage.

Vital Oxide

- No rinse sanitizer for food contact surfaces (D2) and kills harmful bacteria, mold and mildew, deodorizes and eliminates allergens.
- Registered as a carpet disinfectant and recognized by CRI to be safe on carpets. EPA Est. No. 29909-CA-1 (See batch code for actual establishment number)



PS 4/7 BP OBC MISTER

PS 4/7 ELECTROSTATIC SPRAYER

TECHNICAL SPECIFICATIONS

		PS 4/7 BP OBC MISTER	PS 4/7 ELECTROSTATIC SPRAYER
Pressure	psi	100	100
Solution spray rate	gpm	0.05	0.05
Chemical tank	gal	1	1
Continuous spray on one battery charge	hrs	8	8
Voltage	V	12	12
Wheels	in	3	3
Compact height for storage/transport	in	20	20
Sound level	dBa	45	45
Continuous spray time (electrostatic)	min	N/A	40
Lithium battery	V	N/A	3.6, AA size
Weight (including battery)	lbs	40	40
Dimensions (L x W x H)	in	20 x 15 x 38	20 x 15 x 38

EQUIPMENT

Order No.	Description
1.007-084.0	PS 4/7 Bp OBC, mister
1.007-090.0	PS 4/7 Electrostatic sprayer with lithium battery

ACCESSORIES

Order No.	Description
■ 8.639-048.0	Charger
■ 8.637-980.0	12V AGM battery
■ 8.704-694.0	Chemical pail pump
□ 8.644-738.0	Electrostatic sprayer kit (to be retrofitted on previously purchased PS 4/7 machines)
□ 8.645-080.0	Mister Nozzle Kit (converts PS 4/7 Bp OBC mister to multi-user sprayer)

DETERGENTS

Order No.	Description
□ 8.639-558.0	Vital Oxide®, 4 gallon - case, ready to use
□ 8.639-560.0	Vital Oxide®, 6 quart - case, ready to use
□ 8.644-292.0	Vital Oxide®, 5 gallon - pail, ready to use
□ 8.642-823.0	Vital Oxide®, 15 gallon - pail, ready to use
□ 8.698-112.0	Vital Oxide®, 55 gallon - drum, ready to use

■ Included □ Optional

DUAL MISTER

Combat viruses with misting precision.

Kärcher's cold water, corrosion-resistant aluminum Dual Mister easily converts from a pressure washer to a directional sprayer for dispensing sanitizer or disinfectants, such as Vital Oxide®.1 This reliable electric powered pressure washer comes standard with a humidifying nozzle and an Easy!Valve that allows the operator to easily switch from pressure washing to directional spraying mode. This unit is designed to combat viruses and bacteria in spray mode, or it can be used as a high pressure washer to clean surfaces.

- Easily converts from cart to skid
- Provides a bypass loop for additional pump protection
- Low profile handle and compact footprint



HD 2.0/1000 DUAL MISTER

TECHNICAL SPECIFICATIONS		HIGH PRESSURE MODE	DIRECTIONAL SPRAY MODE
Pressure	PSI	1000	107-480
Solution spray rate	GPM	2.0	0.023-0.06
Drive	Drive	Direct	Direct
Horsepower	HP	1.5	1.5
Electrical	Electrical	120V/1ph	120V/1ph
Amps	Amps	13.6	6.5-8.0

EQUIPMENT

Order No.	Description
1.106-160.0	HD 2.0/1000 Dual Mister

ACCESSORIES

Order No.	Description
■ 8.750-247.0*	Gun, M407 (2 for dual gun system)
■ 8.925-393.0*	Hose, 1/4" X 75', R1, 4000 PSI, SW X SW
■ 8.783-040.0	Lance, 44", zinc-plated, handle and coupler
■ 8.712-338.0	Nozzle, yellow, 035
■ 8.712-339.0	Nozzle, green, 035
■ 8.712-340.0	Nozzle, white, 035
■ 8.929-512.0*	Misting Nozzle Assembly with 1/4" Quick Connect
■ 8.709-175.0	Filter High Pressure 1/4"
□ 8.902-421.0*	Two-Gun Tee Coupler
□ 8.710-620.0	Legacy Superlite stainless steel wand, 72" - 56.0 oz
□ 9.807-750.0	37.5" long handle
□ 9.807-753.0	Lance holder
□ 9.807-752.0	Hose storage hook
□ 9.807-751.0	Handle with hose reel (mild steel anthracite handle)
□ 9.802-166.0*	3/8" Socket, Female, Brass
□ 9.802-169.0*	3/8" Socket, Male, Brass
□ 8.707-140.0*	1/4" Nipple, Male, Stainless Steel
□ 8.707-144.0*	3/8" Nipple, Female, Stainless Steel

■ Included □ Optional *Must order for dual misting system / two gun coupler for 1.106-160.0
Corrosive sanitizers or disinfectants will void the warranty

DUAL MISTER CART



All-in-one directional sprayer and pressure washer.

This reliable electric powered pressure washer comes standard with a humidifying nozzle and an Easy!Valve that allows the operator to easily switch from pressure washing to directional spraying mode. It comes on an easy-to-maneuver cart with flat-free tires, two mounted hose reels, and provides a bypass loop for additional pump protection. In short, this unit is designed to combat viruses and bacteria in directional sprayer mode, or it can be used as a high pressure washer to clean surfaces.

- Easily switch from spray mode to pressure washing
- Includes two mounted hose reels for dual spray action
- Low profile handle and compact footprint

HD 2.0/1000 DUAL MISTER CART

TECHNICAL SPECIFICATIONS		HIGH PRESSURE MODE	DIRECTIONAL SPRAY MODE
Pressure	PSI	1000	107-480
Solution spray rate	GPM	2.0	0.023-0.06
Drive	Drive	Direct	Direct
Horsepower	HP	1.5	1.5
Electrical	Electrical	120V/1ph	120V/1ph
Amps	Amps	13.6	6.5-8.0
Detergent Tank	gal	10	10
Misting Droplet Size	microns	N/A/	39.9-54

EQUIPMENT

Order No.	Description
1.106-161.0	HD 2.0/1000 Dual Mister Cart

ACCESSORIES

Order No.	Description
■ 8.750-247.0	Gun, M407
■ 8.925-393.0	Hose, 1/4" X 75', R1, 4000 PSI, SW X SW
■ 8.783-040.0	Lance, 30", zinc-plated, handle and coupler
■ 8.712-338.0	Nozzle, yellow, 035 (1 included)
■ 8.712-339.0	Nozzle, green, 035 (1 included)
■ 8.712-340.0	Nozzle, white, 035 (1 included)
■ 8.929-512.0	Misting Nozzle Assembly with 1/4" Quick Connect (2 included)
■ 8.709-175.0	Filter High Pressure 1/4"
■ 8.902-421.0	Two-Gun Tee Coupler
□ 8.710-620.0	Legacy Superlite stainless steel wand, 72" - 56.0 oz
□ 9.807-750.0	37.5" long handle

■ Included □ Optional

SG 4/4



Hygienically clean without the use of chemicals.

Time is money—particularly in commercial cleaning. The SG 4/4 steamer has an ingenious two-tank filling system allowing for continuous use. Steam cleaning can impressively remove up to 99.999% of bacteria without chemical. It is also ideal for cleaning kitchens and grout.

Continuous use

- Our unique two-tank system allows for continuous use
- Very little time is needed to heat up the unit

Adjust to your needs

- Control the level of steam
- Switch to pressurized hot water to remove stubborn dirt

Designed for your health

- Only water is used by the SG 4/4 to save you money and to improve the health of users and guests



SG 4/4

TECHNICAL SPECIFICATIONS

Voltage	V	110
Steam temp/pressure	°F/psi	248/58
Tank capacity	gal	1.06
Cable length	in	24.5
Weight without accessories	lbs	17.6
Dimensions (L x W x H)	in	19 x 12.6 x 10.8

EQUIPMENT

Order No.	Description
1.092-805.0	SG 4/4, Commercial steam cleaner
9.841-414.0	SG 4/4 Commercial steam cleaner with transport cart

ACCESSORIES

Order No.	Description
■ 4.322-046.0	Steam Hose
■ 4.127-024.0	Extension Tube
■ 2.884-280.0	Hand Tool
■ 6.906-185.0	Floor Nozzle
■ 2.863-263.0	Power Nozzle Set
■ 2.884-281.0	Point Jet Nozzle
■ 4.013-030.0	Funnel
■ 2.863-264.0	Round Brush Set
□ 2.863-025.0	Window Nozzle
□ 6.273-140.0	Wiper Blade (window)
□ 2.863-062.0	Wallpaper Stripper
□ 2.863-171.0	Steam+Clean Microfiber Cloth Set for Bathrooms (Includes 4 different cloths)
□ 2.863-172.0	Steam+Clean Microfiber Cloth Set for Kitchens (Includes 4 different cloths)
□ 2.863-173.0	Steam+Clean Microfiber Velour Floor Cloth Set (Includes 2 cloths)
□ 2.863-174.0	Steam+Clean Microfiber Velour Cloth Covers for the Hand Tool (Includes 2 cloths)
□ 6.962-097.0	Filling Funnel
□ 2.885-465.0	Floor Tool Replacement
□ 6.962-239.0	Two Wheel Transport Cart

■ Included □ Optional

SGV 6/5



Hygiene, non-stop.

The easy-to-use SGV 6/5 steam vacuum cleaner offers hygienic cleanliness. A single machine that is a steam cleaner and wet vacuum cleaner in one. With EASY Operation switch, secure accessory integration and hand tool for controlling the

Steam/vacuum function

- Straight forward operation
- One easy-to-use switch controls all operation
- Self-explanatory symbols means less training required

Continuous operation

- Our unique design allows you to refill the water while in use

Change on the go

- The Included hand tool features an adjustment knob that allows you to adjust the water/steam regulation and turn the vacuum on and off.

SGV 6/5

TECHNICAL SPECIFICATIONS

Voltage	V	110-120
Steam temp/pressure	°F/psi	327/87
Tank capacity	gal	1.3
Cable length	ft	24.5
Weight without accessories	lbs	86
Dimensions (L x W x H)	in	25 x 19 x 38

EQUIPMENT

Order No.	Description
1.092-003.0	SGV 6/5, commercial steam cleaner and wet vacuum

ACCESSORIES

Order No.	Description
■ 2.863-011.0	Round brush set, 3 Brushes
■ 2.889-005.0	Floor Nozzle, 12 inches
■ 2.889-006.0	Brush strips for floor nozzle 2.889-005.0
■ 2.889-007.0	Rubber Strip, 12 inches for floor nozzle 2.889-005.0
■ 2.889-008.0	Hand Nozzle
■ 2.889-009.0	Brush Strip, 6 inches for hand nozzle 2.889-008.0
■ 2.889-010.0	Rubber Strip, 6 inches for hand nozzle 2.889-008.0
■ 2.889-011.0	Adapter
■ 2.889-028.0	Crevice Nozzle
■ 2.889-052.0	Adapter for attaching round brushes
■ 4.440-009.0	Steam suction hose
■ 2.889-004.0	Extension tube set (2 pieces)
□ 2.889-058.0	Extension tube (1 piece)
□ 2.889-053.0	Triangular floor nozzle
□ 2.863-007.0	Round brush stainless steel (very hard bristles) set, 3 Nozzles
□ 2.863-008.0	Round Brass Brush (hard bristles) Set, 3 Nozzles
□ 2.863-009.0	Pekalon round brush (medium-hard bristles) set

■ Included □ Optional

SG BP GUM REMOVER



Turn up the heat on gum removal.

The Kärcher SG 1 C Bp is a portable gum remover. Powered by a single lithium ion battery, this gum remover is quiet and offers up to 4 hours of uninterrupted operation. Gum is removed in 4-6 seconds, and it is safe to use on stone, concrete and even carpet. Great for maintaining shopping malls, schools, train stations, airports, hotels, hospitals, restaurants and supermarkets.

Easy to Use

- SG1 C Bp's low pressure fuel canisters are designed to ensure delivery of proper fuel volume and safe operation.

Ultimate portability

- No cords ensures safety and convenience

Environmentally friendly

- No harsh residue – safe on all surfaces



SG1 C BP

TECHNICAL SPECIFICATIONS

Run time	hrs	4
Weight	lbs	11
Dimensions (L x W x H)	in	4.5 x 13 x 20.5

EQUIPMENT

Order No.	Description
1.013-104.0	SG1 C Bp, backpack gum remover

ACCESSORIES

Order No.	Description
<input type="checkbox"/> 8.639-871.0	Service pack: 2 LPG cartridges, 4 bottles of solution and 2 black stainless steel brushes, 1 green brush. Expect 8-9 hours run time.
<input type="checkbox"/> 8.642-880.0	Stainless steel brushes: 2 pack replacement stainless steel brushes (black)
<input type="checkbox"/> 8.640-136.0	Polypropylene brushes: 2 pack polypropylene brushes (green), for carpet and material
<input type="checkbox"/> 8.638-579.0	12-Pack of gas bottles
<input type="checkbox"/> 8.638-580.0	24 liters of gum remover solution
<input type="checkbox"/> 8.639-828.0	Charger
<input type="checkbox"/> 8.641-465.0	Battery
<input type="checkbox"/> 8.639-846.0	Lance & hose

■ Included □ Optional

AB 84



Dry within minutes.

The powerful AB 84 air blower moves up to 3,000 cfm of air cutting drying times by up to 50%! The ideal solution for use in the building trade and for water damaged areas. Perfect for contract cleaners, hotels, construction industry and flood damage restoration specialists,

Meets your needs

- Wheels and collapsible handle come standard, making it easy to transport.
- Sturdy, four-point motor mount.
- Multiple times options available.

Shorter drying times.

- Shortened drying time of spray-extracted or shampooed carpets by up to 50%.
- Built-in carpet clip for use with flood restoration,
- For use with everything from emergency air removal from buildings to inflatable playgrounds.
- Built-in kick stand for multiple airflow angles.

AB 84

TECHNICAL SPECIFICATIONS

Air flow rate - level 1, 2, 3	cfm	2000/2500/3000
Fan speed - level 1, 2, 3	rpm	1050/1350/1600
Power cord length	ft	20
Motor rating	HP	0.5
Voltage	V	115
Weight	lbs	33
Dimensions (L x W x H)	in	15.9 x 18.7 x 18.7

EQUIPMENT

Order No.	Description
1.004-039.0	AB 84, three-speed commercial air blower with collapsible handle

BDS 51/175 C



Strong, solid and robust operation.

The BDS 51/175 C floor machine is a high quality, durable unit that offer powers and versatility for scrubbing and stripping. It features an adjustable handle to accommodate various user heights and five inch non-marking wheels to allow easy transportation. This machine is available in single-speed or dual-speed.

Floor Machine Built for Durability and Reliability

- Robust motor for everyday reliability
- Separate start and run capacitors for durability
- Cord strain relief to keep cord from breaking or tearing
- Strong and solid handle housing for trouble free operation



BDS 51/175 C

TECHNICAL SPECIFICATIONS

Pad size	in	20
Pad speed	rpm	175
Theoretical/practical productivity	sq.ft/hr	2,222
Operating noise level	dB(A)	63
Voltage	V	115
Motor	hp	1.5
Wheel diameter	in	5 x 1.25
Power cord length	ft	50
Weight	lbs	118
Dimensions (L x W x H)	in	24.5 x 21 x 47

EQUIPMENT

Order No.	Description
1.009-095.0	BDS51/175 C, twenty-inch

ACCESSORIES

Order No.	Description
■ 8.628-430.0	Pad driver, 20-inch with clutch plate
□ 8.600-062.0	Solution tank 4 gallon
□ 8.600-507.0	Center lock
□ 8.628-369.0	20-inch aggressive grit brush with clutch plate
□ 8.628-378.0	20-inch mild grit brush with clutch plate
□ 8.628-379.0	20-inch nylon polish brush with clutch plate
□ 8.628-377.0	20-inch nylon scrub brush with clutch plate
□ 8.628-370.0	20-inch polypropylene brush with clutch plate
□ 8.625-259.0	20-inch sanding disc

■ Included □ Optional

KÄRCHER DETERGENTS

Kärcher's detergents are highly concentrated and made with non-butyl blend of ingredients formulated to provide non-caustic, low-foaming detergent for a broad range of uses on many surfaces. They are engineered specifically to be metered through hot- or cold-water pressure washers with a high dilution ratio, making the cost-in-use very economical. Plus, our detergents are biodegradable.



1 Faster Results

Tested in the lab and in the field, to achieve results that are 3x faster than the original formula. With fast acting and efficient formulas, you'll use less product - saving you both time and money.

2 More Effective

Utilizing cutting-edge technology and enhanced raw materials, Kärcher detergents deliver superior cleaning results in even the toughest environments. Designed for a higher tolerance for hard water—less detergent is needed to break down the dissolved calcium and magnesium salts, leading to a marked reduction in insoluble mineral deposits commonly associated with hard water.

3 Environmentally Friendly

With an eye on preserving our natural resources, we are proud to offer a complete lineup of environmentally friendly detergents, many of which are phosphate-free. Rigorous testing has proven these new formulas to be effective while providing a sustainable solution for preventing the negative impacts often associated with runoff and providing you with peace of mind.

EASY!FORCE TRIGGER GUN – ZERO EFFORT REQUIRED!

Introducing the most effortless trigger gun on the market, the new Kärcher EASY!Force. The revolutionary EASY!Force trigger gun uses its own recoil force to hold the trigger down for you. This means no more sore hands after hours of use. Try our EASY!Force trigger gun – it is so much fun, you will not want to put it down!



Ergonomics. Our EASY!Force technology holds the trigger down once you start it, avoiding the strain on your hands associated with other trigger guns.

Faster set-up. The new EASY!Lock connection system allows set-ups that are five times faster than existing systems. A simple 360° turn provides a fully-threaded, secure connection.

Designed for long life. Our EASY!Force valve consists of a ceramic ball with ceramic sealing seat that is resistant to any particles liable to cause potential damage. This gives it a lifetime five times longer than trigger guns with conventional valve.

Two versions. Introducing the North American EASY!Force trigger gun with standard threads for our North American engineered pressure washers and accessories, and our EASY!Force trigger gun



with EASY!Lock threading for our German engineered machines and EASY!Lock accessory system.

- **EASY!Force - North American Model.** Standard 1/4" connection for wand and 3/8" connection for hose. (NOT for use with EASY!Lock accessories)
P/N 8.756-481.0 (see page 112)
- **EASY!Force - German Model.** The EASY!Lock Threading for EASY!Lock adapters and accessories. (Adapters not included)
P/N 4.118-005.0

Built in safety. The trigger gun features a mechanical safety to prevent accidental starts for maximum safety without compromising its ease-of-use.

Perfect connections. The same quick locking, screw connection of EASY!Lock can be used on existing pressure washers and accessories. An easy system of adapters ensures compatibility is easy, and allows you to experience the power of the EASY!Force trigger gun. Contact your local dealer to find out more. Try our EASY!Force trigger gun – you won't want to put it down.

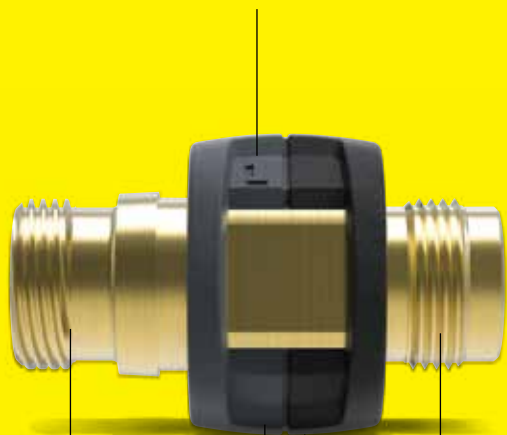
WHAT PERFECT CONNECTIONS LOOK LIKE

In order to cover the various interfaces, from the pressure washer to the nozzle, as well as ensuring compatibility is easy, a total of 10 different adapters are available. This ensures that all existing machines and accessories can continue to be used together with the new machines and accessories with EASY!Lock connections. Listed to the right are all adapters with their respective application.*

Our EASY!Lock system
The below illustration demonstrates the features of adapters 1-8. These adapters are for use with machines having metric connections. Adapters 9 and 10 are for use with 3/8" connections.

EMBOSED NUMBER

Every adapter has its own number. Clear and unmistakable.



EASY!Lock connection
Quadruple trapezoidal thread with conical lock

Metric Thread
Metric thread for accessories without EASY!Lock

Anthracite gray = EASY!Lock
Color coding for EASY!Lock connection

Black = Metric Thread
Color coding for conventional threaded connection

1



2



3



4



5



6



7



8



9



10



*For example, any pressure washer with M22 x 1.5 connection can quickly be converted to the new EASY!Lock system with adapter 2.



EASY!Lock - M 22 x 1.5

Order no. 4.111-029.0

Adapter for connecting high-pressure hoses with EASY!Lock and high-pressure hoses with M 22 x 1.5 connection.



EASY!Lock - M 22 x 1.5

Order no. 4.111-030.0

Adapter for connecting high-pressure hoses with EASY!Lock and pressure washers / trigger guns with M 22 x 1.5 connection.



EASY!Lock - M 22 x 1.5

Order no. 4.111-031.0

Adapter for connecting spray lances or Servo Control regulators with EASY!Lock and trigger guns with M 22 x 1.5.



EASY!Lock - AVS

Order no. 4.111-032.0

Adapter for connecting EASY!Force trigger gun and high-pressure hoses with AVS swivel connection.



EASY!Lock - M 22 x 1.5

Order no. 4.111-033.0

Adapter for connecting EASY!Force trigger gun and spray lances with M 22 x 1.5 connection.



EASY!Lock - M 22 x 1.5

Order no. 4.111-034.0

Adapter for connecting EASY!Force trigger gun / pressure washers with EASY!Lock and high-pressure hoses with M 22 x 1.5 connection.



EASY!Lock - M 18 x 1.5

Order no. 4.111-035.0

Adapter for connecting nozzles with EASY!Lock and spray lances with M 18 x 1.5 connection.



EASY!Lock - M 18 x 1.5

Order no. 4.111-036.0

Adapter for connecting spray lances with EASY!Lock and nozzles with M 18 x 1.5 connection.



EASY!Lock - STANDARD 3/8" HOSE

Order no. 4.111-041.0

Adapter for connecting EASY!Force trigger gun and standard 3/8" US-style hose connection.



EASY!Lock - STANDARD 3/8" MACHINE OUTLET

Order no. 4.111-042.0

Adapter for connecting high-pressure hoses with EASY!Lock and 3/8" US-style machine outlet.

ADDITIONAL EASY!LOCK ADAPTERS ON PAGE 101

ISOLAR 400/800 SOLAR PANEL CLEANER



No place is unreachable.

The iSolar accessories system is a complete modular solution that offers all the necessary products for your cleaning needs, from water connections to brushes. This system is also compatible with many Kärcher pressure washers, meaning, existing pressure washers can usually be used to operate iSolar. Because the system is modular, we can build a custom solution to fulfill any requirement.

The iSolar 400 and iSolar 800 offer superior and safe cleaning, thanks to brushes powered by a pressure washer's water jet. The mechanical action of the bristles, made of nylon for scratch-free surface cleaning, operate at low pressure, eliminating any danger of the panels being damaged. The rotating brushes are also fitted with robust ball bearings to guarantee exceptionally long service life.



1 iSolar 800

Counter-rotating disc brushes ensure:

- Excellent cleaning performance and area coverage
- Optimal handling with balancing of transverse forces
- Pre-rinsing of adjacent panels

2 Comfortable in every position

Stable articulated joint offers:

- Convenient and flexible working positions
- Robust brass design for maximum durability

3 iSolar 400

Entry-level model for smaller areas:

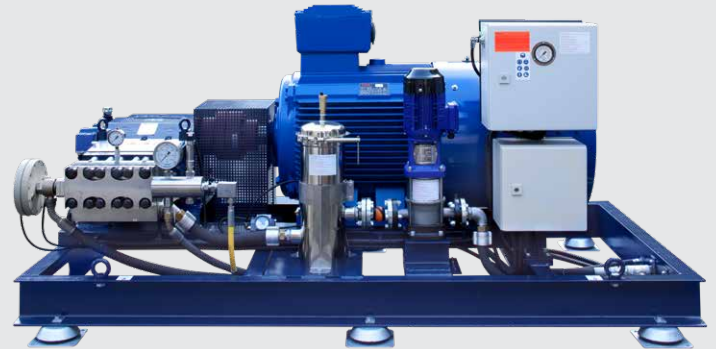
- Particularly suitable for elevated systems
- Pre-rinsing of adjacent panels

4 Safety first

For safe rooftop work:

- Safety harness with quick-release fasteners
- Guided fall arrestor with integrated shock absorber and lengthy guide rope

PRESSURE KiNG



WOMA[®] ULTRA-HIGH PRESSURE UNITS

Powerful and reliable: mobile and stationary high pressure units for applications up to 4,000 bar.



**PRESSURE
KiNG**

WATER AS A TOOL

WOMA is one of the leading manufacturers of high-pressure pumps, high-pressure units and accessories for cleaning and removal in industrial applications. For more than 50 years WOMA has been supplying high-pressure technology to customers all over the world. Through consequent research and development, we have today mastered systems with water pressure of up to 4,000 bar. As part of the Kärcher Group, through the international distributor and service network of the market leader in cleaning technology we are able to reach a growing international target market.

The revolutionary idea of using the mechanical effects of flowing water for cleaning with enormous pressures is the driving force of WOMA since its foundation in 1962.



PRESSURE KiNG

Content

EcoTherm

Effective cleaning with hot water.

Page 4

EcoMaster Classic

Simply to use, simply robust, simply efficient. Page 12

EcoMaster MK3

The mobile power pack.

Page 6

Individual Systems

According to your wishes and requirements. Page 14

EcoMaster Large Unit-Series

Powerful systems for high requirements.

Page 8

Unit Controllers

Clear and intuitive.

Page 16

EcoMaster ZWG

Powerful, versatile and efficient in every situation.

Page 10

Telematics Solution

Worldwide availability with maximum data security.

Page 18



ECOTHERM

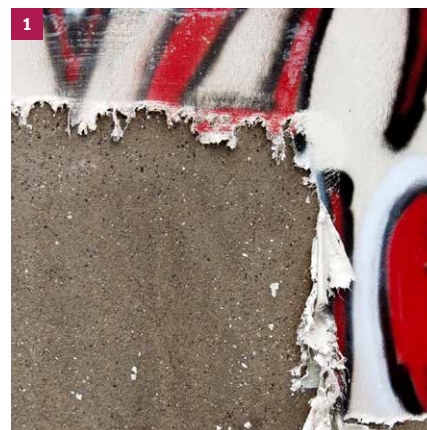
Effective cleaning with hot water.

The hot water cleaner EcoTherm reaches performance levels, which otherwise are only achieved by bigger high-pressure units. Cleaning with hot water is often more effective than with cold water. This means that lower pressures are sufficient for comparable cleaning tasks.

Advantages at a glance:

- The extremely reliable and durable high-pressure pump 70Y is characterized by its compact design and low weight.
- Economical and robust diesel engine (38 kW).
- The unit and the heater are operated via a common, modern and intuitive control.
(For detailed information on our device controls, see page 16 onwards).
- The compact and weight-optimized single-axle trailer is approved as a trailer up to 80 km/h and can be brought to site with almost any middle-class car.
- With up to 95 °C facades, small pipes, industrial flooring and other surfaces can be easily cleaned, oil and grease can be washed away and coating can be removed.
- The tank system with five chambers including a safety trough prevents the leakage of fluids such as fuel, oil or softeners.
- Automatic shutdown of the heating elements when there is no water supply increases safety and saves energy costs.
- Maximum safety for the user: The system is pressure free as long as the high-pressure gun is not activated.
- Integrated frost protection technology.

- 1 Graffiti and layers of paint can be easily removed from walls and facades with hot water.
- 2 Soiled floors and surfaces can be cleaned by using the EcoTherm.
- 3 Working with hot water can be carried out faster, more thoroughly and more economically.



Technical Data EcoTherm

Unit type	ET 600	ET 800
Max. pressure bar	600	800
Max. volume flow in l/min	28	21
Max. water temperature in °C	95	
Heating oil tank in l	100	
Fuel tank in l	100	
Water tank in l	200	
Weight incl. operating material in kg	1,700	
Measures in mm (L x W x H)	4,100 x 1,900 x 1,960	



ECOMASTER MK3

The mobile power pack.

The EcoMaster MK3 is a compact, high-performance unit for the maintenance of large structures and industrial plants, but also for many other applications in the industry, in the maritime sector, in the construction industry as well as in municipal services. The ultra-high pressure water jet unit is designed as a mobile trailer with an economic diesel engine.

Advantages at a glance:

- The heart of the EcoMaster MK3 are the powerful and reliable ultra-high pressure pumps of the M-Series, Type 190M and Type 250M.
- Available in three versions with operating pressures of 2,500 bar, 2,800 bar and 3,000 bar.
- Modern, intuitive control.
(For detailed information on our device controls, see page 16 onwards).
- Available in the engine classes stage 3a, 4 and 5 with the latest emission standard.
- Ideal for the removal of coating and concrete refurbishment, as well as for the separation and cutting of various materials.
- Maximum safety for the user: The system is pressure-less as long as the high pressure gun is not activated.
- Low noise operation due to a noise protection hood made from aluminum (<85 dB(A)).
- Road approval as trailer up to 80 km/h.


Technical Data EcoMaster MK3

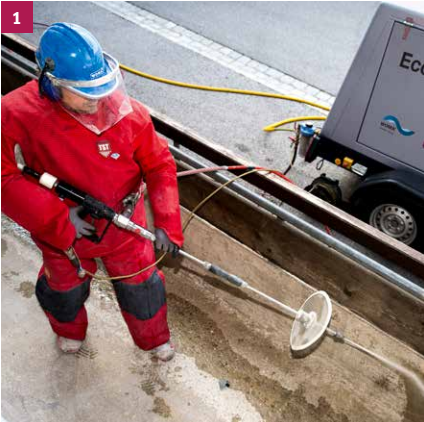
Unit type	190M	250M	190M	250M	190M	250M
Max. pressure in bar	2,500		2,800		3,000	
Max. volume flow in l/min	26	32	20	25	18	21
Stage 3a / 4 weight incl. operating fluids in kg	2,750 / 2,825		2,750 / 2,825		2,750 / 2,825	
Measures in mm (L x W x H)	≈ 4,450 x 2,030 x 2,190		≈ 4,450 x 2,030 x 2,190		≈ 4,450 x 2,030 x 2,190	
Stage 5 weight incl. operating fluids in kg	2,915		2,915		2,915	
Measures in mm (L x W x H)	≈ 4,450 x 2,030 x 2,320		≈ 4,450 x 2,030 x 2,320		≈ 4,450 x 2,030 x 2,320	


1 With the WOMA high-pressure guns and operating pressures of up to 3,000 bar, even selective concrete removal is possible.


2 In combination with the WOMA TD3000 SCS, the EcoMaster MK3 is ideally suited for the uncovering of steel reinforcements and reinforcing bars.

3 4 Whether manually using the hand lance or the Magnet Lizard, even multi-layer paints and antifouling coatings are no challenge.











**PRESSURE
KiNG**

ECOMASTER LARGE UNIT-SERIES

Powerful systems for high requirements.

With the highest level of reliability and an equally large range of services, WOMA combustion- and large electrical units are suitable for the most demanding tasks and applications.

WOMA large units are characterized by their flexibility and robustness. The modular design allows a fast and flexible use for all tasks in mobile and stationary high-pressure water applications.

The following unit versions are available:

›Modell Classic:

the basic unit, robust and easy to use

Designed for the operation with a Dump Gun or with a manual overflow valve for mechanic water tools.

›Modell Advanced:

the control with that certain extra

Fitted with a pneumatic overflow valve. Suitable for the operation of electronic water tools and offering the highest level of safety.

›Modell Expert:

the expert solution for the highest demands

Equipped with pneumatic overflow valve and automatic pressure-rpm regulation. Suitable for the operation of electronic water tools. Optional multi-user solutions can be integrated.

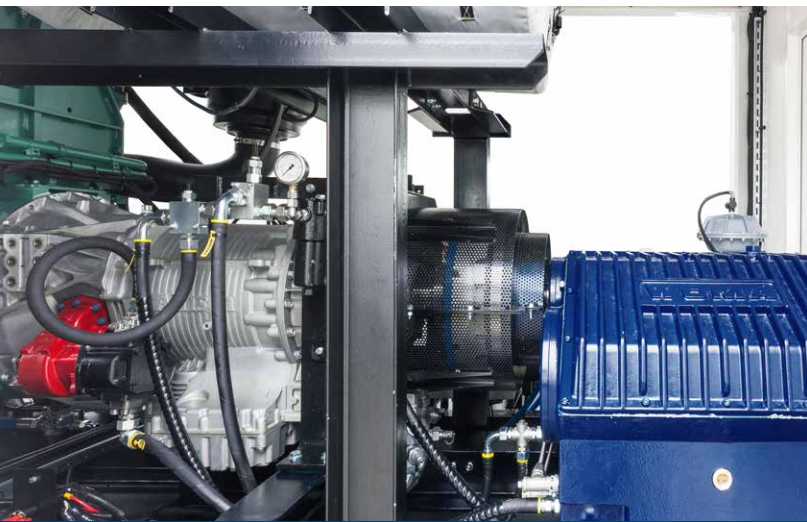
Additional and freely selectable options for all versions:

- Container housing
- Sound insulation
- EXI control





NOW FULLY AUTOMATED



ECOMASTER ZWG

Powerful, versatile and efficient in every situation.

The EcoMaster ZWG is controlled by an integrated intermediate gearbox in a power range from 50 to 500 kW. It covers the full range of high-pressure applications in the industry while optimizing fuel consumption during the operation.

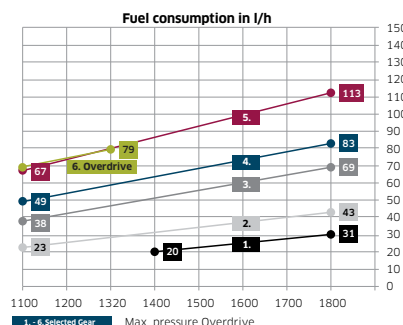
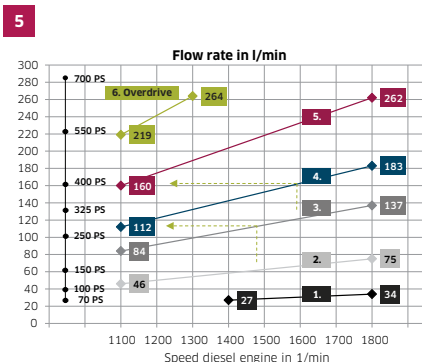
Advantages at a glance:

- Reduction of fuel consumption and reduction of CO2 emissions with the right engine speed for the application.
- The power range from 50 to 500 kW can be regulated via the integrated, multi-stage intermediate gear.
- With six available gears, the user always has the optimal pressure-liter combination at his disposal.
- Capacity and fuel consumption are constantly readable, with full control over the operating costs occurred.
- In automatic mode, gear changes take place during operation and without significant changes in the recoil forces.
- With the additional available overdrive, the engine is in the optimal consumption range with maximum output at the same time. This provides the full liter capacity of the machine at comparably low fuel consumption.
- Due to the speed reduction, the noise emission is significantly reduced.
- One device for changing applications:
 - › High-pressure gun work between 27 and 34 l/min
 - › Pipe cleaning applications between 84 and 183 l/min
 - › Tank cleaning applications from 112 to 264 l/min



Technical Data

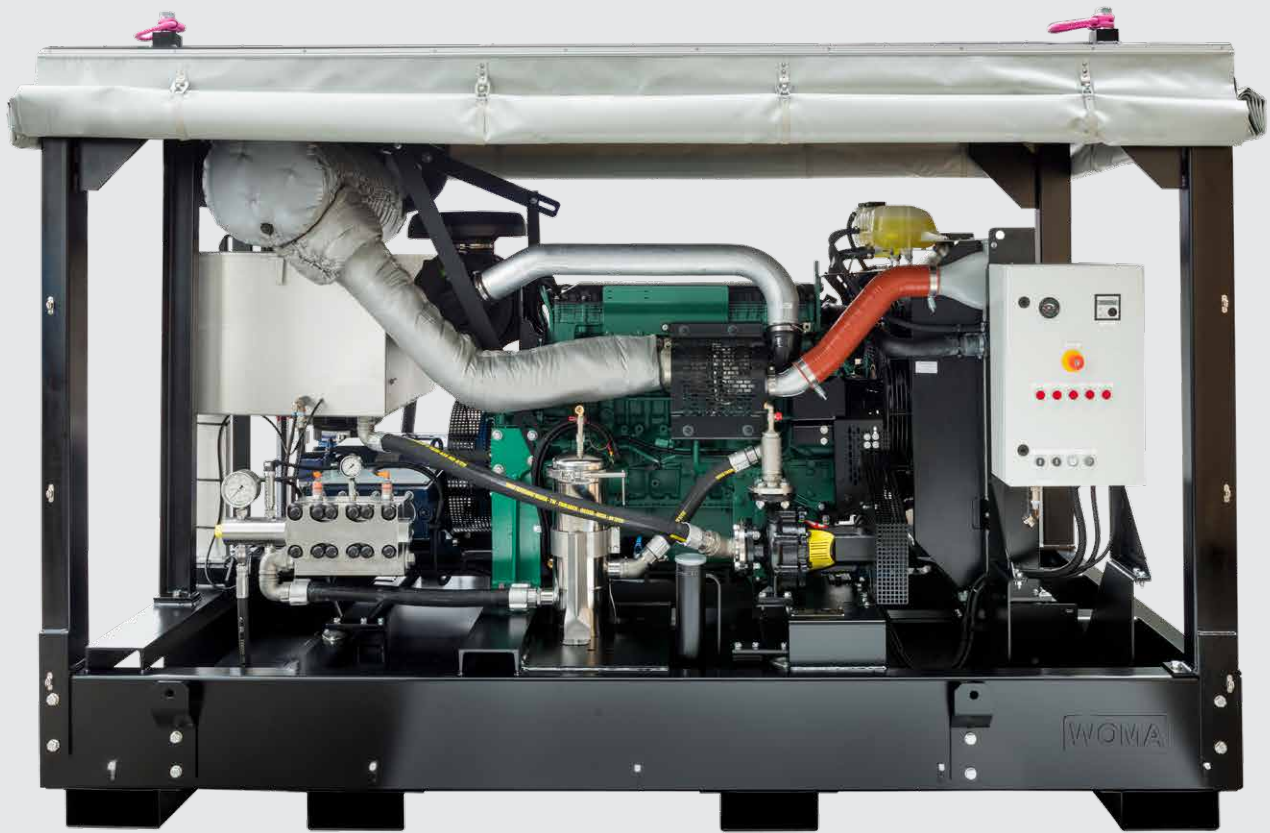
Unit type	550Z	700Z
Max. pressure in bar	850 - 1,500	750 - 1,500
Volume flow in l/min	25 - 259	27 - 264



Equipped for the diverse industrial cleaning routine.

A selection of the numerous application possibilities of the EcoMaster ZWG series:

- 1** Heat exchanger cleaning
- 2 3** Manual and automated parts cleaning
- 4** Tank cleaning
- 5** **Volume flow and fuel consumption**
Depending on the shifted gear at 1,000 bar using the example of WOMA EcoMaster D 700Z ZWG



ECOMASTER CLASSIC

Simply to use, simply robust, simply efficient.

The EcoMaster Classic are designed for the usage in rough conditions. They persuade with their compact, robust and low-maintenance construction and simple operation. This makes the high-pressure units versatile and flexible, even in extreme climatic regions or under difficult environmental conditions.

Advantages at a glance:

- All devices are fitted with robust, low maintenance and strong performance WOMA high-pressure pumps.
- The compact design with stable frame construction or crash frames enables easy usage in difficult areas.
- Equipped with crane hooks for easy transport, the WOMA EcoMaster Classic is also optionally available as a trailer construction.
- The EcoMaster Classic aggregates are particularly suitable for heavy soiling and caking in the industry, as e.g. commonly found in heat exchangers, meshes, filters and pipes.
- The EcoMaster Classic offers the optimal equipment for the refurbishment and removal of concrete or coating, as well as for cleaning.
- The large supply tank also ensures a calm water cycle in areas with limited supply of fresh water.
- Low operational costs due to high service life, minimal maintenance costs and simple servicing.

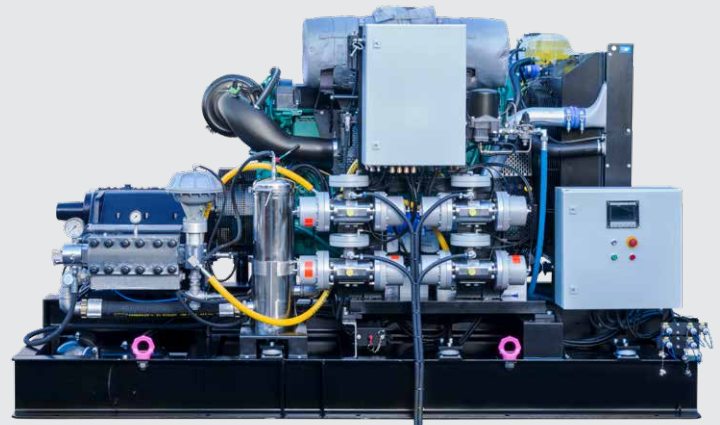
- 1** The EcoMaster D 250M Classic, with an operational pressure of up to 3,000 bar, offers the necessary performance for the removal of concrete and coating.
- 2** The EcoMaster D 150Z Classic is ideal for cleaning the exterior of tanks and removing coatings.
- 3** With a volume flow of up to 72 l/min, the EcoMaster D 1502 Classic is the optimal system for internal tank cleaning combined with the WOMA TankMaster cleaning heads.



Technical Data

Unit type	EcoMaster D 250M Classic	EcoMaster D 250M Classic	EcoMaster D 190Z Classic	EcoMaster D 150Z Classic	EcoMaster D 1502 Classic	EcoMaster D 2502 Classic
Max. pressure in bar	2,800	3,000	1,500	1,500	750	750
Max. volume flow in l/min	25	21	50	36	68	94
Weight in kg	2,500	2,500	2,500	2,500	2,500	2,500
Measures in mm (L x W x H)	2,880 x 1,510 x 1,820		2,880 x 1,510 x 1,820		2,880 x 1,510 x 1,820	

Unit type	EcoMaster D 250 Z Classic		EcoMaster D 2502 Classic	
Max. pressure in bar	1,500	1,000	720	400
Max. volume flow in l/min	60	96	133	219
Weight in kg	3,425	3,425	3,425	3,425
Measures in mm (L x W x H)	3,200 x 1,720 x 2,200	3,200 x 1,720 x 2,200	3,200 x 1,720 x 2,200	3,200 x 1,720 x 2,200



INDIVIDUAL SYSTEMS

According to your wishes and requirements.

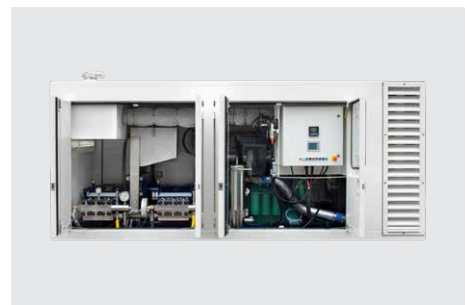
Besides the standard units, we design and produce individual high-pressure water jet devices according to customer requirements. The configuration is flexible depending on the requirements. Whether it is mobile or stationary, with diesel engine or electric motor – our experts find the best solution even for complex applications or challenging working conditions.

Advantages at a glance:

- The system design is always modular and can be either stationary as a Skid Unit respectively with container housing, or can be mobile as a trailer, as a truck installation or even as a flat wagon.
- All pressure stages and volume flows within the WOMA portfolio are available – with up to 4,000 bar, and approximately 1,700 l/min.
- Drive via powerful, efficient diesel engines or alternatively with electric drive for stationary operation.
- Multi-consumer valves enable pressure surge-free, safe working with several consumers with one device.
- Integration of the machine control into existing control systems is possible without any problems.
- With WOMA's unique Twin-Jet solution, two high-pressure pumps can be operated independently from each other with one drive. Thus, the system offers two workplaces with water tools in one unit.

Examples of further options:

- Container housing
- Flat wagon or trailer solution
- EXI control
- Highly efficient pressure control by frequency converter
- Different sizes of diesel and water tanks
- Individual color design
- and many more...



Whether mobile or stationary unit, with or without container housing: a flexible unit configuration can be made according to your wishes and requirements.



UNIT CONTROLLERS

Clear and intuitive.

The intuitive WOMA unit controllers for mobile applications are available in two versions with 4.3" or 7" display. With integrated SPS and CAN master capability, this is the perfect solution for high-pressure applications that require an innovative control and visualization system

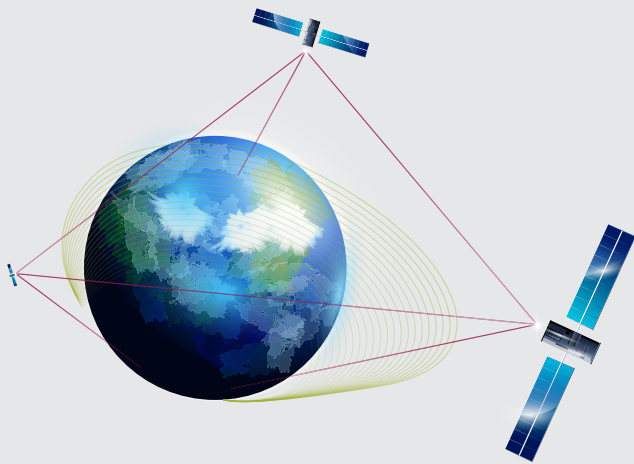
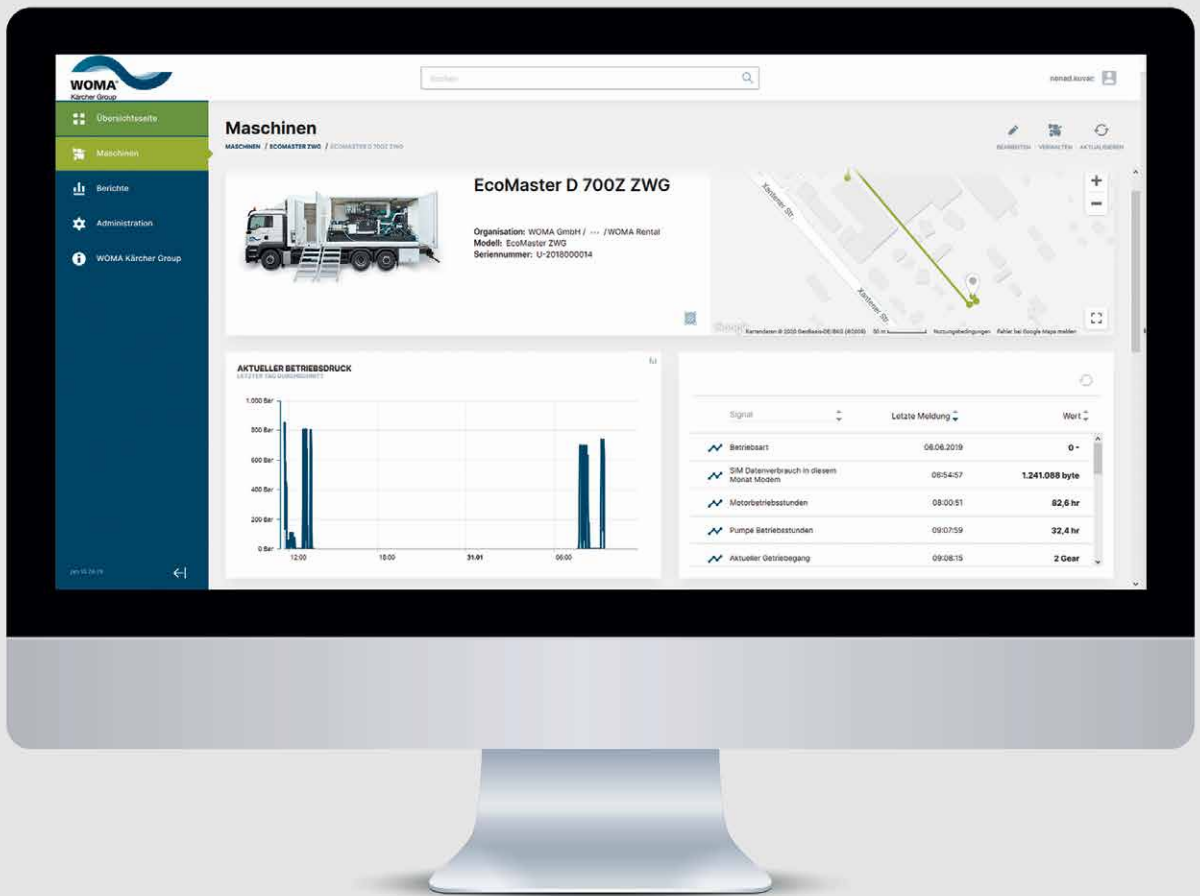


Advantages at a glance:

- Setting the desired operating parameters directly on the display.
- Display of all relevant pump, motor and gearbox data directly on the display.
- Display of incidents of the pump, the engine and the automatic transmission directly on the display.
- Collection of all incidents and events in a log file.
- USB interface for software updates and export of the log file.
- Integrated RFID system with three authorization levels.
- Operation via integrated buttons and a jog dial, for easy handling with gloves.
- Decentralized I/O modules for the acquisition of sensor data and control of actuators.
- Controller integrated in the display, additional SPS is not needed.
- Shock and vibration resistant, protection class IP66.
- 32 different languages included.
- Pre-equipped for the WOMA telematics-system.
- Expert devices optionally also adaptable for multi-consumer operation.

Control variants and functions

Unit type	Classic		Advanced	Expert
Unloader valve	-	Manual overflow valve	Pneumatic overflow valve	Pneumatic overflow valve or 2/2W-Bypass valve
Pressure regulation/-control	Pressure regulation via nozzle	Manual pressure regulation on OV	Manual pressure regulation via PN-Hand control	Automatic pressure-speed-control
Speed control/-regulation	Manual speed control			Automatic pressure-speed-control
Display	4.3"			4.3" (5 - 8l units) 7" (13 - 16l units)
Water tools	Foot valve (DG) or Dump-Gun	Water tools with valve	Water tools with electrical switching contact	
Modes	Dump-Gun-mode	Manual mode	Automatic mode Large consumer operation Small consumer operation	



TELEMATICS SOLUTION

Worldwide availability with maximum data security.

With the WOMA telematics-system, machine data are always in view: at any time, at any place. Full control with maximum data security. The WOMA telematics-system collects, transmits and evaluates the machine and operating data of WOMA high-pressure equipment in detail.

Via the secure WOMA Telematics DataPortal, users have an overview of all important data about machines and activities at any time and from any place via a dashboard. Planning and control with maximum data security has never been easier.

Advantages at a glance:

- Maximum data security, TPM security chip, TLS1.2 encryption according to EU and US regulations
- Multiband 4G LTE modem for worldwide use
- Real time positioning via GPS
- Access to machine and operating data of your WOMA high-pressure unit
- Web-based fleet management
- Remote diagnostics - also via WOMA Service
- API Interface of the DataPortal
- For temperature ranges from -40 °C to +80 °C
- Integrated eSIM card
- Made in Germany
- Reduced downtimes through optimal maintenance preparation

WOMA Telematics DataPortal

With WOMA's Telematics DataPortal all machines can be managed online and the entire telemetry data can be visualized. From the transmitted data a multitude of useful information is generated. With the help of the latest Big-Data technologies, detailed reports can be created. Whether current machine status or historical data history - all recorded data can be accessed at any time via desktop PC, tablet or smartphone.

The collected data of the new WOMA telematics system provide all useful information for a solid planning basis for operations, maintenance and investments - for more efficiency and success.

- Consumption values
- Creation of cleaning profiles
- Cleaning efficiency
- Annual planning
- Service planning
- Error memory and operating errors
- Investment planning
- Predictive Maintenance
- Preventive Maintenance

High-pressure pump:

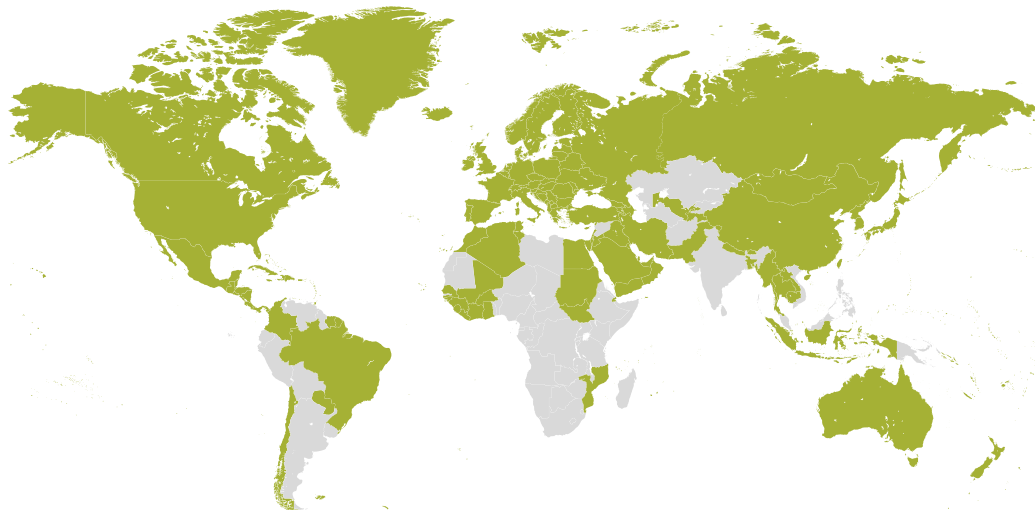
- Operating hours
- Actual pressure (operating pressure)
- Water pressure
- Filter differential pressure
- Oil temperature

Transmission:

- Current transmission gear

Engine:

- Engine Operating hours
- Engine speed
- Engine load
- Total fuel consumption
- Current fuel consumption



■ WOMA Telematics is available in these countries.

PRESSURE KiNG

STEAMERS

THE WORLD BEST GREEN SOLUTION
OPTIMA STEAMER



www.sjecorp.com



WHY STEAM?

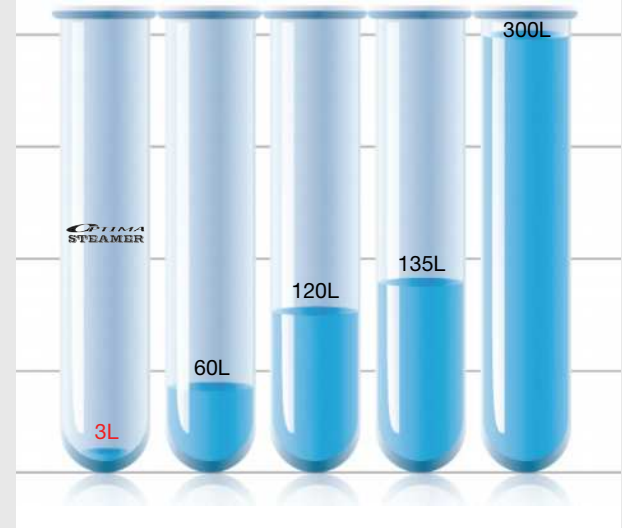
CLEAN ANYWHERE (Unrestricted Mobility)



The Optima Steamer allows workers to take their business on the road. This convenient all-in-one system allows the customer to wash and detail anywhere and everywhere with little to no wastewater. car with 1~2 gallon of water. This convenient all-in-one system allows the customer to wash any vehicles such as cars, airplanes, boats and camping trailers anywhere and everywhere with little to no wastewater.

SAVE WATER, SAVE TIME, SAVE MONEY

Average water consumption by Car Wash Type



The Optima Steamer's patented boiler design super heats water into what we in the industry call "Dry Vapor Steam". Dry Vapor Steam will powerfully clean while using a tiny fraction of water compared to conventional cleaning methods-such as pressure washing. Using less water and doing jobs quicker means you'll save money. Steam will allow you to offer your customers more services and for a premium rate. And because it can be used anywhere, you can offer services that you only thought possible if you installed drainage and reclamation systems.

CLEAN EXTREME



Steam sanitizes and disinfects while it cleans. Chemicals cover up odors and mask stains. Steam penetrates pores, fibers and microscopic surface abrasions. When you use the Optima Steamer to clean, you're cleaning extreme.

COVID-19

Steam Temperature from Gun Nozzle



WHO recognizes viral inactivation by heat. Temperature of 80°C (176°F) or higher on contact surfaces is known to inactivate viruses. Within 10cm, the steam of Optima Steamer carries the temperatures which are lethal against viruses.

TESTIMONIALS



1. Josh V. / Detail Green USA / California, USA

“The Optima Steamer is amazing. I’ve been detailing cars as a mobile service for about 6 years now and always hated dealing with water run-off polluting the ocean in my home town of San Diego, not to mention the city restrictions on water usage and the hassle it was to lay down a wash mat and reclaim all of my water.”

2. Mohammed Al-Showair / Advanced Cleaning Co. / Saudi Arabia

“For the last 3 years, hundreds of Middle Eastern customers have been very much satisfied with Optima Steamer so that, when they need to buy steam cleaning machine again, they always have been royal to Optima Steamer. The reason why customers choose Optima Steamer is that they value the high performance and premium quality of the Optima Steamer the most.”



3. Piyush & Parag Khokle / Steam Buddy / Chhattisgarh, India

“After using Optima Steamer, my traditional car wash business has changed to a smart and professional car wash business. With Optima Steamer, I can also provide door step service. My workers look neat and clean. My customers are now more satisfied with the internal hygiene of the car. Thank you Optima!”

4. Eun-sung Jeong / ACCEL Steam Wash / Bangkok, Thailand

features and amazing scalability of Optima Steamer. Not only Optima Steamer shows us great efficacy in car washing, but also in sterilization, cleaning of various buildings, factories, ships, containers and construction, etc. We are very confident that the Optima Steamer will be widely used in various industries and we will expand our business with Optima Steamer in Thailand.”



5. Gabor Varga / Vapor Sobre Ruedas, S.L / Malaga, Spain

“We saw a lot of potential in Optima Steamer so we decided to use the machine for other cleaning tasks such as domestic and commercial steam cleaning. The clients are highly satisfied with cleaning result as they go to bed with a peace of mind that their houses and cars are not just being cleaned but sterilized”

OPTIMA STEAMER XD/XE

The most user-friendly Optima Steamer™



Popular Applications:

Optima XD

- Mobile cleaning business
- Exterior & interior vehicle cleaning and sanitization
- Surface decal and film removal
- Sculpture and monument cleaning
- Disaster recovery

Optima XE

- Commercial cleaning
- Auto repair and body shops
- Animal holding facility sanitation
- Nursing homes and daycare sanitization
- Cleanroom maintenance



Features of the Optima Steamer™ XD/XE



User-friendly LCD display

LCD display helps operators to see the operating status, error message and maintenance alerts real time.



Tank level windows

In addition to low level sensors, water and fuel tanks have windows for physical level visibility.



Easy maintenance

No-tool necessary pull-up top cover provides easy access to internal parts. Minimal disassembly and reassembly time for any maintenance or repair.



Emergency stop button

In addition to multiple stage safety features, a single, easy-to-spot stop button enhances safety of employees and the machine in case of emergency.

Product Specifications

Model	XD	XE 12K	XE 18K	XE 27K
Heating Source	Diesel burner	Electric Heaters		
Voltage Options	100-240V	3-phase, 208~600V		3-phase 380~600V
Power Consumption	0.3kW	12.2KW	18.2kW	27.2kW
Steam Pressure	8.5 bar (124 psi) [Max. 9.5 bar (138 psi)]			
Spraying Temperature	135°C (275°F)	135°C (275°F)		
Boiler Temperature	178°C (352°F)	174°C (345°F)		
Flow Rate	300~1,200cc/min (0.08~0.31gal/min)	300~600cc/min (0.08~0.16gal/min)	300~900cc/min (0.08~0.24gal/min)	300~1,200cc/min (0.08~0.31gal/min)
Preheating Time	3 minutes	8~10 minutes	6~7 minutes	
Fuel Consumption	Avg. 1~2L/hr (0.26~0.5 gal/hr) [Max. 4.1 L/hr (1.1gal/hr)]	—		
Fuel Tank Capacity	36L (9.5gal)	—		
Water Tank Capacity	36L (9.5gal)	72L (19gal)		
Boiler Material	304 Stainless Steel			
Pipes Materials	Stainless Steel, Brass, Copper, Teflon			
Body, Frame Materials	Polypropylene, Polyethylene, Steel (SS400)			
Net Weight	87kg (196lbs)	78kg (171lbs)		87kg (196lbs)
Unit Dimensions	66 x 100 x H89cm (25.9 x 39.3 x H35")			
Available Color(s)	Red			
# of Hoses and Guns	2 sets	1 set	2 sets	

Accessories

Included Items:



Standard Steam Gun
w/ 3.5mm Nozzle



Quick-Connect
Steam Gun



Steam Hose
10m (33')

XE 12K only:



Standard Steam Gun
w/ 3.5mm Nozzle



Steam Hose
10m (33')

MOBILE CAR WASH



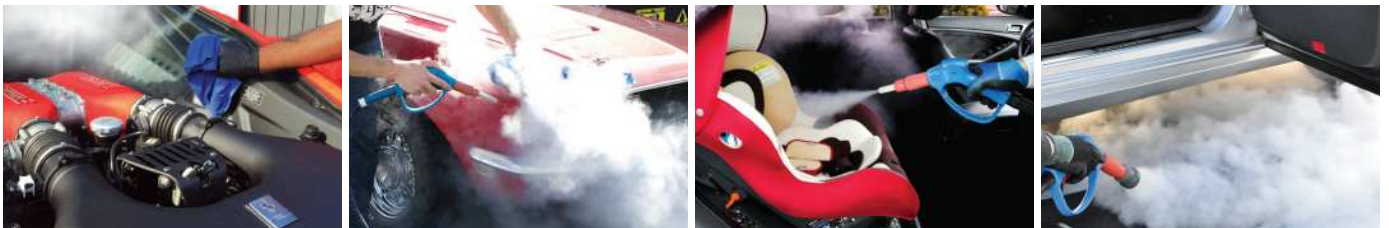
Make Your Car Gleam with Steam!

The steam generated by the Optima Steamer is hot enough to lift off any grease and soilage. It produces enough pressure to break down dirt, caked-on dust and mud efficiently.

Comprehensive Car Cleaning Services at Your Doorstep!

It is becoming a global trend to get your car washed by on-demand, Smart App-based mobile car cleaning services. Once you make an on-line booking via Mobile App., mobile van will come to your location and take care of your car while you go about your day.

AUTO DETAILING & REPAIR



Complete & Simplified Operation

Steam is now a vital part of the automotive repair industry. The Optima Steamer leaves no residue and dries almost instantly, avoiding the hassles of clean-up and wastewater runoff.

The Optima Steamer also speeds up the cleaning process by easily removing compound in the tightest cracks and crevices.

A Clean Automotive Facility Leaves a Good Impression on Customers

The Optima Steamer not only cleans cars, but also keeps your shops in spotless condition. Remove grease residue, oil stains, and other blemishes from your equipment to maintain your shop's presentation.

MARINE



Safely Remove Dirt and Mold

Fiberglass material can be easily stained and damaged with traditional cleaning chemicals, whereas the light pressure of steam safely removes dirt and odours from all surfaces. It will sterilizes a boat's interior, killing bacteria, germs and other nasties from soft fabrics and upholstery.

The Tough Job Expert

Steam supports the regular maintenance of the hull by loosening barnacles and killing mould while preserving the wax on surfaces so your hard labour won't be lost. Using steam to maintain your boat prevents future complications and protects its long-term re-sale value.

FOOD-GRADE ELECTRIC STEAMER

Optima SE II Product Features



Optima
SE II

	SE II		
	18K	27K	42K
Operating Voltage	3-Phase 200V ~ 600V		3-Phase 380V ~ 600V
Operating Pressure	8.5 bar		
Max Pressure	9.0 bar		
Max. Temp. at Gun Tip	120 °C		
Boiler Temp.	174 °C		
Flow Rate	300 ~ 1,120 cc/min	300 ~ 1,690 cc/min	300 ~ 1,820 cc/min
Preheating Time	8 minutes	9 minutes	
Electrical Power	18 kW	27 kW	42 kW
Water Tank Capacity	38 L		
Boiler Type	STS 304, Immersion Electric Heater		
Net Weights	103 kg	110 kg	119 kg
Dimensions [LxWxH]	910 x 560 x 870mm		
Included Hoses/Guns	2 hoses, 2 guns		

FOOD PROCESSING



Total Sanitation

Most of pathogens are known to be eliminated at 78°C. The Optima Steamer is constantly able to produce hot dry steam at a pressure and temperature of 8.5–9.5 bar and 100–135°C at the nozzle tip, ensuring total sanitation of unwanted micro-organisms.



Clean and Sanitize Hard-To-Reach Areas

If your preparation area is older with scratches, dents, visible cracks or rusted and pitted areas allowing food particles trapped and bacteria to multiply, it may be impossible to clean using the method described in your SSOP. Steam cleaning might get the area “clean enough”



WINERY & BREWERY



Thorough Sanitation via Dry Steam

The Optima Steamer is ideal for the wine industry, making cleaning operations throughout the facility simple and more effective. Dry vapor steam travels much faster than liquid water and can reach deep into harborage areas and the wood pores of barrels. This allows for thorough sanitation, killing Brett and Zygo as well as countless other microorganisms.

Barrel Cleaning

Nooks and crannies are the favorite places for bacteria to hide in barrels, but being in gaseous form, steam will effectively penetrate the cellulous structure of the wood. Also with the high temperature, tartrate removal is considerably easier, taking far less time and using virtually no water.

EXTERIOR & HARD SURFACE CLEANING



Unsurpassed Standards of Exterior Surface Cleaning

Graffiti, unwanted tagging and marking on the street posts, bulletin boards and building walls tend to spread like a virus. It is a big job to remove layers of layers of paints and taggings by the conventional cleaning method which is extremely laborious, difficult and also very inefficient, usually leaving the surface wet and damaged.

Hassle-Free Cleaning System

The Optima Steamer removes graffiti and taggings using a fraction of water than conventional methods without chemicals and intensive scrubbing. Steam heat and pressure break them up for easy removal and an overall quicker cleaning process without damaging the original material.



HVAC

Why Clean Coils?

Cooling coils trap dust, soil, grime, and other troublesome deposits that reduce the heat transfer efficiency of HVAC units. Although a coil may look clean on the surface, the majority of the debris is lodged within the coil. What most people see is dirt accumulation on the fins that are designed to protect the coil. The coil which we usually do not see is located inside behind the fins.

Save Energy and Money

A sandwich wrapping thickness of debris on AC coils can increase energy consumption over 20% which requires more electricity and in turn, this will result in higher utility bills.

Removal of built-up dirt and grime from cooling coils with Optima Steamer improves system efficiency, reduces electricity consumption, and ensures a long operating life of the unit.



SOLAR PANEL



Why Clean Solar Panels?

Solar panels are designed to absorb the sun's rays as a source of energy for generating electricity or heating. Due to the upwards angle of solar panels, they are more prone to bird droppings, dust and dirt that does not wash off with just rain. This build-up of dust, dirt, pollen, bird droppings and other debris reduce the amount of light hitting the panels and adversely affect optimal Solar Panel Efficiency.

Cleaning Solar Panels That Had Been in Operation for 15 Months Doubled Their Output of Electricity.

Rain is not a satisfying way of cleaning solar panels. Solar panels that were cleaned professionally had a 12% higher output of electricity compared to those cleaned by rain. This literally means that they will generate 15-25% less electricity and this easily adds a couple of years extra on the payback time.



RESIDENTIAL CLEANING

A Professional Cleaning Solution to Help Prevent Harmful Bacteria

Bacteria are everywhere, but some areas are more likely to breed harmful bacteria. Dust mites, allergens and bacteria are all seeking asylum in your mattresses and carpets. As you clock in your 8 hours of sleep, you are also breathing in allergens that can cause asthma. Optima Steamer specializes in deep cleaning, sanitizing and deodorizing with chemical-free approach, leaving no water residue behind.

Better for Your Family Members

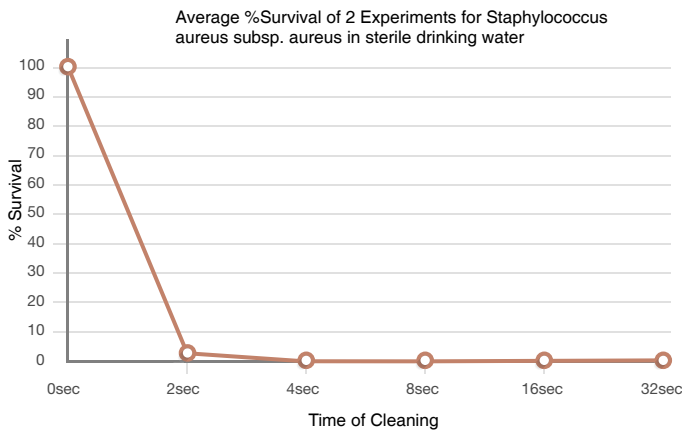
Cleaning with steam protects you and your family. Unlike detergents, the condensed steam leaves no potentially allergy-inducing residues behind on the surfaces it cleans. This is particularly important for small children who like to put things in their mouths. Accidents caused by using the wrong cleaning agent, skin irritation or other negative health effects are no longer an issue thanks to steam.





MEDICAL

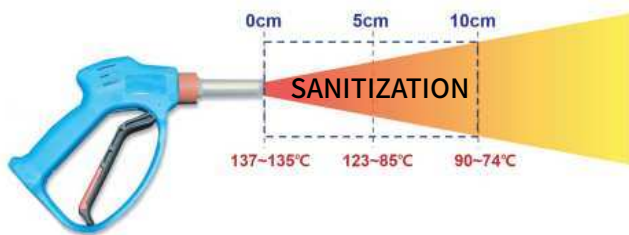
Reduction in the Microbial Load on High-Touch Surfaces in Hospital Rooms by Treatment with a Portable Dry Steam Vapor



the Optima Steamer reduced bacterial levels by 100% and reduced pathogen levels on most surfaces to below the detection limit after 4 seconds of steam spraying.

The Optima Steamer provides a means to reduce levels of microorganisms on hospital surfaces without the drawbacks associated with chemicals, and may decrease the risk of cross-contamination.

Coronavirus Disease 2019 (COVID-19)



Within 10cm, the steam of Optima Steamer carries the temperatures which are lethal against viruses. Provision of safe water, sanitation and waste management and hygienic conditions is essential for preventing and for protecting human health during all infectious disease outbreaks, including coronavirus disease 2019 (COVID-19)



URBAN WEEDING



Environmental Alternative for Urban Weeding

Currently, weeding in urban areas is usually carried out by responsible authorities/organizations using a variety of harmful chemicals. These chemicals usually corrode the surrounding area and ultimately harm the environment. The Optima Steamer generates pressurized high temperature steam which bursts the cells of the plants and sterilizes the soil. This leads to restriction and stunting of new growth. This is achieved without harm to the surrounding vegetation by using a directional spray gun. Optima Steamer is also able to disinfect general urban areas.



Picture taken immediately after the Optima Treatment



Picture taken **ONE DAY LATER**



Picture taken **THREE DAYS LATER**

ACCESSORIES – OPTIMA STEAMER

No. A70015



Steam Gun K26

No. A70024



Power Steam Gun RL37

No. A70019



Power Steam Gun RL22

No. A70274



Steam Gun K26 with Quick Couper

No. 85-50047



Steam Gun K26 with quick coupler, KC35

No. 85-50056



Floor Spinner with Quick Plug, KPS45

No. 85-50038



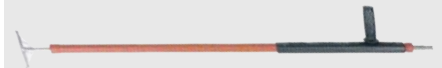
Weed Control, Roller

No. 85-53006



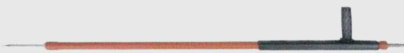
Floor brush, KPS45

No. 85-50037



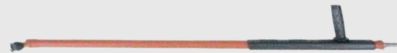
Weed Control, Flat

No. 85-50036



Weed Control, Spear

No. 85-50035



Weed Control, Brush

No. 85-50077/85-50078/85-50064/85-50063



Lance with Brush Holder + Quick Plug, KPS45 L250/400/700/1000

No. 85-50079/85-50080/85-50060/85-50061



Steam Nozzle + Quick Plug, KPS45 L300/500/600/1000

No. A70947



Steam Gun with Combination Brush Kit

No. A70948



Steam Gun with Combination Scrubber Kit

No. A70026



Steam Nozzle 3.5 + Quick Plug

No. A71607



Silence Steam Nozzle + Quick Plug

No. A71608



Turbo Steam Nozzle with Quick Plug

ACCESSORIES – OPTIMA STEAMER



No. A70025



Flat Fan Nozzle 50 + Quick Plug

No. A70247



Flat Nozzle 50 + Quick Plug

No. 85-50212



Flat nozzle L.100 +SCP30

No. 85-50179



Steam Extractor Hand Tool V.2

No. 85-50088



Heat-Resistant Vacuum Hose D.38, 3m

No. A70030



Steam Hose

No. A70039



Power Steam Hose

No. 85-50051



Spray Bottle 350ml with Quick Plug

No. 85-50135



Barrel Wand with Bimetal Thermometer 4V.

No. 85-50094



Omega Softener kit

No. 70284



Round Brush D.100 Nylon

No. 71391



Brush with Polyester Bristles 60mm

No. 71392



Small Brush with Polyester Bristles 30mm

No. 71393



Small Brush with Steel Bristles 30mm

No. 71394



Plastic Scraper 50mm

No. 85-50091



Mop wand with squeegee

No. 85-50201/85-50180/85-50200



Conveyor Cleaning Tool (Pneumatic)
24 inch / 39 inch / 48 inch

Scan here to check More Accessories

